

**PRODUCT INFORMATION**

<b>Common Name</b>	AMG888, U3-1287
<b>Conjugate</b>	Unconjugated
<b>Synonyms</b>	HER3;ERBB3
<b>Applications</b>	ELISA; Flow Cyt
<b>Endotoxin</b>	Less than 1.0 EU/ $\mu$ g by the LAL method. For <1 EU/mg requirements, please contact us for customization.
<b>Recommended Dilutions</b>	ELISA 1:5000-10000; Flow Cyt 1:100
<b>Formulation &amp; Reconstitution</b>	Lyophilized from sterile PBS, pH 7.4. Normally 5% - 8% trehalose is added as protectants before lyophilization. Please see Certificate of Analysis for specific instructions of reconstitution.
<b>Host Species</b>	Homo sapiens
<b>IgG type</b>	Human IgG1 - kappa
<b>Reactivity</b>	Human
<b>Target</b>	HER3
<b>Uniprot ID</b>	P21860
<b>Description</b>	Anti-HER3 (patritumab biosimilar)mAb
<b>Delivery</b>	In Stock
<b>Storage&amp;Shipping</b>	Store at -20°C to -80°C for 12 months in lyophilized form. After reconstitution, if not intended for use within a month, aliquot and store at -80°C (Avoid repeated freezing and thawing). Lyophilized proteins are shipped at ambient temperature.
<b>Background</b>	Research grade biosimilar. Not for use in therapeutic or diagnostic procedures for humans or animals.
<b>Usage</b>	Research use only



## Anti-HER3 (patritumab biosimilar)mAb ELISA

0.2  $\mu$ g of HER3, His tagged protein per well

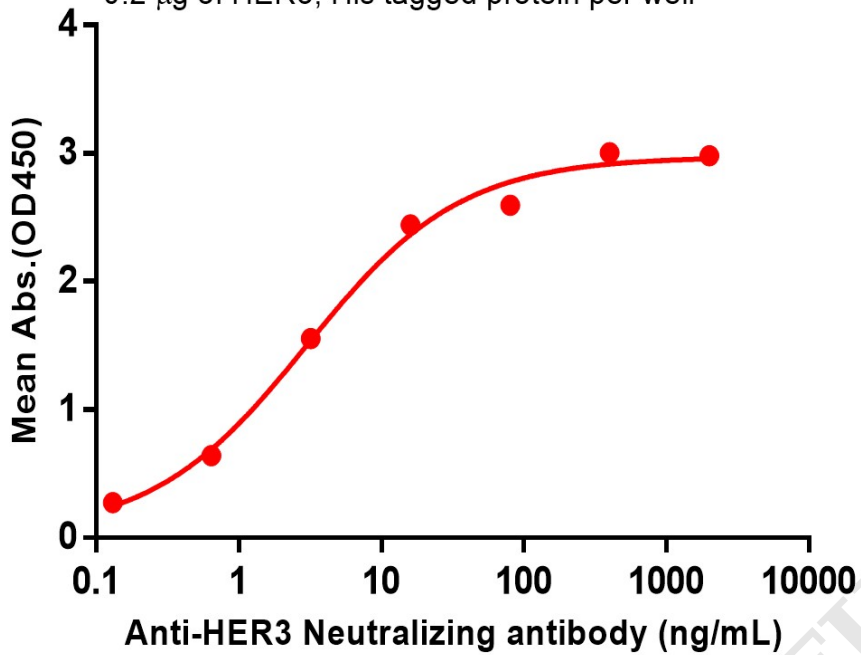


Figure 1. ELISA plate pre-coated by 2  $\mu$ g/ml (100  $\mu$ L/well) Human HER3 , His tagged protein (PME100088) can bind Anti-HER3 (patritumab biosimilar)mAb (BME100057) in a linear range of 3.2-16 ng/ml.

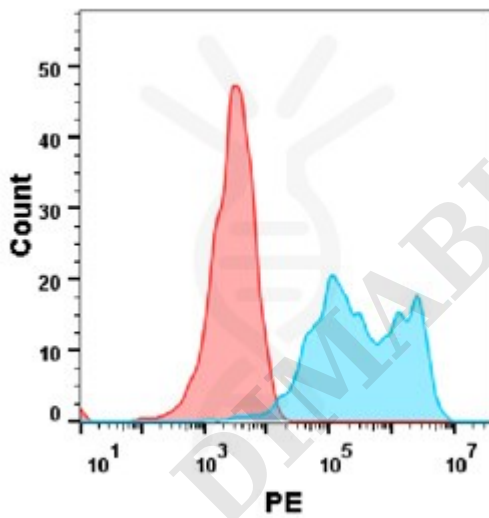


Figure 2. Flow cytometry analysis with Anti-HER3 mAb 1  $\mu$ g/ml (patritumab) on HEK293 cells transfected with human HER3 (Blue histogram) or HEK293 transfected with irrelevant protein (Red histogram).

