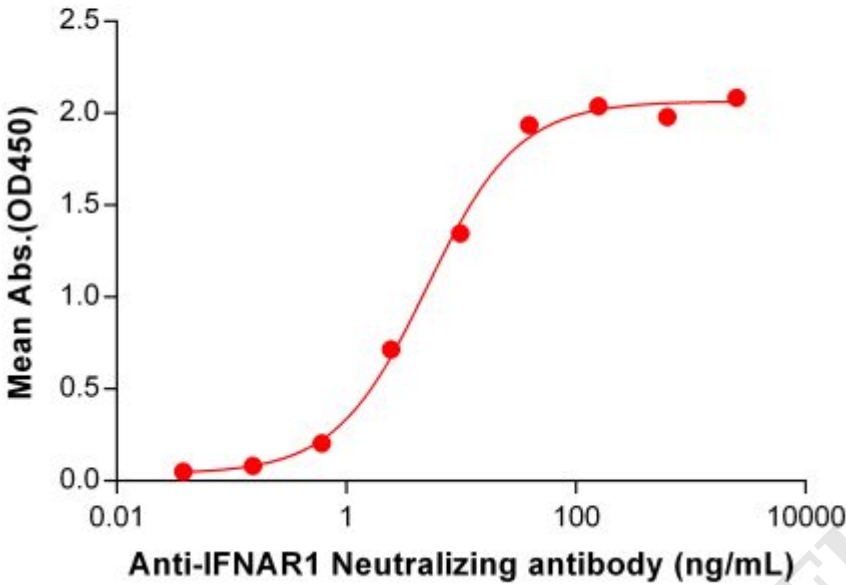


**PRODUCT INFORMATION**

<b>Common Name</b>	MDX-1333, MEDI-546, anifrolumab-fnia
<b>Synonyms</b>	IFN-R-1;CRF2-1;IFNAR
<b>Conjugate</b>	Unconjugated
<b>Applications</b>	ELISA; Flow Cyt
<b>Recommended Dilutions</b>	ELISA 1:5000-10000; Flow Cyt 1:100
<b>Formulation &amp; Reconstitution</b>	Lyophilized from sterile PBS, pH 7.4. Normally 5 % - 8% trehalose is added as protectants before lyophilization. Please see Certificate of Analysis for specific instructions of reconstitution.
<b>Host Species</b>	Homo sapiens
<b>IgG type</b>	Human IgG1 – kappa
<b>Reactivity</b>	Human
<b>Target</b>	IFNAR1
<b>Uniprot ID</b>	P17181
<b>Description</b>	Anti-IFNAR1(anifrolumab biosimilar) mAb
<b>Delivery</b>	In Stock
<b>Storage &amp; Shipping</b>	Store at -20°C to -80°C for 12 months in lyophilized form. After reconstitution, if not intended for use within a month, aliquot and store at -80°C (Avoid repeated freezing and thawing). Lyophilized proteins are shipped at ambient temperature.
<b>Background</b>	Research grade biosimilar. Not for use in therapeutic or diagnostic procedures for humans or animals.
<b>Usage</b>	Research use only
<b>DIMA Disclaimer</b>	All DIMA recombinant antibodies are genuinely generated by DIMA Biotech. They are all under patent application. Any protein sequencing or reverse engineering attempt is prohibited. We are actively scrutinizing all patent application to ensure no IP infringement.

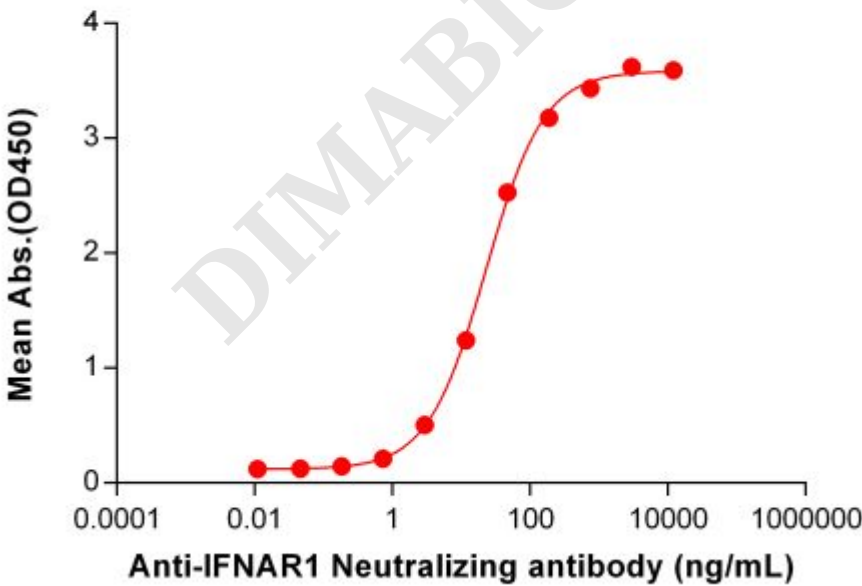


**Anti-IFNAR1 (anifrolumab biosimilar) mAb ELISA**  
0.1 µg of Human IFNAR1, His tagged protein per well



**Figure 1.** ELISA plate pre-coated by 1 µg/mL (100 µL/well) Human IFNAR1 Protein, His Tag ([getskuurl sku="PME100958"]) can bind Anti-IFNAR1 Neutralizing antibody (BME100117) in a linear range of 0.61–39.06 ng/mL.

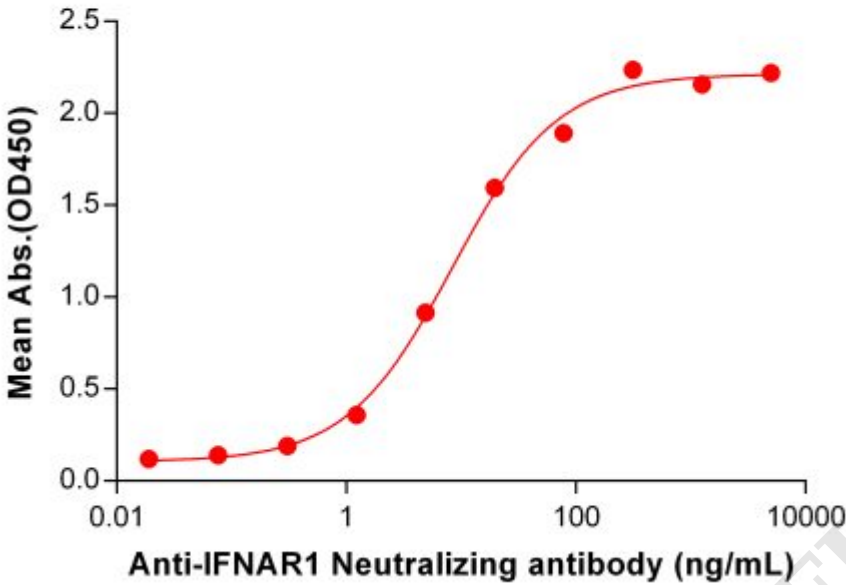
**Anti-IFNAR1 (anifrolumab biosimilar) mAb ELISA**  
0.2 µg of Human IFNAR1, hFc tagged protein per well



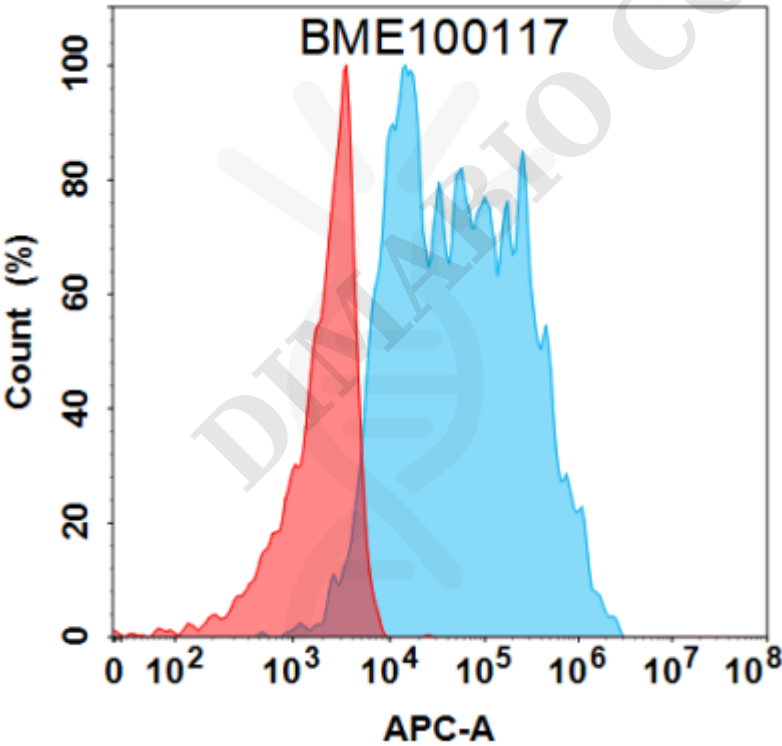
**Figure 2.** ELISA plate pre-coated by 2 µg/mL (100 µL/well) Human IFNAR1 Protein, hFc Tag (PME100773) can bind Anti-IFNAR1 Neutralizing antibody (BME100117) in a linear range of 0.73–187.50 ng/mL. In order to specifically detect BME100117, mouse anti-human Fab-specific antibody was used as detection antibody.



**Anti-IFNAR1 (anifrolumab biosimilar) mAb ELISA**  
0.2 µg of Human IFNAR1, mFc tagged protein per well



**Figure 3.** ELISA plate pre-coated by 2 µg/mL (100 µL/well) Human IFNAR1 Protein, mFc Tag ([getskuurl sku="PME100737"]) can bind Anti-IFNAR1 Neutralizing antibody (BME100117) in a linear range of 1.22-312.50 ng/mL.



**Figure 4.** Flow cytometry analysis with 1 µg/mL Anti-IFNAR1 (anifrolumab biosimilar) mAb (BME100117) on Expi293 cells transfected with Human IFNAR1 protein (Blue histogram) or Expi293 transfected with irrelevant protein (Red histogram).

