

PRODUCT INFORMATION

Clone ID	DMC422
Target	IGFBP7
Synonyms	IBP-7; TAF; IGFBP-rP1; MAC25 protein
Host Species	Rabbit
Description	Anti-IGFBP7 antibody(DMC422); IgG1 Chimeric mAb
Delivery	In Stock
Uniprot ID	Q16270
IgG type	Rabbit/Human Fc chimeric IgG1
Clonality	Monoclonal
Reactivity	Human
Applications	Flow Cyt
Recommended Dilutions	Flow Cyt 1:100
Purification	Purified from cell culture supernatant by affinity chromatography
Endotoxin	Less than 1.0 EU/μg by the LAL method. For <1 EU/mg requirements, please contact us for customization.
Formulation & Reconstitution	Lyophilized from sterile PBS, pH 7.4. Normally 5 % - 8% trehalose is added as protectants before lyophilization. Please see Certificate of Analysis for specific instructions of reconstitution.
Storage&Shipping	Store at -20°C to -80°C for 12 months in lyophilized form. After reconstitution, if not intended for use within a month, aliquot and store at -80°C (Avoid repeated freezing and thawing). Lyophilized proteins are shipped at ambient temperature.
Sterility	Products are supplied non-sterile. For cell culture applications, dilute in appropriate medium and sterile-filter (0.22 μm) prior to use.
Background	This gene encodes a member of the insulin-like growth factor (IGF)-binding protein (IGFBP) family. IGFBPs bind IGFs with high affinity; and regulate IGF availability in body fluids and tissues and modulate IGF binding to its receptors. This protein binds IGF-I and IGF-II with relatively low affinity; and belongs to a subfamily of low-affinity IGFBPs. It also stimulates prostacyclin production and cell adhesion. Alternatively spliced transcript variants encoding different isoforms have been described for this gene; and one variant has been associated with retinal arterial macroaneurysm (PMID:21835307).
Usage	Research use only
Conjugate	Unconjugated
DIMA Disclaimer	All DIMA recombinant antibodies are genuinely generated by DIMA Biotech. They are all under patent application. Any protein sequencing or reverse engineering attempt is prohibited. We are actively scr



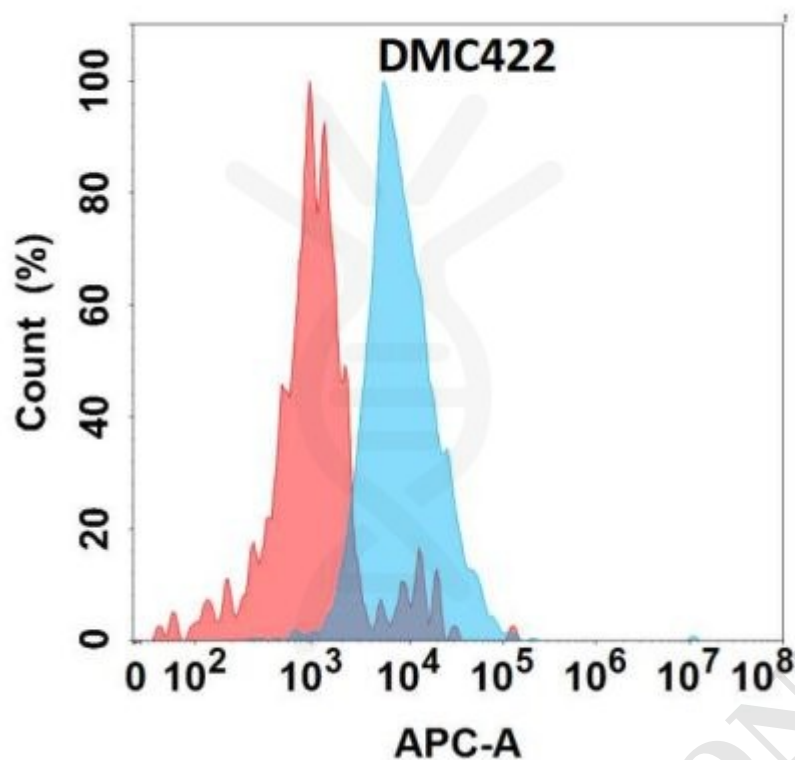


Figure 1. Flow cytometry analysis with Anti-IGFBP7 (DMC422) on HEK293 cells transfected with human IGFBP7 (Blue histogram) or HEK293 transfected with irrelevant protein (Red histogram).

