

PRODUCT INFORMATION

Clone ID	DMC271
Target	IL1B
Synonyms	IL-1; IL1-BETA; IL1F2
Host Species	Rabbit
Description	Anti-IL1B antibody(DMC271); IgG1 Chimeric mAb
Delivery	In Stock
Uniprot ID	P01584
IgG type	Rabbit/Human Fc chimeric IgG1
Clonality	Monoclonal
Reactivity	Human
Applications	Flow Cyt
Recommended Dilutions	Flow Cyt 1:100
Purification	Purified from cell culture supernatant by affinity chromatography
Endotoxin	Less than 1.0 EU/μg by the LAL method. For <1 EU/mg requirements, please contact us for customization.
Formulation & Reconstitution	Lyophilized from sterile PBS, pH 7.4. Normally 5 % - 8% trehalose is added as protectants before lyophilization. Please see Certificate of Analysis for specific instructions of reconstitution.
Storage&Shipping	Store at -20°C to -80°C for 12 months in lyophilized form. After reconstitution, if not intended for use within a month, aliquot and store at -80°C (Avoid repeated freezing and thawing). Lyophilized proteins are shipped at ambient temperature.
Background	The protein encoded by this gene is a member of the interleukin 1 cytokine family. This cytokine is produced by activated macrophages as a proprotein; which is proteolytically processed to its active form by caspase 1 (CASP1:ICE). This cytokine is an important mediator of the inflammatory response; and is involved in a variety of cellular activities; including cell proliferation; differentiation; and apoptosis. The induction of cyclooxygenase-2 (PTGS2:COX2) by this cytokine in the central nervous system (CNS) is found to contribute to inflammatory pain hypersensitivity. Similarly; IL-1B has been implicated in human osteoarthritis pathogenesis. Patients with severe Coronavirus Disease 2019 (COVID-19) present elevated levels of pro-inflammatory cytokines such as IL-1B in bronchial alveolar lavage fluid samples. The lung damage induced by the Severe acute respiratory syndrome coronavirus 2 (SARS-CoV-2) is to a large extent; a result of the inflammatory response promoted by cytokines such as IL-1B. This gene and eight other interleukin 1 family genes form a cytokine gene cluster on chromosome 2.
Usage	Research use only
Conjugate	Unconjugated



DIMA Disclaimer

All DIMA recombinant antibodies are genuinely generated by DIMA Biotech. They are all under patent application. Any protein sequencing or reverse engineering attempt is prohibited. We are actively scr

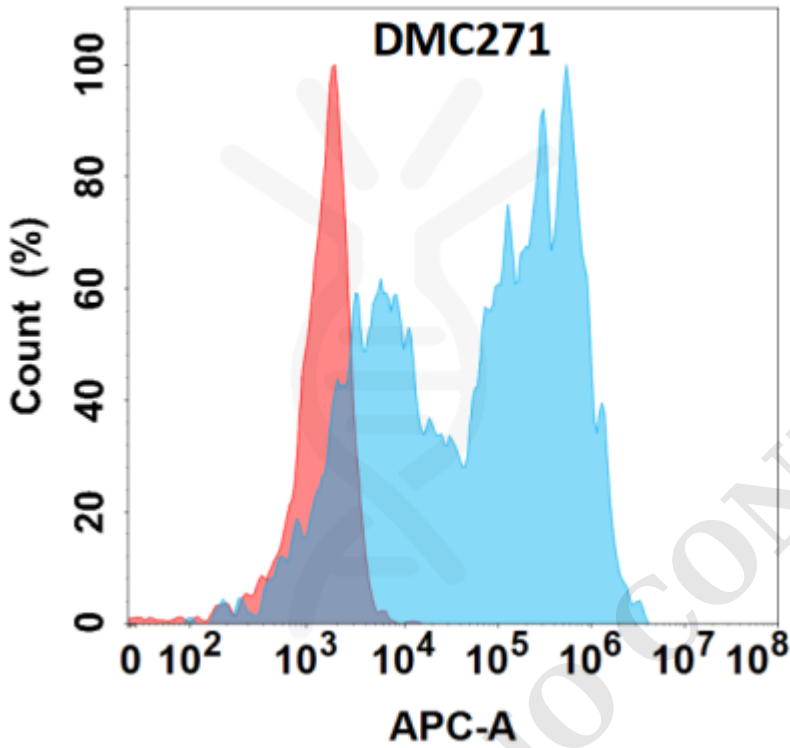


Figure 1. Flow cytometry analysis with Anti-IL1B (DMC271) on HEK293 cells transfected with human IL1B (Blue histogram) or HEK293 transfected with irrelevant protein (Red histogram).

