

PRODUCT INFORMATION

Common Name	PF-05230900,18E5
Conjugate	Unconjugated
Synonyms	NILR; IL-21 receptor; IL-21R; CD360
Applications	ELISA, Flow Cyt
Endotoxin	Less than 1.0 EU/ μ g by the LAL method. For <1 EU/mg requirements, please contact us for customization.
Recommended Dilutions	ELISA 1:5000-10000, Flow Cyt 1:100
Formulation & Reconstitution	Lyophilized from sterile PBS, pH 7.4. Normally 5% - 8% trehalose is added as protectants before lyophilization. Please see Certificate of Analysis for specific instructions of reconstitution.
Host Species	Humanized
IgG type	Human IgG1 - lambda
Reactivity	Human
Target	IL21R
Uniprot ID	Q9HBE5
Description	Anti-IL21R(ATR 107 biosimilar) mAb
Delivery	In Stock
Storage&Shipping	Store at -20°C to -80°C for 12 months in lyophilized form. After reconstitution, if not intended for use within a month, aliquot and store at -80°C (Avoid repeated freezing and thawing). Lyophilized antibodies are shipped at ambient temperature.
Background	Research grade biosimilar. Not for use in therapeutic or diagnostic procedures for humans or animals.
Usage	Research use only



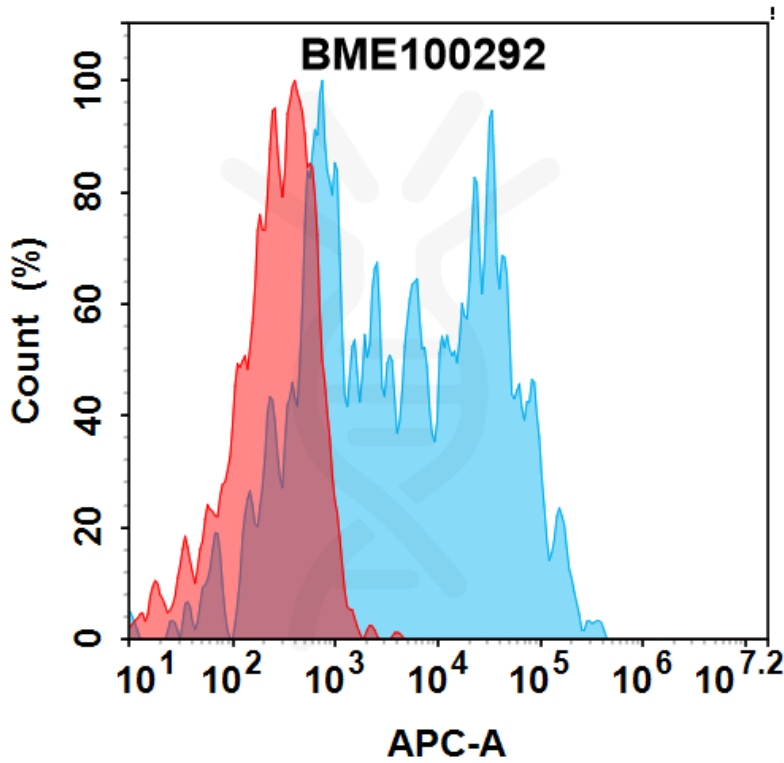


Figure 1. Flow cytometry analysis with 0.5 µg/ml Anti-IL21R(ATR 107 biosimilar) mAb (BME100292) on HEK293 cells transfected with human IL21R (Blue histogram) or HEK293 transfected with irrelevant protein (Red histogram).

Anti-IL21R(ATR 107 biosimilar) mAb ELISA

0.2 µg of Human IL21R, mFc tagged protein per well

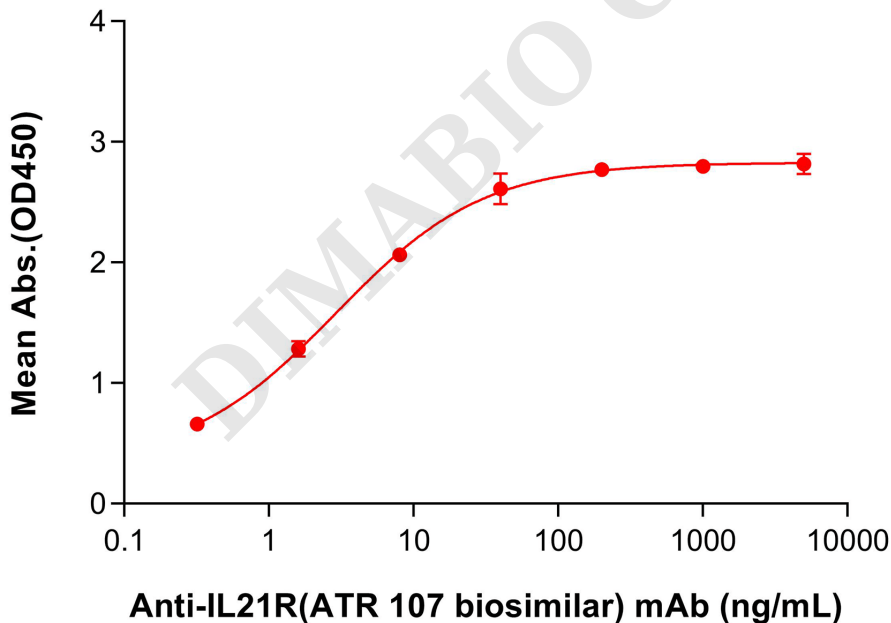


Figure 2. ELISA plate pre-coated by 2 µg/mL (100 µL/well) Human IL21R Protein, mFc Tag (PME100586) can bind Anti-IL21R(ATR 107 biosimilar) mAb (BME100292) in a linear range of 1.6-8.0 ng/mL.

