

PRODUCT INFORMATION

Common Name	temtokibart
Conjugate	Unconjugated
Synonyms	I22R1,IL22R
Applications	ELISA, Flow Cyt
Endotoxin	Less than 1.0 EU/ μ g by the LAL method. For <1 EU/mg requirements, please contact us for customization.
Recommended Dilutions	ELISA 1:5000-10000, Flow Cyt 1:100
Formulation & Reconstitution	Lyophilized from sterile PBS, pH 7.4. Normally 5% - 8% trehalose is added as protectants before lyophilization. Please see Certificate of Analysis for specific instructions of reconstitution.
Host Species	Humanized
IgG type	Human IgG1(N297Q,E356D,M358L)-lambda2
Reactivity	Human
Target	IL22RA1
Uniprot ID	Q8N6P7
Description	Anti-IL22RA1(temtokibart biosimilar) mAb
Delivery	In Stock
Storage&Shipping	Store at -20°C to -80°C for 12 months in lyophilized form. After reconstitution, if not intended for use within a month, aliquot and store at -80°C (Avoid repeated freezing and thawing). Lyophilized antibodies are shipped at ambient temperature.
Sterility	Products are supplied non-sterile. For cell culture applications, dilute in appropriate medium and sterile-filter (0.22 μ m) prior to use.
Background	Research grade biosimilar. Not for use in therapeutic or diagnostic procedures for humans or animals.
Usage	Research use only



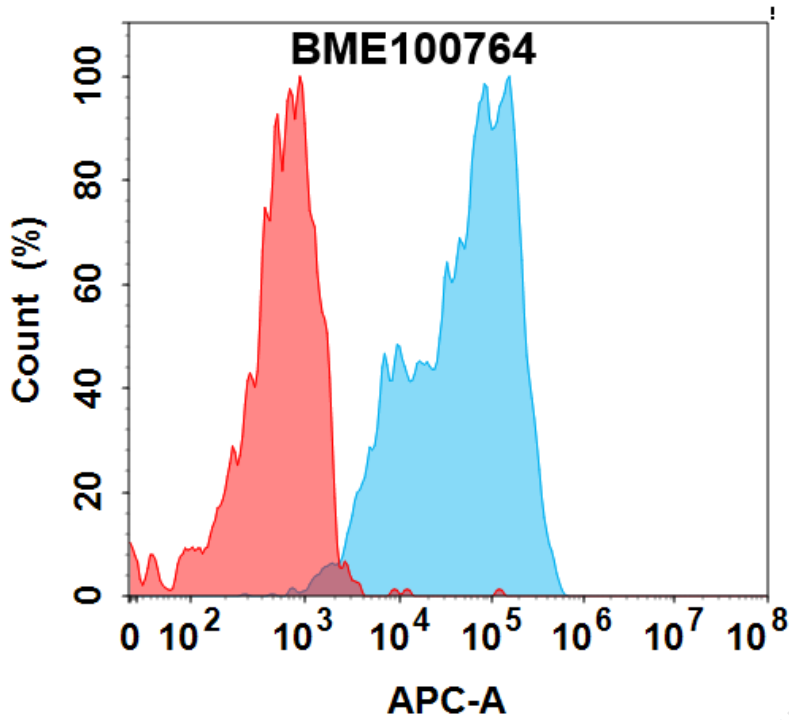


Figure 1. Flow cytometry analysis with 0.5 $\mu\text{g}/\text{mL}$ Anti-IL22RA1(temtokibart biosimilar) mAb (BME100764) on HEK293 cells transfected with Human IL22RA1 protein (Blue histogram) or HEK293 transfected with irrelevant protein (Red histogram).

Anti-IL22RA1(temtokibart biosimilar) mAb ELISA

0.2 μg of Human IL22RA1, hFc tagged protein per well

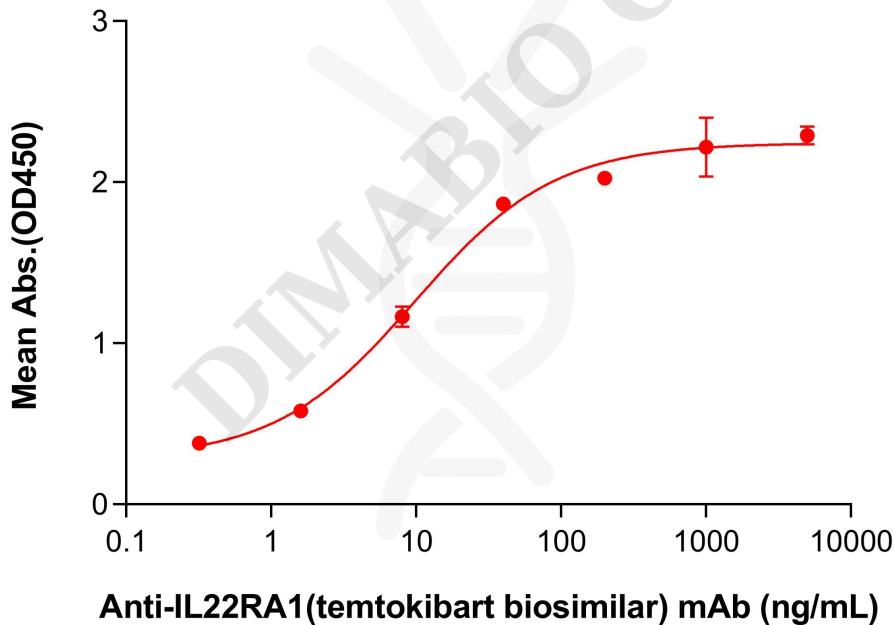


Figure 2. ELISA plate pre-coated by 2 $\mu\text{g}/\text{mL}$ (100 $\mu\text{L}/\text{well}$) Human IL22RA1, hFc Tag (PME101824) can bind Anti-IL22RA1(temtokibart biosimilar) mAb (BME100764) in a linear range of 1.6–40 ng/mL. In order to specifically detect BME100764, mouse anti-human Fab-specific antibody was used as detection antibody.

