

**PRODUCT INFORMATION**

|   |   |
|---|---|
| <b>Common Name</b>                      | CIM 331,CIM331  |
| <b>Conjugate</b>                        | Unconjugated  |
| <b>Synonyms</b>                         | CRL; GPL; CRL3; GLMR; GLM-R; PLCA2; hGLM-R; IL-31RA; PRO21384; zcytoR17   |
| <b>Applications</b>                     | ELISA, Flow Cyt   |
| <b>Endotoxin</b>                        | Less than 1.0 EU/µg by the LAL method. For <1 EU/mg requirements, please contact us for customization.  |
| <b>Recommended Dilutions</b>            | ELISA 1:5000-10000, Flow Cyt 1:100  |
| <b>Formulation &amp; Reconstitution</b> | Lyophilized from sterile PBS, pH 7.4. Normally 5 % - 8% trehalose is added as protectants before lyophilization. Please see Certificate of Analysis for specific instructions of reconstitution.  |
| <b>Host Species</b>                     | Humanized   |
| <b>IgG type</b>                         | Human<br>IgG2(C135S,R137K,E141G,S142G,C223S,H268Q,R355Q,S378A,Q419E)<br>- Kappa   |
| <b>Reactivity</b>                       | Human   |
| <b>Target</b>                           | IL31RA  |
| <b>Uniprot ID</b>                       | Q8NI17  |
| <b>Description</b>                      | Anti-IL31RA(nemolizumab biosimilar) mAb   |
| <b>Delivery</b>                         | In Stock  |
| <b>Storage&amp;Shipping</b>             | Store at -20°C to -80°C for 12 months in lyophilized form. After reconstitution, if not intended for use within a month, aliquot and store at -80°C (Avoid repeated freezing and thawing). Lyophilized antibodies are shipped at ambient temperature. |
| <b>Sterility</b>                        | Products are supplied non-sterile. For cell culture applications, dilute in appropriate medium and sterile-filter (0.22 µm) prior to use.   |
| <b>Background</b>                       | Research grade biosimilar. Not for use in therapeutic or diagnostic procedures for humans or animals.   |
| <b>Usage</b>                            | Research use only   |



## Anti-IL31RA(nemolizumab biosimilar) mAb ELISA

0.2  $\mu$ g of Human IL31RA, His tagged protein per well

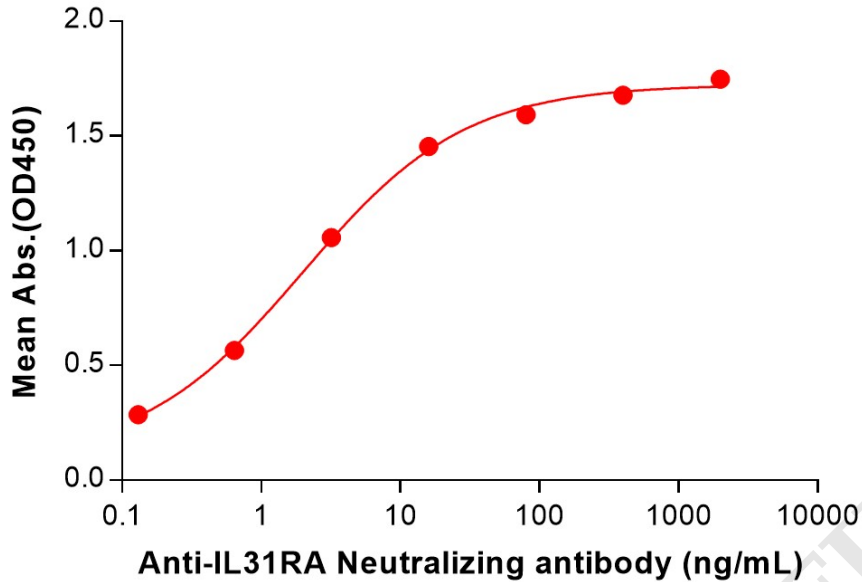


Figure 1. ELISA plate pre-coated by 2  $\mu$ g/mL (100  $\mu$ L/well) Human IL31RA Protein, His Tag (PME101406) can bind Anti-IL31RA(nemolizumab biosimilar) mAb (BME100231) in a linear range of 0.13–16 ng/mL.

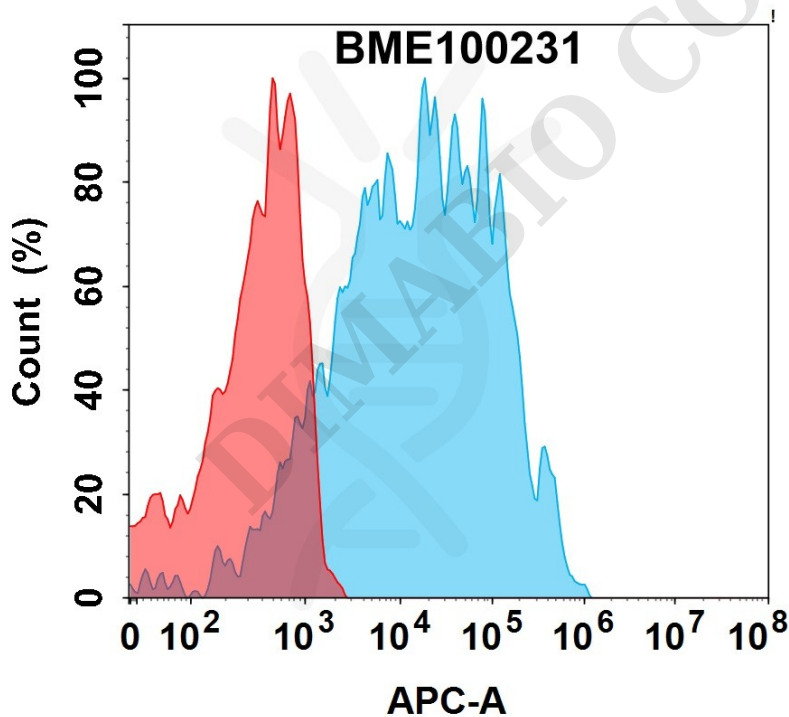


Figure 2. Flow cytometry analysis with 1 $\mu$ g/mL Anti-IL31RA(nemolizumab biosimilar) mAb (BME100231) on HEK293 cells transfected with Human IL31RA and OSMR protein (Blue histogram) or HEK293 transfected with Human OSMR protein (Red histogram).



### Anti-IL31RA(nemolizumab biosimilar) mAb ELISA

0.2  $\mu$ g of Human IL31RA(20-225), hFc tagged protein per well

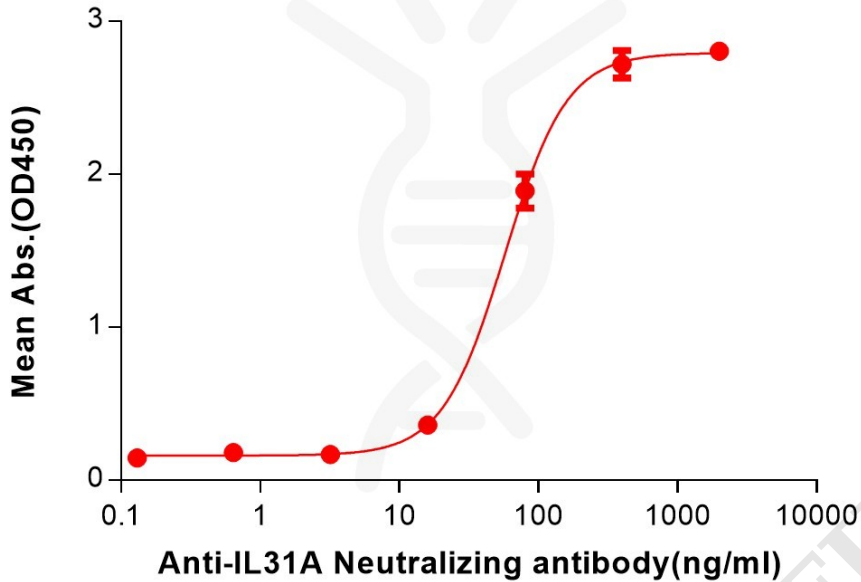


Figure 3. ELISA plate pre-coated by 2  $\mu$ g/mL (100  $\mu$ L/well) Human IL31RA(20-225) Protein, hFc Tag (PME101699) can bind Anti-IL31RA(nemolizumab biosimilar) mAb (BME100231) in a linear range of 16–400 ng/mL. In order to specifically detect BME100231, mouse human Fab-specific antibody was used as detection antibody.

### Anti-IL31RA(nemolizumab biosimilar) mAb ELISA

0.2  $\mu$ g of Human IL31RA(20-225), mFc tagged protein per well

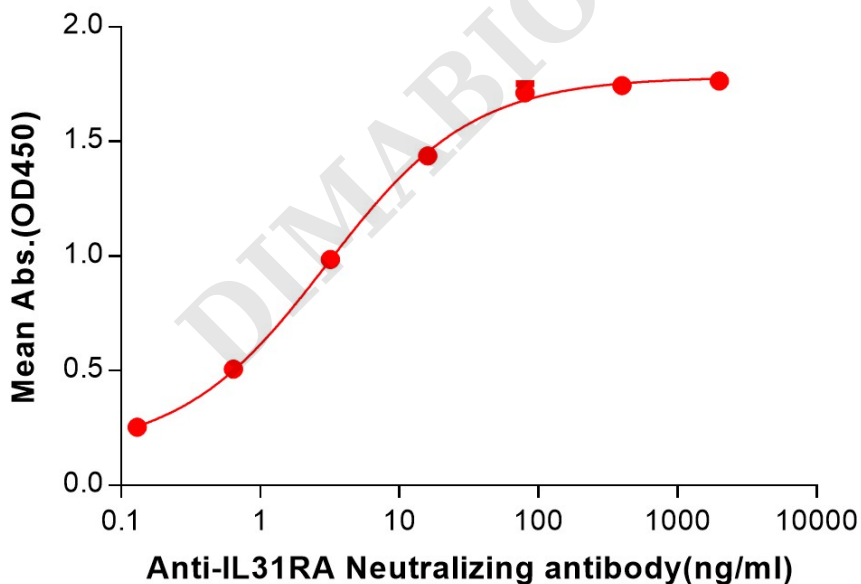


Figure 4. ELISA plate pre-coated by 2  $\mu$ g/mL (100  $\mu$ L/well) Human IL31RA(20-225) Protein, mFc Tag (PME101700) can bind Anti-IL31RA(nemolizumab biosimilar) mAb (BME100231) in a linear range of 0.13–16 ng/mL.

