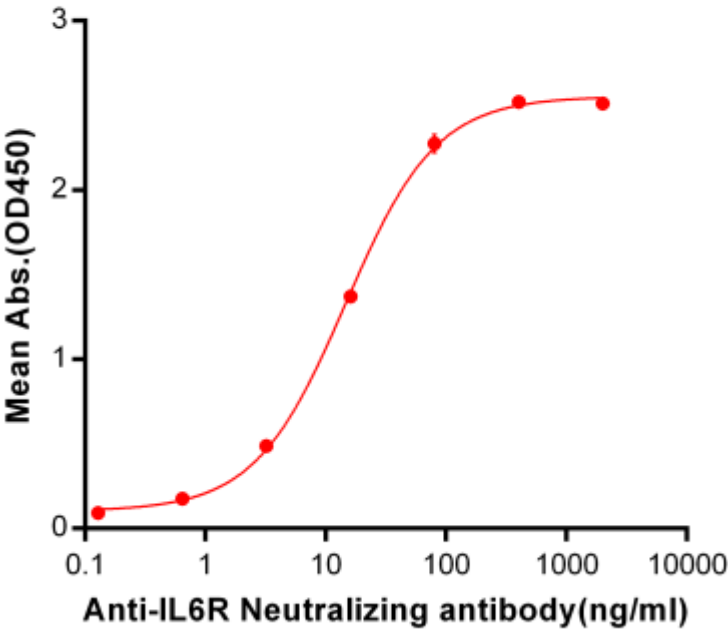


PRODUCT INFORMATION

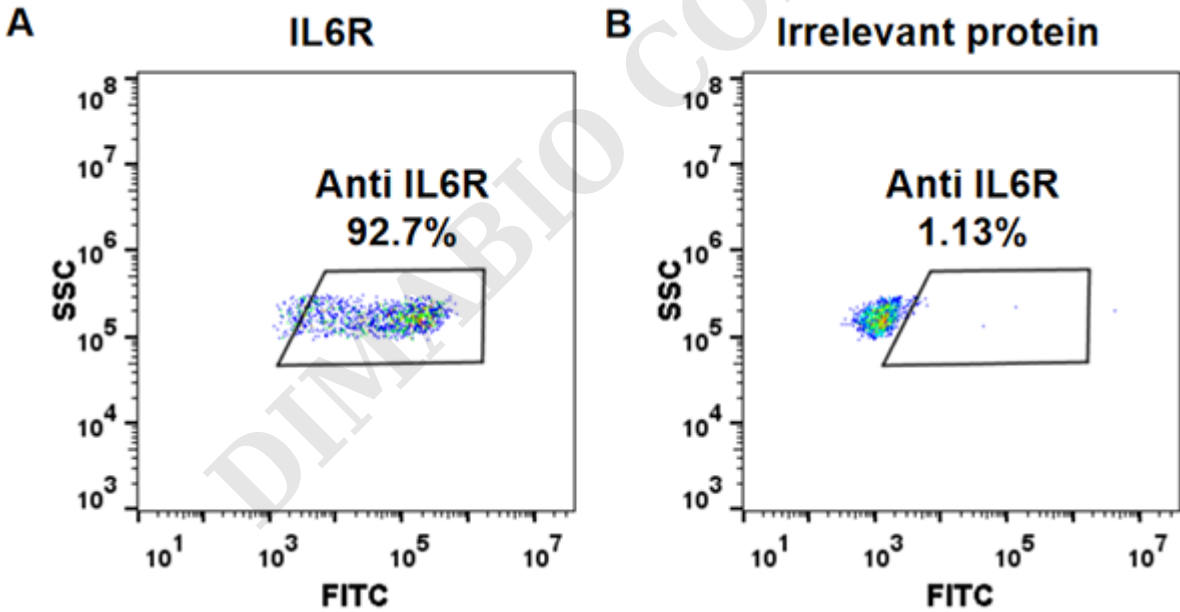
Common Name	MRA, atlizumab, rhPM-1
Synonyms	CD126;gp80;IL-6R-1;IL-6RA;IL6Q;IL6RA;IL6RQ
Conjugate	Unconjugated
Applications	ELISA; Flow Cyt
Recommended Dilutions	ELISA 1:5000-10000; Flow Cyt 1:100
Formulation & Reconstitution	Lyophilized from sterile PBS, pH 7.4. Normally 5 % - 8% trehalose is added as protectants before lyophilization. Please see Certificate of Analysis for specific instructions of reconstitution.
Host Species	Humanized
IgG type	Human IgG1 - kappa
Reactivity	Human
Target	IL6R
Uniprot ID	P08887
Description	Anti-IL6R (tocilizumab biosimilar) mAb
Delivery	In Stock
Storage&Shipping	Store at -20°C to -80°C for 12 months in lyophilized form. After reconstitution, if not intended for use within a month, aliquot and store at -80°C (Avoid repeated freezing and thawing). Lyophilized proteins are shipped at ambient temperature.
Background	Research grade biosimilar. Not for use in therapeutic or diagnostic procedures for humans or animals.
Usage	Research use only



**Anti-IL6R (tocilizumab biosimilar) mAb ELISA**  
0.2 µg of Human IL6R, His Tagged protein per well



**Figure 1.** ELISA plate pre-coated by 2 µg/ml (100 µl/well) Human IL6R, His tagged protein ([getskuurl sku="PME100109"]) can bind Anti-IL6R Neutralizing antibody (BME100041) in a linear range of 0.64-80 ng/ml.



**Figure 2.** HEK293 cell line transfected with irrelevant protein (B) and human IL6R (A) were surface stained with Anti-IL6R mAb 1 µg/ml (tocilizumab) followed by Alexa 488-conjugated anti-human IgG secondary antibody.

