

PRODUCT INFORMATION

Common Name	REGN88, SAR153191
Conjugate	Unconjugated
Synonyms	CD126, gp80, IL-6R-1, IL-6RA, IL6Q, IL6RA, IL6RQ
Applications	ELISA, Flow Cyt
Endotoxin	Less than 1.0 EU/ μ g by the LAL method. For <1 EU/mg requirements, please contact us for customization.
Recommended Dilutions	ELISA 1:5000-10000, Flow Cyt 1:100
Formulation & Reconstitution	Lyophilized from sterile PBS, pH 7.4. Normally 5% - 8% trehalose is added as protectants before lyophilization. Please see Certificate of Analysis for specific instructions of reconstitution.
Host Species	Homo sapiens
IgG type	Human IgG1(E356D,M358L) - kappa
Reactivity	Human
Target	IL6R
Uniprot ID	P08887
Description	Anti-IL6R(sarilumab biosimilar) mAb
Delivery	In Stock
Storage&Shipping	Store at -20°C to -80°C for 12 months in lyophilized form. After reconstitution, if not intended for use within a month, aliquot and store at -80°C (Avoid repeated freezing and thawing). Lyophilized antibodies are shipped at ambient temperature.
Background	Research grade biosimilar. Not for use in therapeutic or diagnostic procedures for humans or animals.
Usage	Research use only



Anti-IL6R(sarilumab biosimilar) mAb ELISA

0.2 μ g of Human IL6R, hFc tagged protein per well

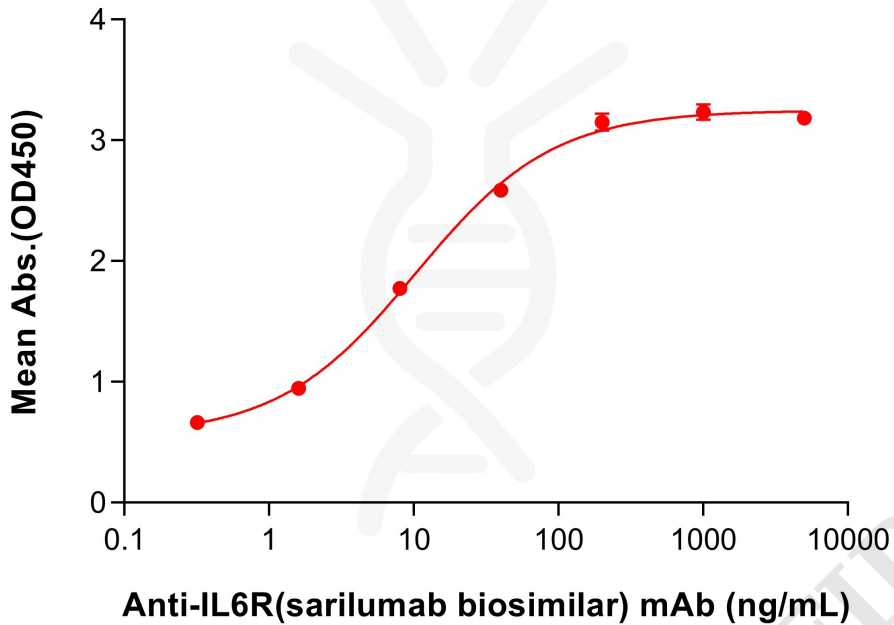


Figure 1. ELISA plate pre-coated by 2 μ g/mL (100 μ L/well) Human IL6R Protein, hFc Tag (PME100535) can bind Anti-IL6R(sarilumab biosimilar) mAb (BME100662) in a linear range of 1.6–40 ng/mL. In order to specifically detect BME100662, mouse anti-human Fab-specific antibody was used as detection antibody.

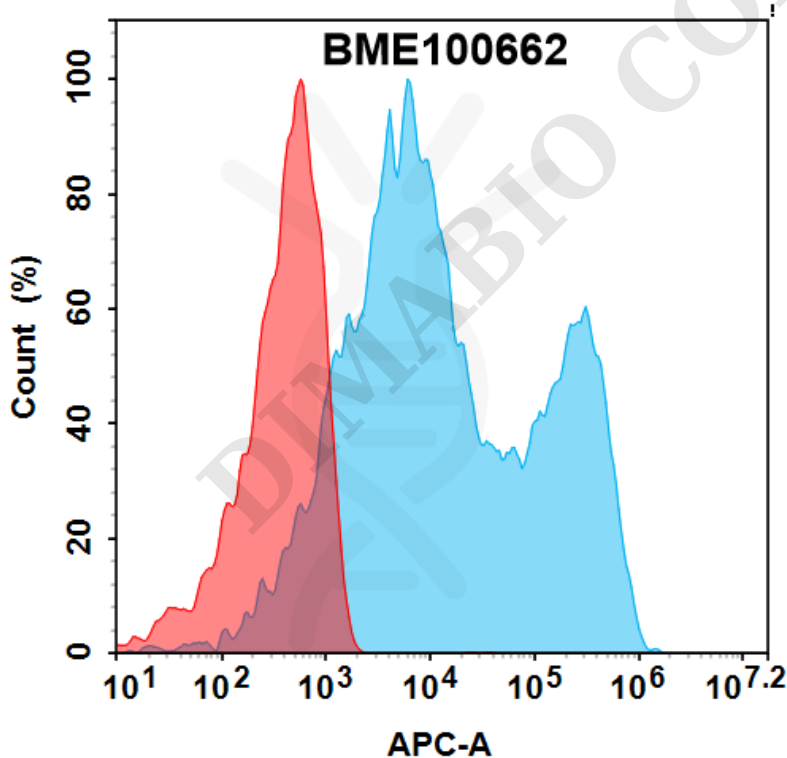


Figure 2. Flow cytometry analysis with 0.5 μ g/ml Anti-IL6R(sarilumab biosimilar) mAb (BME100662) on HEK293 cells transfected with human IL6R (Blue histogram) or HEK293 transfected with irrelevant protein (Red histogram).

