

PRODUCT INFORMATION

Common Name	ADX-914
Conjugate	Unconjugated
Synonyms	IL7R, CD127, CDw127
Applications	ELISA, Flow Cyt
Endotoxin	Less than 1.0 EU/ μ g by the LAL method. For <1 EU/mg requirements, please contact us for customization.
Recommended Dilutions	ELISA 1:5000-10000, Flow Cyt 1:100
Formulation & Reconstitution	Lyophilized from sterile PBS, pH 7.4. Normally 5% - 8% trehalose is added as protectants before lyophilization. Please see Certificate of Analysis for specific instructions of reconstitution.
Host Species	Homo sapiens
IgG type	Human IgG1(K214R,L234A,L235E,G237A) - kappa
Reactivity	Human
Target	IL7RA
Uniprot ID	P16871
Description	Anti-IL7RA(bempikibart biosimilar) mAb
Delivery	In Stock
Storage&Shipping	Store at -20°C to -80°C for 12 months in lyophilized form. After reconstitution, if not intended for use within a month, aliquot and store at -80°C (Avoid repeated freezing and thawing). Lyophilized antibodies are shipped at ambient temperature.
Sterility	Products are supplied non-sterile. For cell culture applications, dilute in appropriate medium and sterile-filter (0.22 μ m) prior to use.
Background	Research grade biosimilar. Not for use in therapeutic or diagnostic procedures for humans or animals.
Usage	Research use only



Anti-IL7RA(bempikibart biosimilar) mAb ELISA

0.2 μ g of Human IL7RA, hFc tagged protein per well

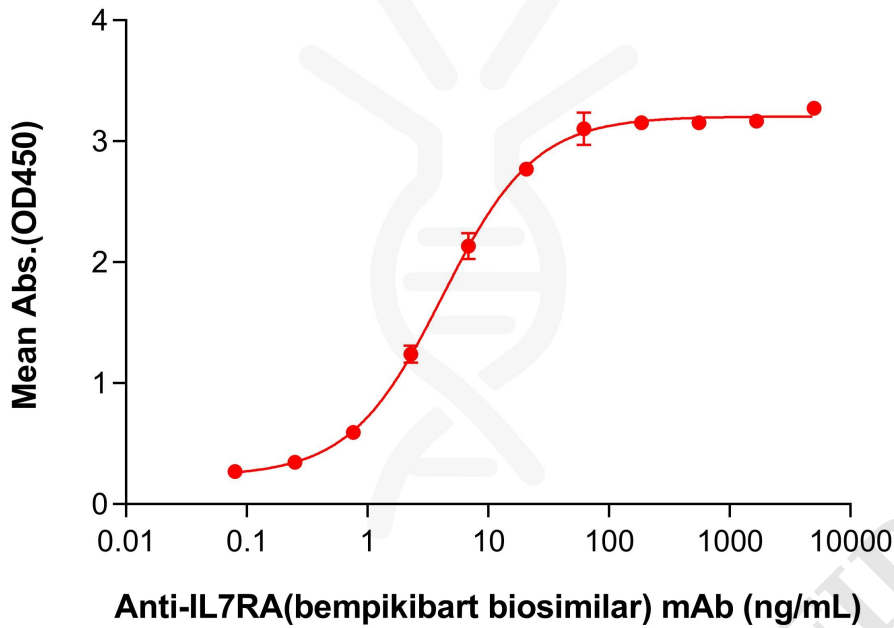


Figure 1. ELISA plate pre-coated by 2 μ g/mL (100 μ L/well) Human IL7RA Protein, hFc Tag (PME100840) can bind Anti-IL7RA(bempikibart biosimilar) mAb (BME100428) in a linear range of 0.76–20.58 ng/mL.

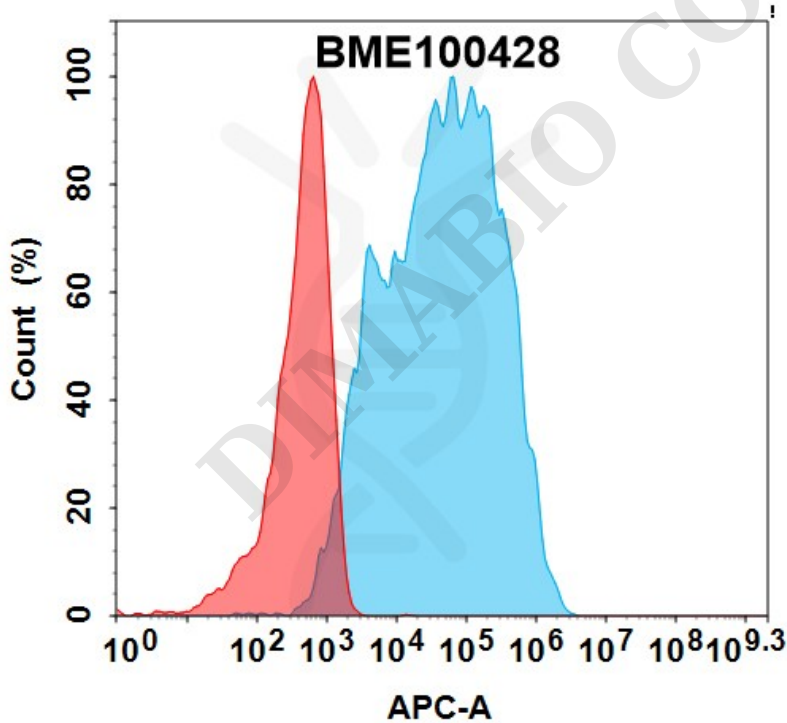


Figure 2. Flow cytometry analysis with 1 μ g/mL Anti-IL7RA(bempikibart biosimilar) mAb (BME100428) on HEK293 cells transfected with Human CRLF2 and IL7RA protein (Blue histogram) or HEK293 transfected with CRLF2 protein (Red histogram).

