

PRODUCT INFORMATION

Common Name	ABC-008,ABC008
Synonyms	2F1;CLEC15A;MAFA;MAFA-2F1;MAFA-L;MAFA-LIKE
Conjugate	Unconjugated
Applications	ELISA, Flow Cyt
Recommended Dilutions	ELISA 1:5000-10000, Flow Cyt 1:100
Formulation & Reconstitution	Lyophilized from sterile PBS, pH 7.4. Normally 5% - 8% trehalose is added as protectants before lyophilization. Please see Certificate of Analysis for specific instructions of reconstitution.
Host Species	Humanized
IgG type	Human IgG1(E356D,M358L) - kappa
Reactivity	Human
Target	KLRG1
Uniprot ID	Q96E93
Description	Anti-KLRG1(ulviprubart biosimilar) mAb
Delivery	In Stock
Storage&Shipping	Store at -20°C to -80°C for 12 months in lyophilized form. After reconstitution, if not intended for use within a month, aliquot and store at -80°C (Avoid repeated freezing and thawing). Lyophilized proteins are shipped at ambient temperature.
Background	Research grade biosimilar. Not for use in therapeutic or diagnostic procedures for humans or animals.
Usage	Research use only



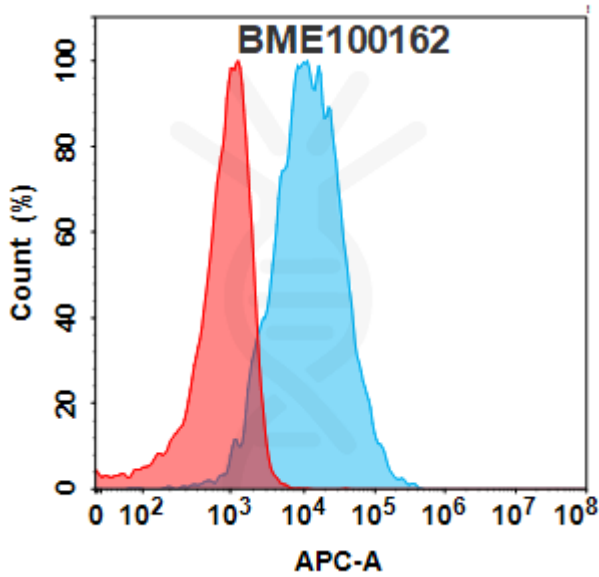


Figure 1. Flow cytometry analysis with 1 μ g/mL Anti-KLRG1(ulviprubart biosimilar) mAb (BME100162) on HEK293 cells transfected with Human KLRG1 protein (Blue histogram) or HEK293 transfected with irrelevant protein (Red histogram).

Anti-KLRG1(ulviprubart biosimilar) mAb ELISA

0.2 μ g of Human KLRG1, hFc tagged protein per well

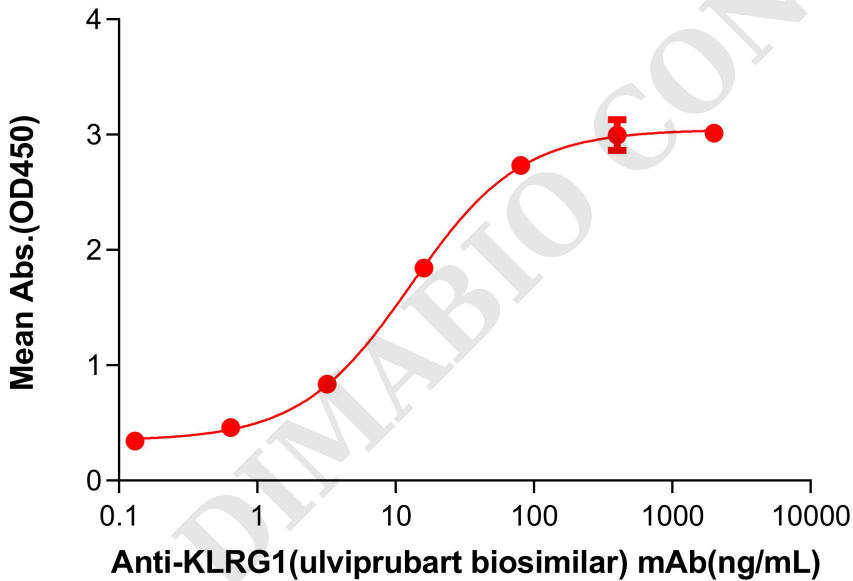


Figure 2. ELISA plate pre-coated by 2 μ g/mL (100 μ L/well) Human KLRG1 Protein, hFc Tag (PME100321) can bind Anti-KLRG1(ulviprubart biosimilar) mAb (BME100162) in a linear range of 3.20–80 ng/mL. In order to specifically detect BME100162, mouse anti-human Fab-specific antibody was used as detection antibody.

