

PRODUCT INFORMATION

Clone ID	DM160
Target	LAG3
Synonyms	LAG-3; CD223
Host Species	Rabbit
Description	Anti-LAG3 antibody(DM160); Rabbit mAb
Delivery	In Stock
Uniprot ID	P18627
IgG type	Rabbit IgG
Clonality	Monoclonal
Reactivity	Human
Applications	ELISA; Flow Cyt
Recommended Dilutions	ELISA 1:5000-10000; Flow Cyt 1:100
Purification	Purified from cell culture supernatant by affinity chromatography
Formulation & Reconstitution	Lyophilized from sterile PBS, pH 7.4. Normally 5 % - 8% trehalose is added as protectants before lyophilization. Please see Certificate of Analysis for specific instructions of reconstitution.
Storage&Shipping	Store at -20°C to -80°C for 12 months in lyophilized form. After reconstitution, if not intended for use within a month, aliquot and store at -80°C (Avoid repeated freezing and thawing). Lyophilized proteins are shipped at ambient temperature.
Background	Lymphocyte-activation protein 3 belongs to Ig superfamily and contains 4 extracellular Ig-like domains. The LAG3 gene contains 8 exons. The sequence data; exon:intron organization; and chromosomal localization all indicate a close relationship of LAG3 to CD4. [provided by RefSeq; Jul 2008]
Usage	Research use only
Conjugate	Unconjugated
DIMA Disclaimer	All DIMA recombinant antibodies are genuinely generated by DIMA Biotech. They are all under patent application. Any protein sequencing or reverse engineering attempt is prohibited. We are actively scrutinizing all patent application to ensure no IP infringement.



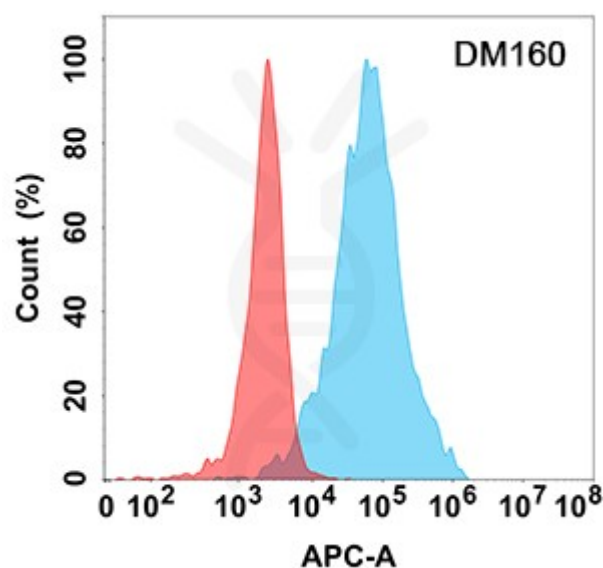


Figure 1. Flow cytometry analysis with Anti-LAG3 (DM160) on HEK293 cells transfected with human LAG3 (Blue histogram) or HEK293 transfected with irrelevant protein (Red histogram).

