

PRODUCT INFORMATION

Clone ID	3E12
Target	LRP10
Synonyms	LRP-10;LRP9;MST087;MSTP087
Host Species	Rabbit
Description	Anti-LRP10 antibody(3E12), Rabbit mAb
Delivery	In Stock
Uniprot ID	Q7Z4F1
IgG type	Rabbit IgG
Clonality	Monoclonal
Reactivity	Human
Applications	Flow Cyt
Recommended Dilutions	Flow Cyt 1/100
Purification	Purified from cell culture supernatant by affinity chromatography
Formulation & Reconstitution	Lyophilized from sterile PBS, pH 7.4. Normally 5 % - 8% trehalose is added as protectants before lyophilization. Please see Certificate of Analysis for specific instructions of reconstitution.
Storage&Shipping	Store at -20°C to -80°C for 12 months in lyophilized form. After reconstitution, if not intended for use within a month, aliquot and store at -80°C (Avoid repeated freezing and thawing).
Background	This gene encodes a low density lipoprotein receptor family protein. A similar protein in mouse is thought to play a role in the uptake of apolipoprotein E-containing lipoproteins. [provided by RefSeq, Jul 2016]
Usage	Research use only
Conjugate	Unconjugated



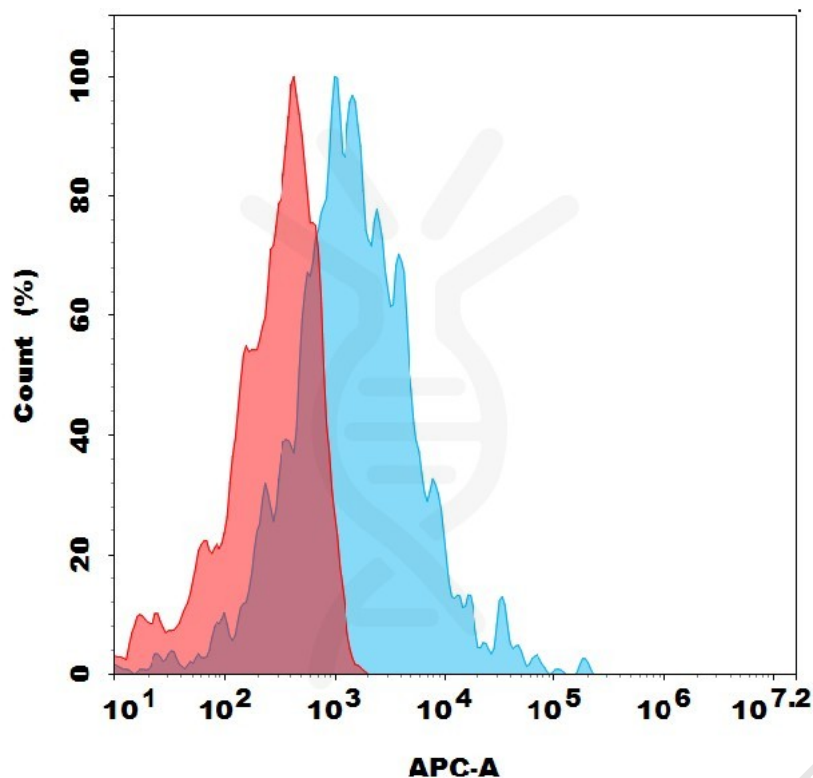


Figure 1. Flow cytometry analysis with 2 $\mu$ g/mL Anti-LRP10 (3E12) mAb on HEK293 cells transfected with human LRP10 (Blue histogram) or HEK293 transfected with irrelevant protein (Red histogram).

