

PRODUCT INFORMATION

Common Name	1G4
Synonyms	C6orf23, G6D, MEGT1, NG25
Conjugate	Unconjugated
Applications	ELISA □ Flow Cyt
Recommended Dilutions	ELISA 1:5000-10000 □ Flow Cyt 1:100
Endotoxin	Less than 1.0 EU/μg by the LAL method. For <1 EU/mg requirements, please contact us for customization.
Formulation & Reconstitution	Lyophilized from sterile PBS, pH 7.4. Normally 5% - 8% trehalose is added as protectants before lyophilization. Please see Certificate of Analysis for specific instructions of reconstitution.
Host Species	Humanized
IgG type	Human IgG1 - kappa
Reactivity	Human
Target	LY6G6D
Uniprot ID	O95868
Description	Anti-LY6G6D(Genentech biosimilar) mAb
Delivery	In Stock
Storage&Shipping	Store at -20°C to -80°C for 12 months in lyophilized form. After reconstitution, if not intended for use within a month, aliquot and store at -80°C (Avoid repeated freezing and thawing). Lyophilized antibodies are shipped at ambient temperature.
Sterility	Products are supplied non-sterile. For cell culture applications, dilute in appropriate medium and sterile-filter (0.22 μm) prior to use.
Background	Research grade biosimilar. Not for use in therapeutic or diagnostic procedures for humans or animals.
Usage	Research use only



Anti-LY6G6D(Genentech biosimilar) mAb ELISA

0.2 μ g of Human LY6G6D, hFc tagged Protein per well

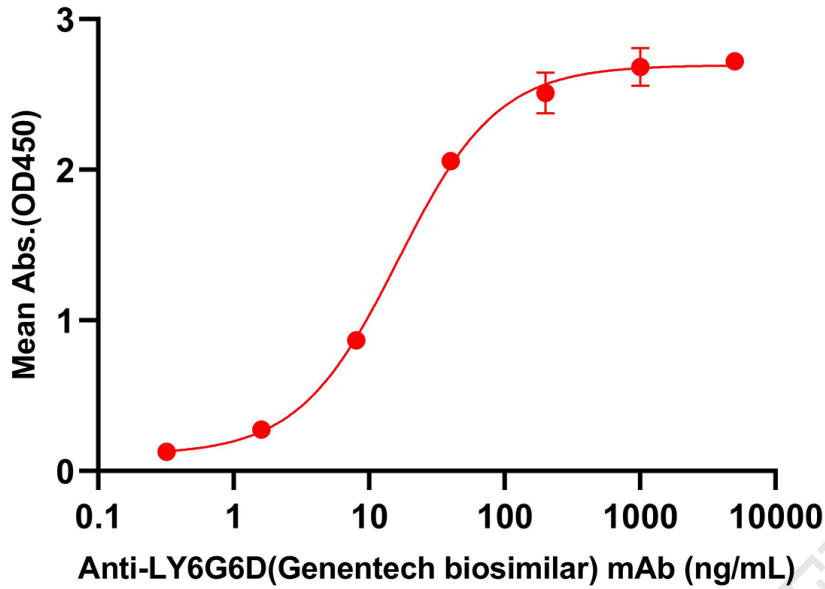


Figure 1. ELISA plate pre-coated by 2 μ g/mL (100 μ L/well) Human LY6G6D Protein, hFc Tag (PME101954) can bind Anti-LY6G6D(Genentech biosimilar) mAb (BME100303) in a linear range of 3.2-16 ng/mL.

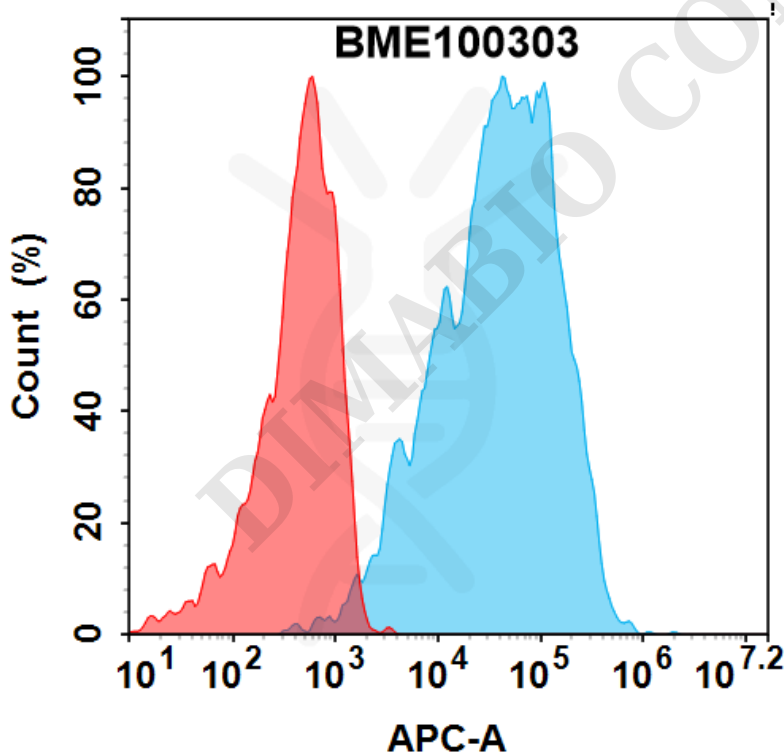


Figure 2. Flow cytometry analysis with 0.5 μ g/ml Anti-LY6G6D(Genentech biosimilar) mAb (BME100303) on HEK293 cells transfected with Human LY6G6D protein (Blue histogram) or HEK293 transfected with irrelevant protein (Red histogram).

