

PRODUCT INFORMATION

Common Name	LA480, LY-2875358, LY2875358
Conjugate	Unconjugated
Synonyms	MET
Applications	ELISA, Flow Cyt
Recommended Dilutions	ELISA 1:5000-10000, Flow Cyt 1:100
Formulation & Reconstitution	Lyophilized from sterile PBS, pH 7.4. Normally 5 % - 8% trehalose is added as protectants before lyophilization. Please see Certificate of Analysis for specific instructions of reconstitution.
Host Species	Humanized
IgG type	Human IgG4(F234A,L235A) - Kappa
Reactivity	Human
Target	MET
Uniprot ID	P08581
Description	Anti-MET(emibetuzumab biosimilar) mAb
Delivery	In Stock
Storage & Shipping	Store at -20°C to -80°C for 12 months in lyophilized form. After reconstitution, if not intended for use within a month, aliquot and store at -80°C (Avoid repeated freezing and thawing). Lyophilized antibodies are shipped at ambient temperature.
Background	Research grade biosimilar. Not for use in therapeutic or diagnostic procedures for humans or animals.
Usage	Research use only



Anti-MET(emibetuzumab biosimilar) mAb ELISA
0.2 µg of Human MET, His tagged protein per well

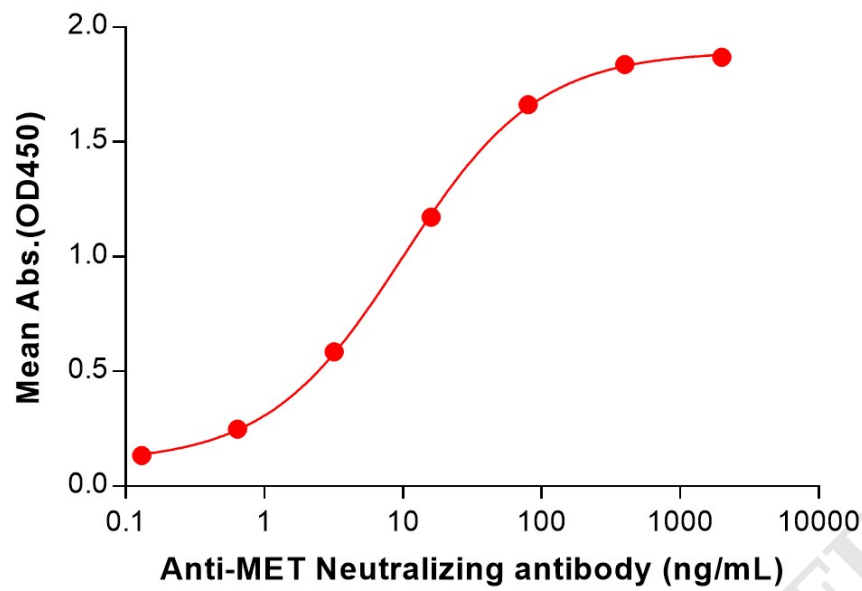


Figure 1. ELISA plate pre-coated by 2 µg/mL (100 µL/well) Human MET Protein, His Tag (PME101405) can bind Anti-MET(emibetuzumab biosimilar) mAb (BME100245) in a linear range of 0.64-80 ng/mL.

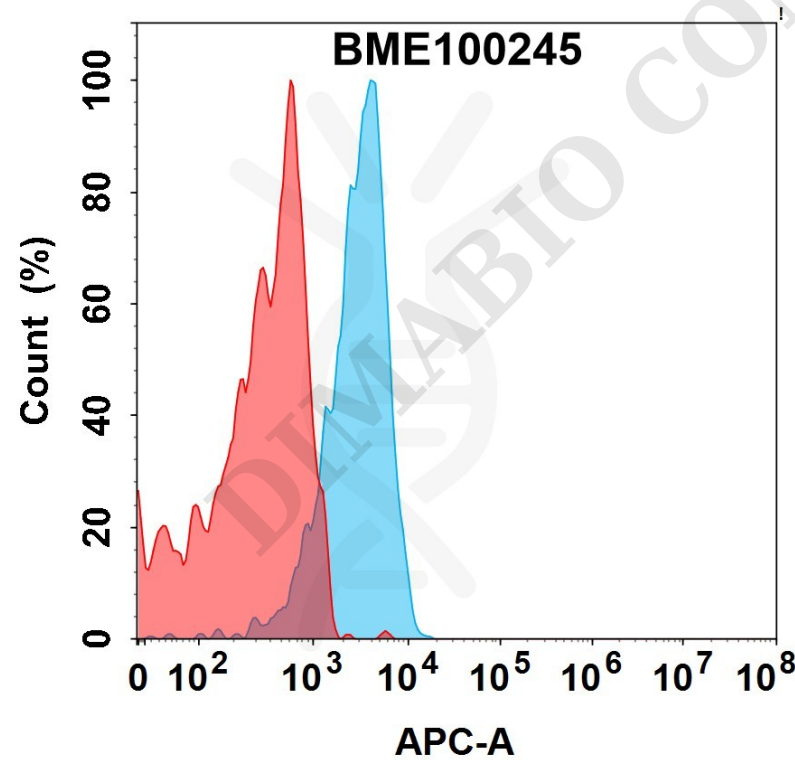


Figure 2. MET protein is expressed on the surface of HEK293 cell membrane. Flow cytometry analysis with 1 µg/mL Anti-MET(emibetuzumab biosimilar) mAb (BME100245) (Blue histogram) or isotype control mAb (Red histogram) on HEK293 cells.

