

PRODUCT INFORMATION

| | |
|---|--|
| Clone ID | OTI4E10 (formerly 4E10) |
| Target | mOrange, mOrange2 |
| Synonyms | N/A |
| Host Species | Mouse |
| Description | Carrier-free (BSA/glycerol-free) Mouse monoclonal mOrange/mOrange2 antibody, clone OTI4E10 |
| Delivery | 3-4week |
| Uniprot ID | N/A |
| IgG type | IgG2b |
| Clonality | Monoclonal |
| Reactivity | N/A |
| Applications | WB |
| Recommended Dilutions | WB: 1:2000 |
| Purification | N/A |
| Formulation & Reconstitution | Lyophilized powder (original buffer 1X PBS, pH 7.3, 8% trehalose) |
| Storage&Shipping | Store at -20°C. |
| Background | N/A |
| Usage | Research use only |
| Conjugate | Unconjugated |



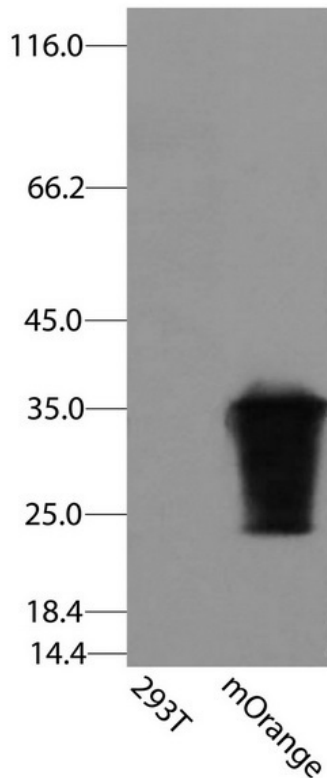


Figure 1. HEK293T cells were transfected with the pCMV6-ENTRY control (Left lane) or pCMV6-ENTRY mOrange (Right lane) cDNA for 48 hrs and lysed. Equivalent amounts of cell lysates (5 ug per lane) were separated by SDS-PAGE and immunoblotted with anti-mOrange/mOrange2 (DME900026, 1:2000).

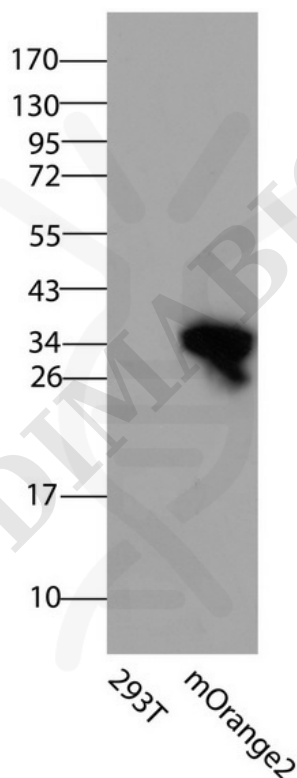


Figure 2. HEK293T cells were transfected with the pCMV6-ENTRY control (Left lane) or pCMV6-ENTRY mOrange2 (Right lane) cDNA for 48 hrs and lysed. Equivalent amounts of cell lysates (5 ug per lane) were separated by SDS-PAGE and immunoblotted with anti-mOrange/mOrange2 (DME900026, 1:2000).

