

PRODUCT INFORMATION

Clone ID	OTI2A6 (formerly 2A6)
Target	mRaspberry, AmCyan1
Synonyms	N/A
Host Species	Mouse
Description	Carrier-free (BSA/glycerol-free) Mouse monoclonal mRaspberry/AmCyan1 antibody, clone OTI2A6
Delivery	3-4week
Uniprot ID	N/A
IgG type	IgG1
Clonality	Monoclonal
Reactivity	N/A
Applications	WB
Recommended Dilutions	WB: 1:2000
Purification	N/A
Endotoxin	Less than 1.0 EU/μg by the LAL method. For <1 EU/mg requirements, please contact us for customization.
Formulation & Reconstitution	Lyophilized powder (original buffer 1X PBS, pH 7.3, 8% trehalose)
Storage&Shipping	Store at -20°C.
Sterility	Products are supplied non-sterile. For cell culture applications, dilute in appropriate medium and sterile-filter (0.22 μm) prior to use.
Background	N/A
Usage	Research use only
Conjugate	Unconjugated



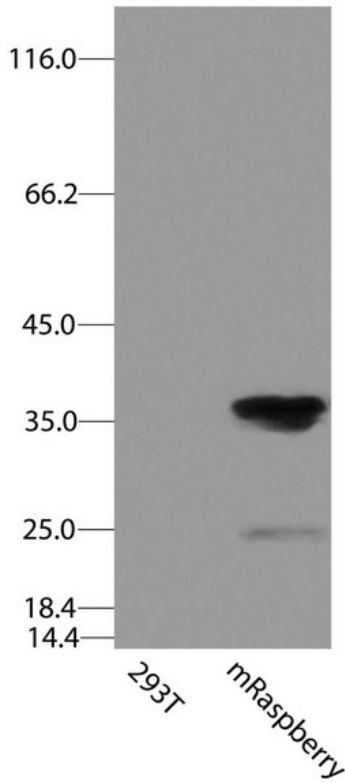


Figure 1. HEK293T cells were transfected with the pCMV6-ENTRY control (Left lane) or pCMV6-ENTRY mRaspberry (Right lane) cDNA for 48 hrs and lysed. Equivalent amounts of cell lysates (5 ug per lane) were separated by SDS-PAGE and immunoblotted with anti-mRaspberry/AmCyan1 (DME900022, 1:2000).

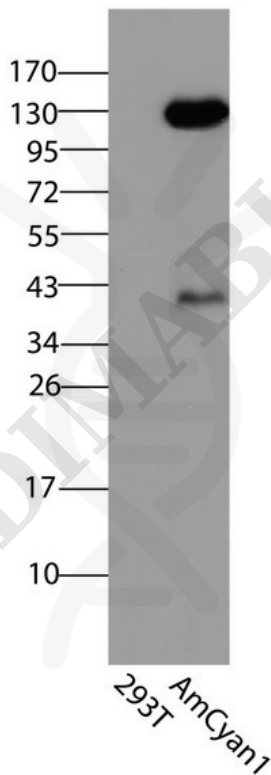


Figure 2. HEK293T cells were transfected with the pCMV6-ENTRY control (Left lane) or pCMV6-ENTRY AmCyan1 (Right lane) cDNA for 48 hrs and lysed. Equivalent amounts of cell lysates (5 ug per lane) were separated by SDS-PAGE and immunoblotted with anti-mRaspberry/AmCyan1 (DME900022, 1:2000).

