

PRODUCT INFORMATION

Clone ID	2C10
Target	NCR1
Synonyms	CD335;LY94;NK-p46;NKP46
Host Species	Rabbit
Description	Anti-NCR1 antibody(2C10), IgG1 Chimeric mAb
Delivery	In Stock
Uniprot ID	O76036
IgG type	Rabbit/Human Fc chimeric IgG1
Clonality	Monoclonal
Reactivity	Human
Applications	Flow Cyt
Recommended Dilutions	Flow Cyt 1/100
Purification	Purified from cell culture supernatant by affinity chromatography
Formulation & Reconstitution	Lyophilized from sterile PBS, pH 7.4. Normally 5 % - 8% trehalose is added as protectants before lyophilization. Please see Certificate of Analysis for specific instructions of reconstitution.
Storage & Shipping	Store at -20°C to -80°C for 12 months in lyophilized form. After reconstitution, if not intended for use within a month, aliquot and store at -80°C (Avoid repeated freezing and thawing). Lyophilized proteins are shipped at ambient temperature.
Background	Cytotoxicity-activating receptor that may contribute to the increased efficiency of activated natural killer (NK) cells to mediate tumor cell lysis.[UniProtKB/Swiss-Prot Function]
Usage	Research use only



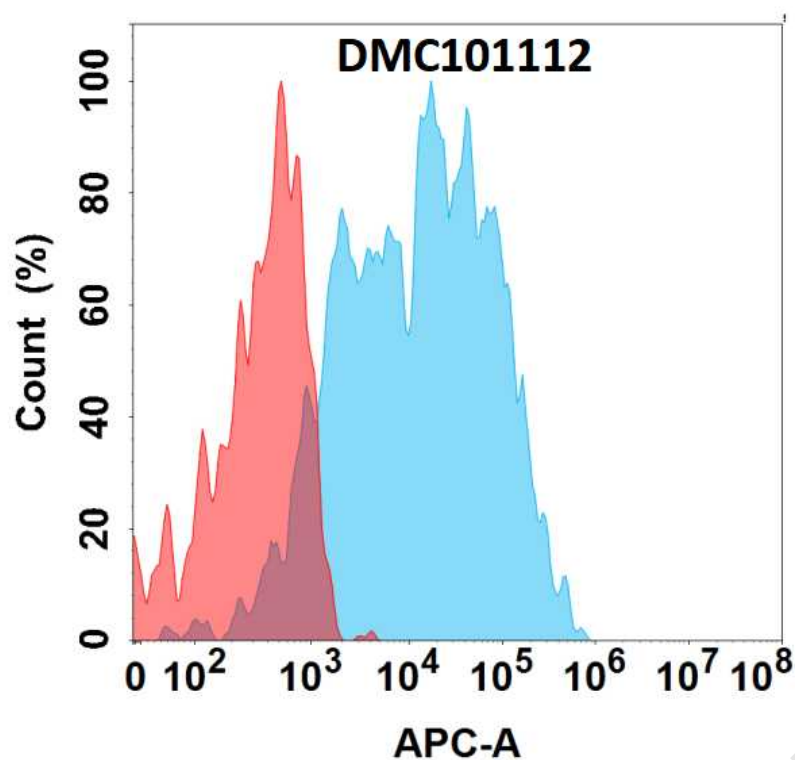


Figure 1. Flow cytometry analysis with 1 μ g/mL Anti-NCR1 (2C10) mAb on Expi293 cells transfected with human NCR1 (Blue histogram) or Expi293 transfected with irrelevant protein (Red histogram).

