

PRODUCT INFORMATION

Clone ID	DMC438
Target	NECTIN4
Synonyms	EDSS1; LNIR; nectin-4; PRR4; PVRL4
Host Species	Rabbit
Description	Anti-Nectin4 antibody(DMC438); IgG1 Chimeric mAb
Delivery	In Stock
Uniprot ID	Q96NY8
IgG type	Rabbit/Human Fc chimeric IgG1
Clonality	Monoclonal
Reactivity	Human
Applications	Flow Cyt
Recommended Dilutions	Flow Cyt 1:100
Purification	Purified from cell culture supernatant by affinity chromatography
Formulation & Reconstitution	Lyophilized from sterile PBS, pH 7.4. Normally 5 % - 8% trehalose is added as protectants before lyophilization. Please see Certificate of Analysis for specific instructions of reconstitution.
Storage & Shipping	Store at -20°C to -80°C for 12 months in lyophilized form. After reconstitution, if not intended for use within a month, aliquot and store at -80°C (Avoid repeated freezing and thawing). Lyophilized proteins are shipped at ambient temperature.
Background	This gene encodes a member of the nectin family. The encoded protein contains two immunoglobulin-like (Ig-like) C2-type domains and one Ig-like V-type domain. It is involved in cell adhesion through trans-homophilic and -heterophilic interactions. It is a single-pass type I membrane protein. The soluble form is produced by proteolytic cleavage at the cell surface by the metalloproteinase ADAM17:TACE. The secreted form is found in both breast tumor cell lines and breast tumor patients. Mutations in this gene are the cause of ectodermal dysplasia-syndactyly syndrome type 1; an autosomal recessive disorder. Alternatively spliced transcript variants have been found but the full-length nature of the variant has not been determined.
Usage	Research use only



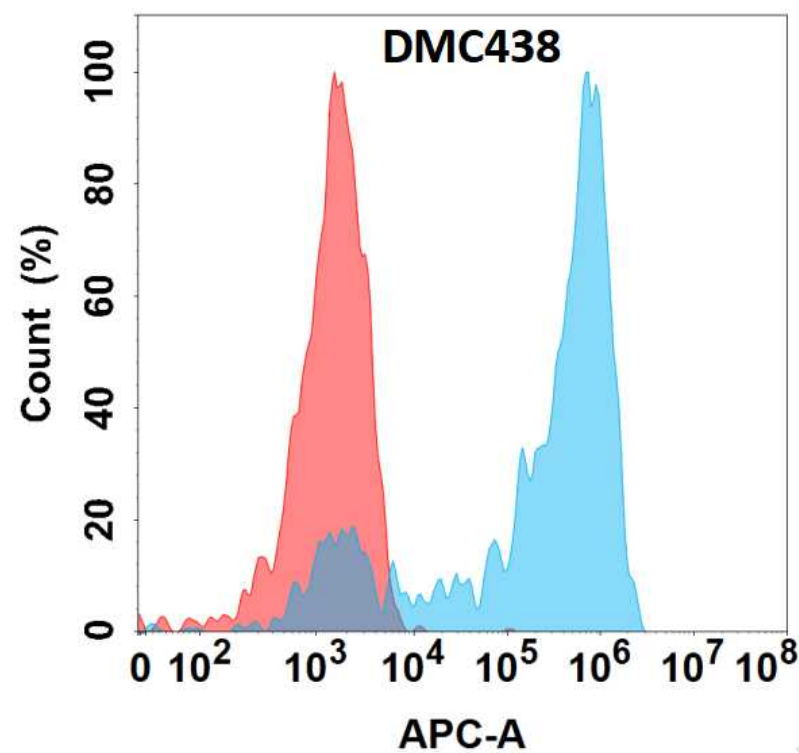


Figure 1. Flow cytometry analysis with Anti-Nectin4 (DMC438) on Expi293 cells transfected with human Nectin4 (Blue histogram) or Expi293 transfected with irrelevant protein (Red histogram).

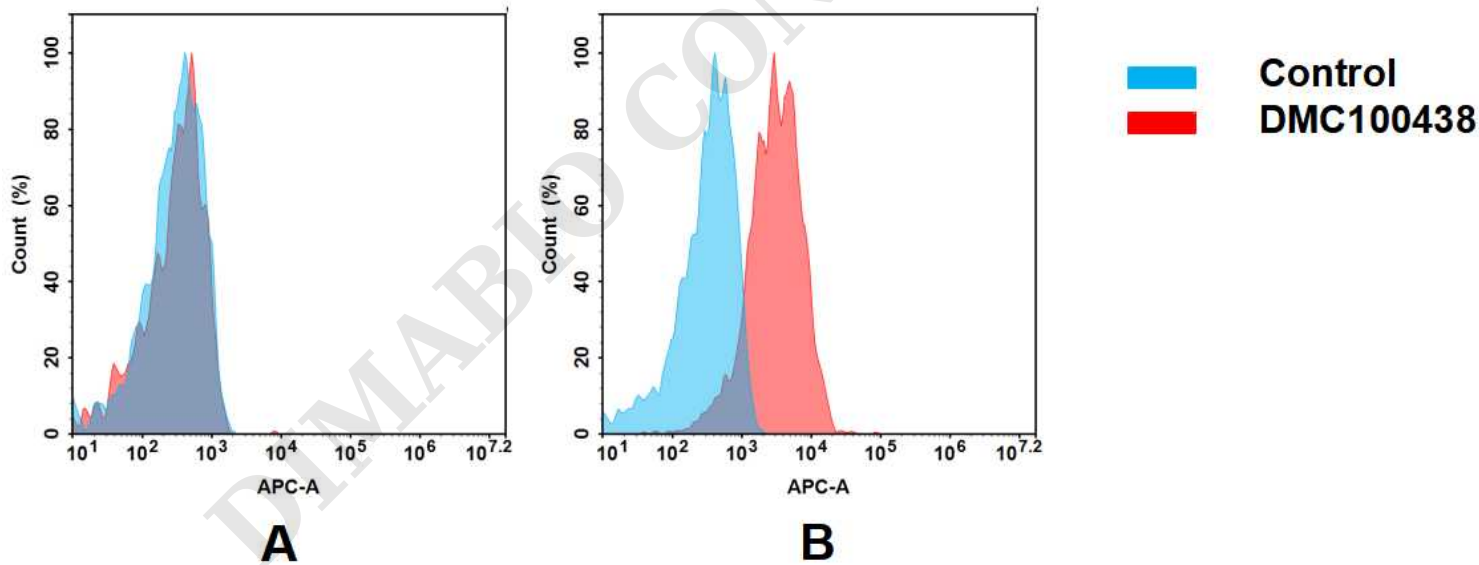


Figure 2. Flow cytometry analysis of antigen binding of anti-human Nectin4 mAb(DMC100438).

(A) DMC100438 does not bind to 293T cells that do not express Nectin4.  
(B) A clear peak shift of DMC100438 was seen compared to the control when incubated with Nectin4-expressing A431 cells, indicating strong binding of DMC100438 to Nectin4. Antibodies were incubated at 2 µg/mL.

