

**PRODUCT INFORMATION**

<b>Common Name</b>	MK-3475
<b>Conjugate</b>	Unconjugated
<b>Synonyms</b>	PDCD1;PD1;CD279;SLEB2
<b>Applications</b>	ELISA; Flow Cyt
<b>Endotoxin</b>	Less than 1.0 EU/ $\mu$ g by the LAL method. For <1 EU/mg requirements, please contact us for customization.
<b>Recommended Dilutions</b>	ELISA 1:5000-10000; Flow Cyt 1:100
<b>Formulation &amp; Reconstitution</b>	Lyophilized from sterile PBS, pH 7.4. Normally 5% - 8% trehalose is added as protectants before lyophilization. Please see Certificate of Analysis for specific instructions of reconstitution.
<b>Host Species</b>	Humanized
<b>IgG type</b>	Human IgG4 - Kappa
<b>Reactivity</b>	Human
<b>Target</b>	PD-1
<b>Uniprot ID</b>	Q15116
<b>Description</b>	Anti-PD-1 (pembrolizumab biosimilar) mAb
<b>Delivery</b>	In Stock
<b>Storage&amp;Shipping</b>	Store at -20°C to -80°C for 12 months in lyophilized form. After reconstitution, if not intended for use within a month, aliquot and store at -80°C (Avoid repeated freezing and thawing). Lyophilized proteins are shipped at ambient temperature.
<b>Background</b>	Research grade biosimilar. Not for use in therapeutic or diagnostic procedures for humans or animals.
<b>Usage</b>	Research use only



### Anti-PD1 (pembrolizumab biosimilar) mAb ELISA

0.2 µg of Human PD1, mFc-His Tagged protein per well

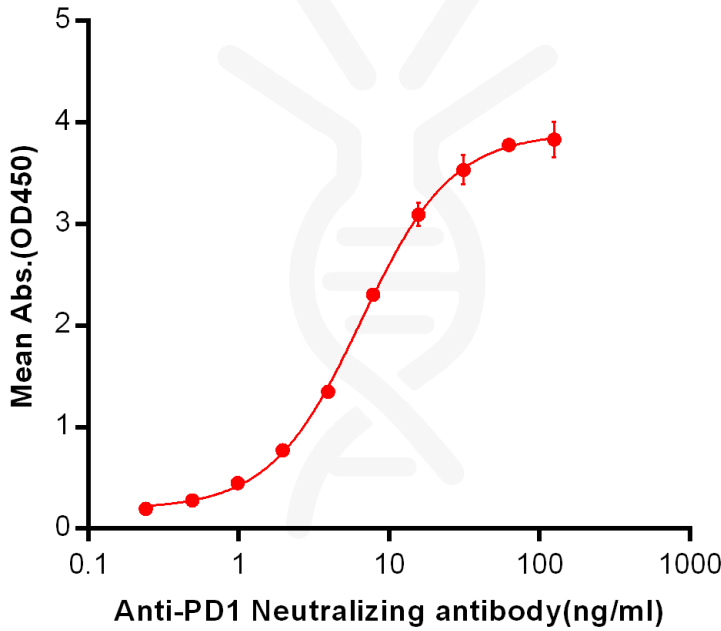


Figure 1 . ELISA plate pre-coated by 2 µg/ml (100 µl/well) Human PD1, mFc-His tagged protein PME100025 can bind Anti-PD-1 Neutralizing antibody in a linear range of 0.24-6.49 ng/ml.

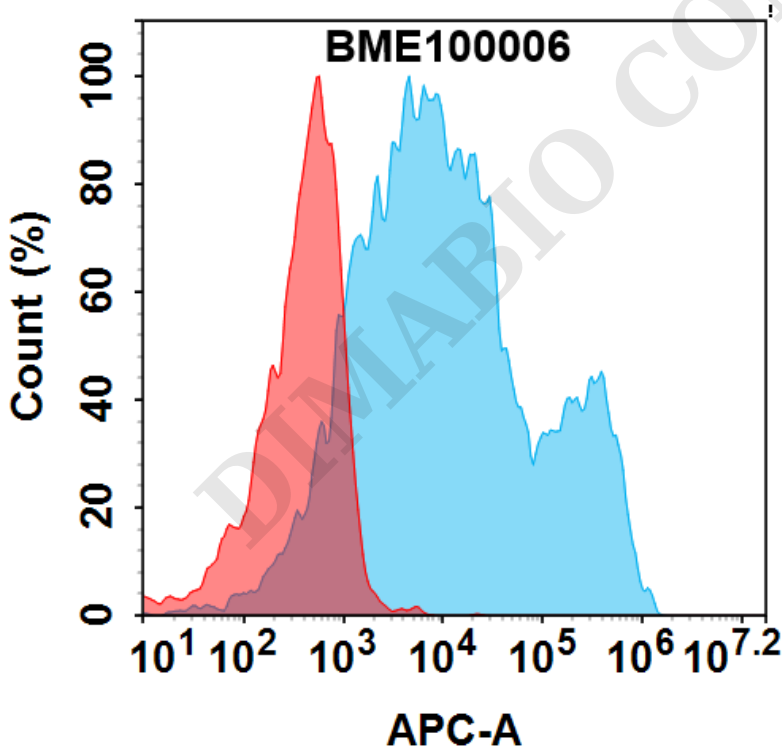


Figure 2. Flow cytometry analysis with 0.5µg/ml Anti-PD-1 (pembrolizumab biosimilar) mAb (BME100006) on HEK293 cells transfected with human PD-1 (Blue histogram) or HEK293 transfected with irrelevant protein (Red histogram).

