

PRODUCT INFORMATION

Common Name	ANB-030,ANB 030,ANB030
Conjugate	Unconjugated
Synonyms	PD1, PDCD1, CD279, SLEB2, hPD-1, hPD-I, hSLE1
Applications	ELISA, Flow Cyt
Recommended Dilutions	ELISA 1:5000-10000, Flow Cyt 1:100
Formulation & Reconstitution	Lyophilized from sterile PBS, pH 7.4. Normally 5 % - 8% trehalose is added as protectants before lyophilization. Please see Certificate of Analysis for specific instructions of reconstitution.
Host Species	Humanized
IgG type	Human IgG1(E356D,M358L) - kappa
Reactivity	Human
Target	PD-1
Uniprot ID	Q15116
Description	Anti-PD-1(rosnilimab biosimilar) mAb
Delivery	In Stock
Storage&Shipping	Store at -20°C to -80°C for 12 months in lyophilized form. After reconstitution, if not intended for use within a month, aliquot and store at -80°C (Avoid repeated freezing and thawing). Lyophilized antibodies are shipped at ambient temperature.
Background	Research grade biosimilar. Not for use in therapeutic or diagnostic procedures for humans or animals.
Usage	Research use only



**Anti-PD-1(rosnilimab biosimilar) mAb ELISA**

0.2  $\mu$ g of Human PD-1, mFc-His tagged protein per well

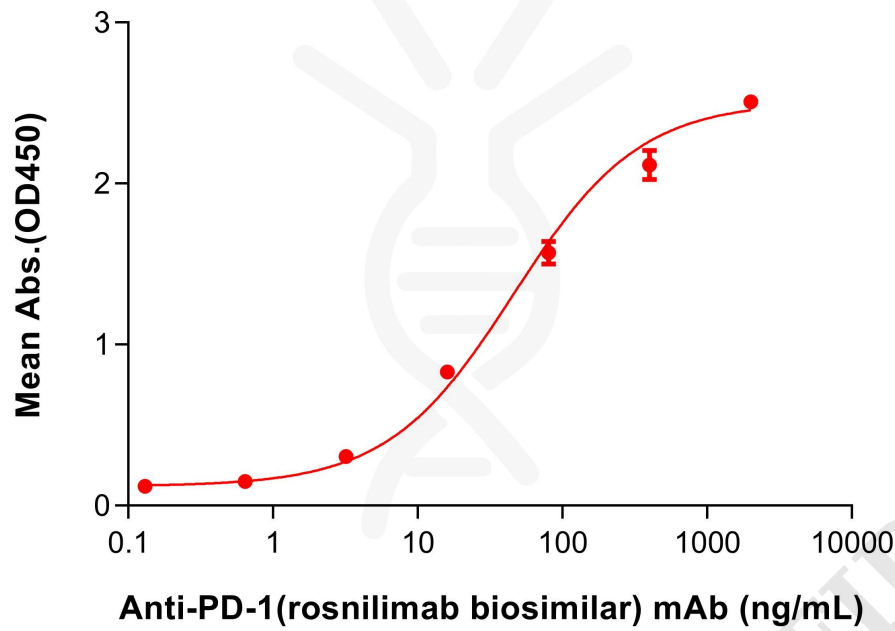


Figure 1. ELISA plate pre-coated by 2  $\mu$ g/mL (100  $\mu$ L/well) Human PD-1 Protein, mFc-His tag (PME100025) can bind Anti-PD-1(rosnilimab biosimilar) mAb (BME100657) in a linear range of 3.2–400 ng/mL.

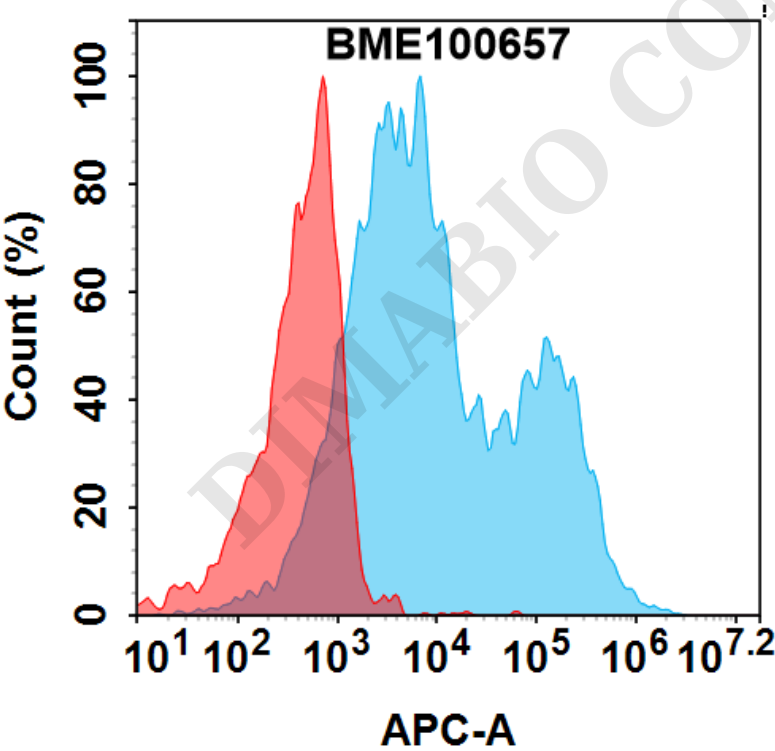


Figure 2. Flow cytometry analysis with 7.5 $\mu$ g/ml Anti-PD-1(rosnilimab biosimilar) mAb (BME100657) on HEK293 cells transfected with human PD-1 (Blue histogram) or HEK293 transfected with irrelevant protein (Red histogram).

