

**PRODUCT INFORMATION**

<b>Clone ID</b>	DMC462
<b>Target</b>	PRLR
<b>Synonyms</b>	Prolactin receptor; PRL-R
<b>Host Species</b>	Rabbit
<b>Description</b>	Anti-PRLR antibody(DMC462); IgG1 Chimeric mAb
<b>Delivery</b>	In Stock
<b>Uniprot ID</b>	P16471
<b>IgG type</b>	Rabbit/Human Fc chimeric IgG1
<b>Clonality</b>	Monoclonal
<b>Reactivity</b>	Human
<b>Applications</b>	Flow Cyt
<b>Recommended Dilutions</b>	Flow Cyt 1:100
<b>Purification</b>	Purified from cell culture supernatant by affinity chromatography
<b>Endotoxin</b>	Less than 1.0 EU/μg by the LAL method. For <1 EU/mg requirements, please contact us for customization.
<b>Formulation &amp; Reconstitution</b>	Lyophilized from sterile PBS, pH 7.4. Normally 5 % - 8% trehalose is added as protectants before lyophilization. Please see Certificate of Analysis for specific instructions of reconstitution.
<b>Storage&amp;Shipping</b>	Store at -20°C to -80°C for 12 months in lyophilized form. After reconstitution, if not intended for use within a month, aliquot and store at -80°C (Avoid repeated freezing and thawing). Lyophilized proteins are shipped at ambient temperature.
<b>Sterility</b>	Products are supplied non-sterile. For cell culture applications, dilute in appropriate medium and sterile-filter (0.22 μm) prior to use.
<b>Background</b>	This gene encodes a receptor for the anterior pituitary hormone; prolactin; and belongs to the type I cytokine receptor family. Prolactin-dependent signaling occurs as the result of ligand-induced dimerization of the prolactin receptor. Several alternatively spliced transcript variants encoding different membrane-bound and soluble isoforms have been described for this gene; which may function to modulate the endocrine and autocrine effects of prolactin in normal tissue and cancer. [provided by RefSeq; Feb 2011]
<b>Usage</b>	Research use only
<b>Conjugate</b>	Unconjugated
<b>DIMA Disclaimer</b>	All DIMA recombinant antibodies are genuinely generated by DIMA Biotech. They are all under patent application. Any protein sequencing or reverse engineering attempt is prohibited. We are actively scr



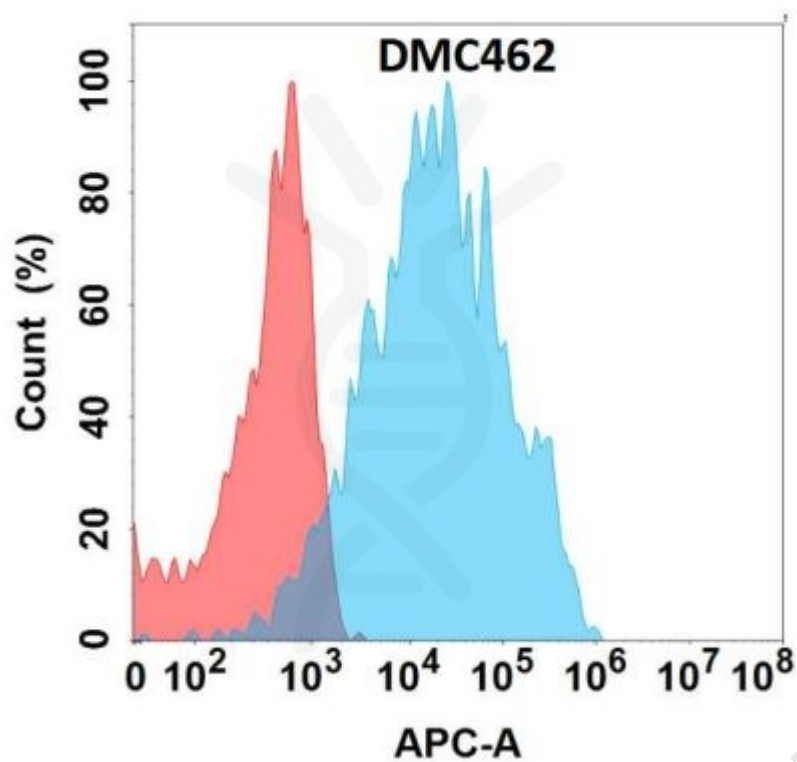


Figure 1. Flow cytometry analysis with Anti-PRLR (DMC462) on HEK293 cells transfected with human PRLR (Blue histogram) or HEK293 transfected with irrelevant protein (Red histogram).

