

PRODUCT INFORMATION

Clone ID	DM194
Target	SCF
Synonyms	DCUA; DFNA69;FPH2;FPHH; Kitl;KL-1;MGF;SCF; SF;SHEP7;SLF
Host Species	Rabbit
Description	Anti-SCF antibody(DM194); Rabbit mAb
Delivery	In Stock
Uniprot ID	P21583
IgG type	Rabbit IgG
Clonality	Monoclonal
Reactivity	Human
Applications	ELISA; Flow Cyt
Recommended Dilutions	ELISA 1:5000-10000; Flow Cyt 1:100
Purification	Purified from cell culture supernatant by affinity chromatography
Formulation & Reconstitution	Lyophilized from sterile PBS, pH 7.4. Normally 5 % - 8% trehalose is added as protectants before lyophilization. Please see Certificate of Analysis for specific instructions of reconstitution.
Storage&Shipping	Store at -20°C to -80°C for 12 months in lyophilized form. After reconstitution, if not intended for use within a month, aliquot and store at -80°C (Avoid repeated freezing and thawing). Lyophilized proteins are shipped at ambient temperature.
Background	This gene encodes the ligand of the tyrosine-kinase receptor encoded by the KIT locus. This ligand is a pleiotropic factor that acts in utero in germ cell and neural cell development; and hematopoiesis; all believed to reflect a role in cell migration. In adults; it functions pleiotropically; while mostly noted for its continued requirement in hematopoiesis. Two transcript variants encoding different isoforms have been found for this gene.
Usage	Research use only
Conjugate	Unconjugated
DIMA Disclaimer	All DIMA recombinant antibodies are genuinely generated by DIMA Biotech. They are all under patent application. Any protein sequencing or reverse engineering attempt is prohibited. We are actively scrutinizing all patent application to ensure no IP infringement.



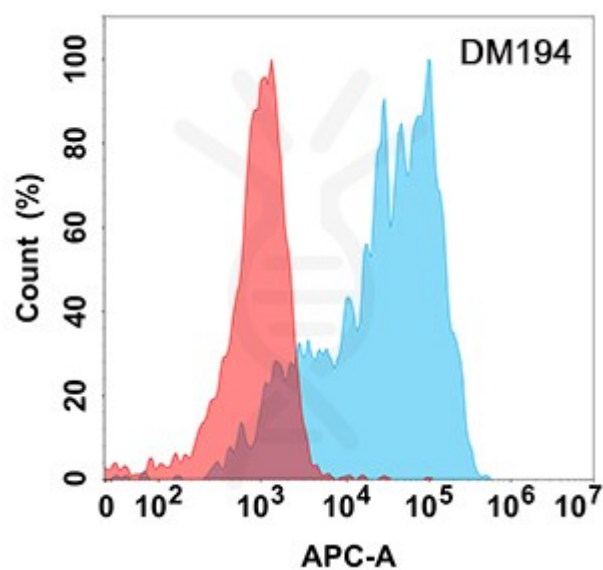


Figure 1. Flow cytometry analysis with Anti-SCF (DM194) on HEK293 cells transfected with human SCF (Blue histogram) or HEK293 transfected with irrelevant protein (Red histogram).

