

PRODUCT INFORMATION

Clone ID	DM150
Target	SELP
Synonyms	P-Selectin;CD62P;SELP;GMP-140
Host Species	Rabbit
Description	Anti-SELP antibody(DM150); Rabbit mAb
Delivery	In Stock
Uniprot ID	P16109
IgG type	Rabbit IgG
Clonality	Monoclonal
Reactivity	Human
Applications	ELISA; Flow Cyt
Recommended Dilutions	ELISA 1:5000-10000; Flow Cyt 1:100
Purification	Purified from cell culture supernatant by affinity chromatography
Formulation & Reconstitution	Lyophilized from sterile PBS, pH 7.4. Normally 5 % - 8% trehalose is added as protectants before lyophilization. Please see Certificate of Analysis for specific instructions of reconstitution.
Storage&Shipping	Store at -20°C to -80°C for 12 months in lyophilized form. After reconstitution, if not intended for use within a month, aliquot and store at -80°C (Avoid repeated freezing and thawing). Lyophilized proteins are shipped at ambient temperature.
Background	This gene encodes a 140 kDa protein that is stored in the alpha-granules of platelets and Weibel-Palade bodies of endothelial cells. This protein redistributes to the plasma membrane during platelet activation and degranulation and mediates the interaction of activated endothelial cells or platelets with leukocytes. The membrane protein is a calcium-dependent receptor that binds to sialylated forms of Lewis blood group carbohydrate antigens on neutrophils and monocytes. Alternative splice variants may occur but are not well documented.
Usage	Research use only
Conjugate	Unconjugated
DIMA Disclaimer	All DIMA recombinant antibodies are genuinely generated by DIMA Biotech. They are all under patent application. Any protein sequencing or reverse engineering attempt is prohibited. We are actively scrutinizing all patent application to ensure no IP infringement.



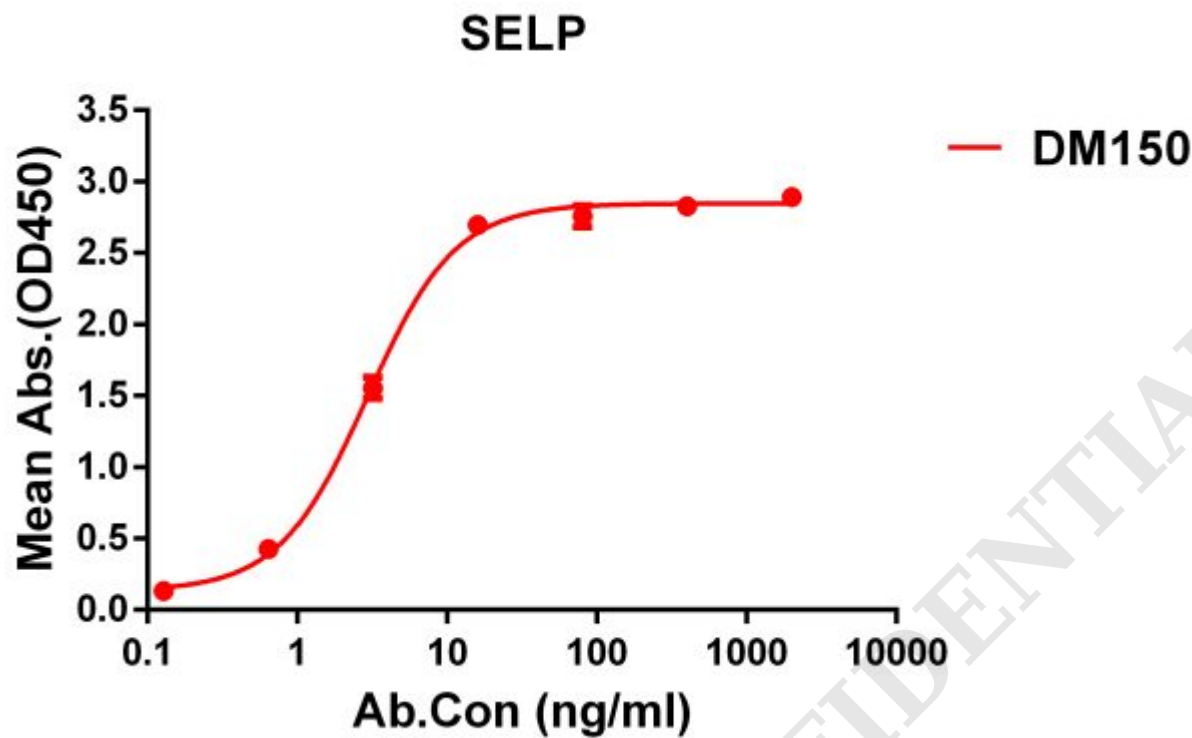


Figure 1. ELISA plate pre-coated by 1 μ g/ml (100 μ l/well) Human SELP protein, hFc tagged protein ([getskuurl sku="PME100087"]) can bind Rabbit anti-SELP monoclonal antibody(**clone: DM150**) in a linear range of 1-10 ng/ml.

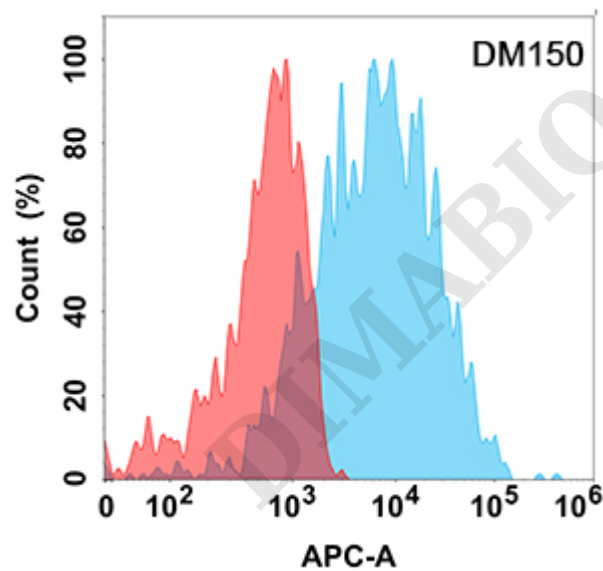


Figure 2. Flow cytometry analysis with Anti-SELP (DM150) on HEK293 cells transfected with human SELP (Blue histogram) or HEK293 transfected with irrelevant protein (Red histogram).

