

**PRODUCT INFORMATION**

<b>Clone ID</b>	15F4
<b>Target</b>	SEZ6
<b>Synonyms</b>	BSRPC
<b>Host Species</b>	Rabbit
<b>Description</b>	Anti-SEZ6 antibody(15F4), IgG1 Chimeric mAb
<b>Delivery</b>	In Stock
<b>Uniprot ID</b>	Q53EL9
<b>IgG type</b>	Rabbit/Human Fc chimeric IgG1
<b>Clonality</b>	Monoclonal
<b>Reactivity</b>	Human
<b>Applications</b>	Flow Cyt
<b>Recommended Dilutions</b>	Flow Cyt 1/100
<b>Purification</b>	Purified from cell culture supernatant by affinity chromatography
<b>Endotoxin</b>	Less than 1.0 EU/ $\mu$ g by the LAL method. For <1 EU/mg requirements, please contact us for customization.
<b>Formulation &amp; Reconstitution</b>	Lyophilized from sterile PBS, pH 7.4. Normally 5% - 8% trehalose is added as protectants before lyophilization. Please see Certificate of Analysis for specific instructions of reconstitution.
<b>Storage&amp;Shipping</b>	Store at -20°C to -80°C for 12 months in lyophilized form. After reconstitution, if not intended for use within a month, aliquot and store at -80°C (Avoid repeated freezing and thawing).
<b>Sterility</b>	Products are supplied non-sterile. For cell culture applications, dilute in appropriate medium and sterile-filter (0.22 $\mu$ m) prior to use.
<b>Background</b>	The protein encoded by this gene is thought to contain five cysteine-rich motifs that are similar to sushi domains, as well as two domains similar to the amino terminal half of the CUB (for complement C1r/C1s, Uegf, Bmp1) domain. Mutations in this gene have been associated with febrile seizures. [provided by RefSeq, Jul 2016]
<b>Usage</b>	Research use only
<b>Conjugate</b>	Unconjugated



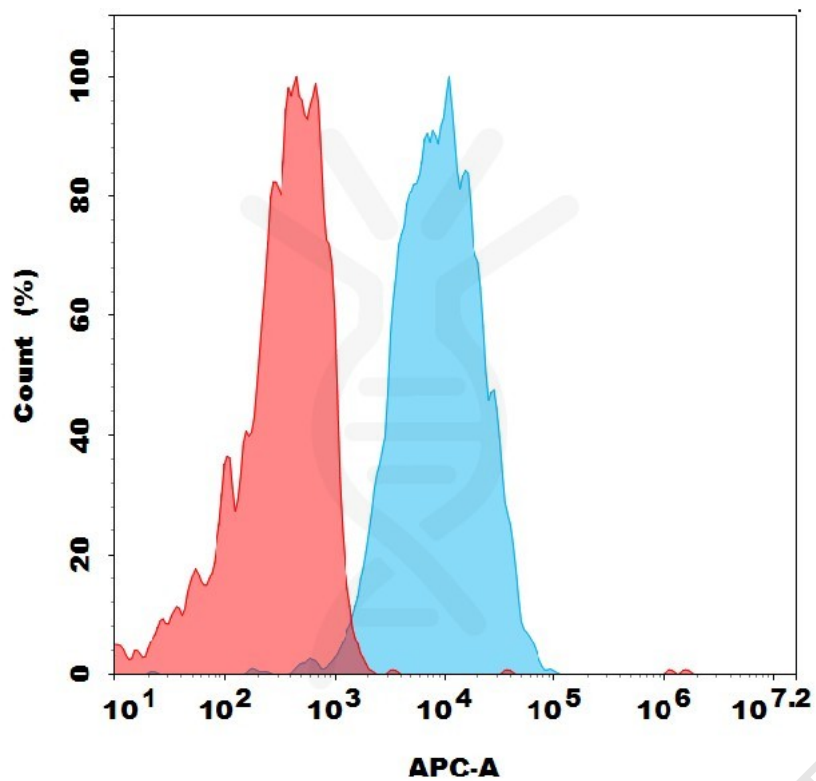


Figure 1. Flow cytometry analysis with 10µg/mL Anti-SEZ6 (15F4) mAb on K562-SEZ6 cells.

DIMABIO CONFIDENTIAL

