

PRODUCT INFORMATION

Common Name	PYX-106, BSI-060T, BSI060T
Conjugate	Unconjugated
Synonyms	SIG15; Siglec-15; CD33L3
Applications	Flow Cyt
Endotoxin	Less than 1.0 EU/μg by the LAL method. For <1 EU/mg requirements, please contact us for customization.
Recommended Dilutions	Flow Cyt 1:100
Formulation & Reconstitution	Lyophilized from sterile PBS, pH 7.4. Normally 5% - 8% trehalose is added as protectants before lyophilization. Please see Certificate of Analysis for specific instructions of reconstitution.
Host Species	Homo sapiens
IgG type	Human IgG1(E356D,M358L) - kappa
Reactivity	Human
Target	SIGLEC15
Uniprot ID	Q6ZMC9
Description	Anti-SIGLEC15(aldastotug biosimilar) mAb
Delivery	In Stock
Storage&Shipping	Store at -20°C to -80°C for 12 months in lyophilized form. After reconstitution, if not intended for use within a month, aliquot and store at -80°C (Avoid repeated freezing and thawing). Lyophilized antibodies are shipped at ambient temperature.
Sterility	Products are supplied non-sterile. For cell culture applications, dilute in appropriate medium and sterile-filter (0.22 μm) prior to use.
Background	Research grade biosimilar. Not for use in therapeutic or diagnostic procedures for humans or animals.
Usage	Research use only



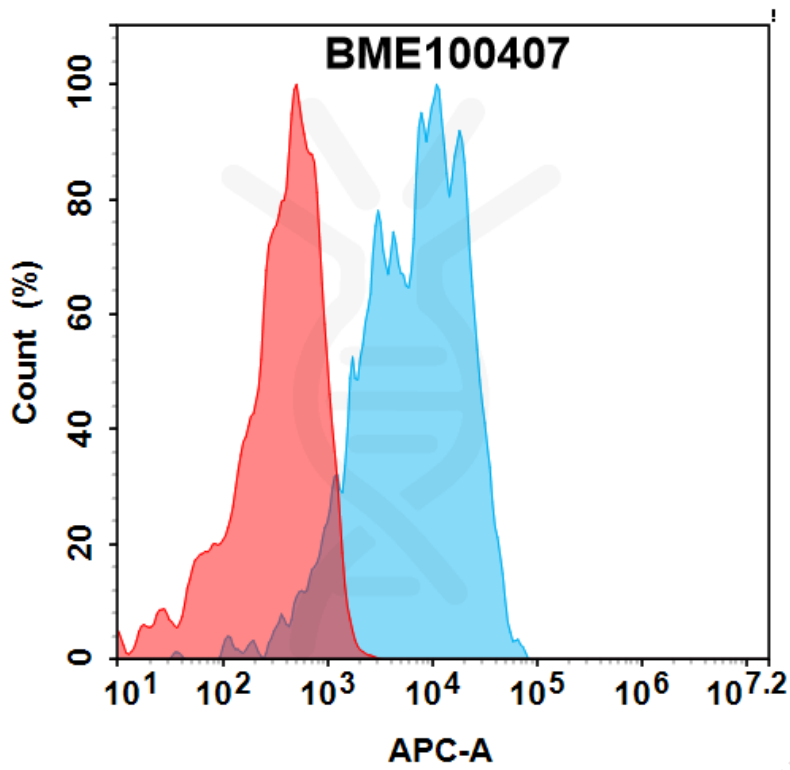


Figure 1. Flow cytometry analysis with 0.5 µg/ml Anti-SIGLEC15(aldastotug biosimilar) mAb (BME100407) on HEK293 cells transfected with human SIGLEC15 (Blue histogram) or HEK293 transfected with irrelevant protein (Red histogram).

