

PRODUCT INFORMATION

| | |
|------------------------------|---|
| Common Name | G3D2 |
| Conjugate | Unconjugated |
| Synonyms | TNFRSF13B |
| Applications | ELISA, Flow Cyt |
| Recommended Dilutions | ELISA 1:5000-10000, Flow Cyt 1:100 |
| Formulation & Reconstitution | Lyophilized from sterile PBS, pH 7.4. Normally 5 % - 8% trehalose is added as protectants before lyophilization. Please see Certificate of Analysis for specific instructions of reconstitution. |
| Host Species | Chimeric |
| IgG type | Human IgG1 - kappa |
| Reactivity | Human |
| Target | TACI |
| Uniprot ID | O14836 |
| Description | Anti-TACI(G3D2 biosimilar) mAb |
| Delivery | In Stock |
| Storage & Shipping | Store at -20°C to -80°C for 12 months in lyophilized form. After reconstitution, if not intended for use within a month, aliquot and store at -80°C (Avoid repeated freezing and thawing). Lyophilized antibodies are shipped at ambient temperature. |
| Background | Research grade biosimilar. Not for use in therapeutic or diagnostic procedures for humans or animals. |
| Usage | Research use only |



Anti-TACI (G3D2 biosimilar) mAb ELISA
0.2 μ g of Human TACI, hFc tagged protein per well

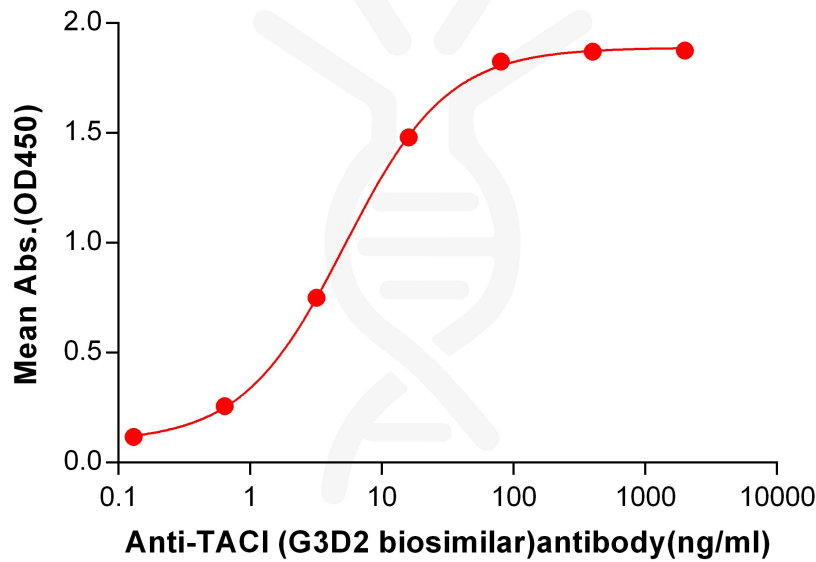


Figure 1. ELISA plate pre-coated by 2 μ g/mL (100 μ L/well) Human TACI Protein, hFc Tag (PME100094) can bind Anti-TACI(G3D2 biosimilar) mAb (BME100276) in a linear range of 0.64–80 ng/mL. In order to specifically detect BME100276, mouse anti-human Fab-specific antibody was used as detection antibody.

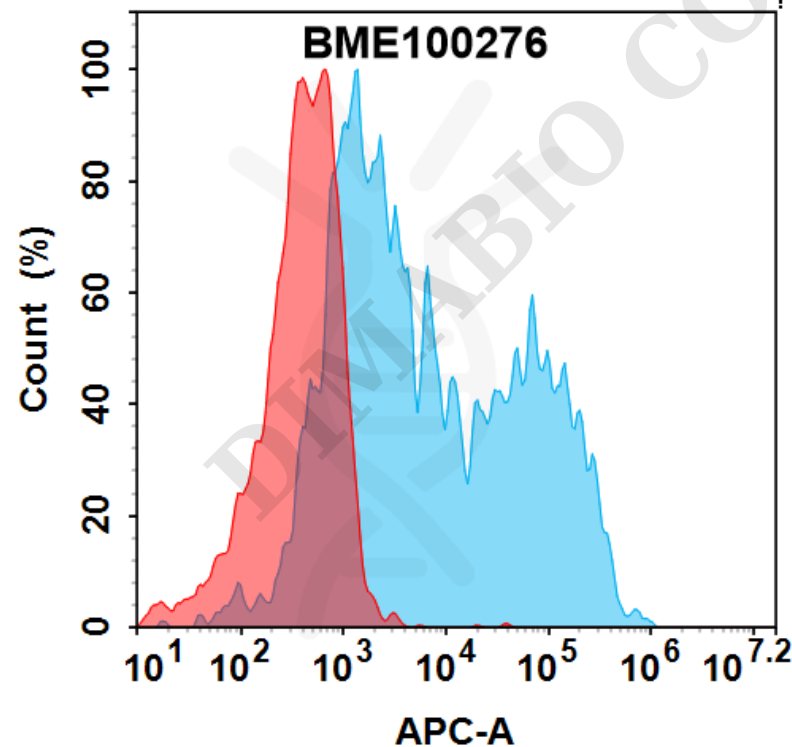


Figure 2. Flow cytometry analysis with 7.5 μ g/ml Anti-TACI(G3D2 biosimilar) mAb (BME100276) on HEK293 cells transfected with Human TACI protein (Blue histogram) or HEK293 transfected with irrelevant protein (Red histogram).

