

PRODUCT INFORMATION

Clone ID	OT12H2 (formerly 2H2)
Target	tdTomato
Synonyms	N/A
Host Species	Mouse
Description	Carrier-free (BSA/glycerol-free) Mouse monoclonal tdTomato antibody, clone OT12H2
Delivery	3-4week
Uniprot ID	N/A
IgG type	IgG2b
Clonality	Monoclonal
Reactivity	N/A
Applications	WB
Recommended Dilutions	WB: 1:2000
Purification	N/A
Endotoxin	Less than 1.0 EU/ μ g by the LAL method. For <1 EU/mg requirements, please contact us for customization.
Formulation & Reconstitution	Lyophilized powder (original buffer 1X PBS, pH 7.3, 8% trehalose)
Storage&Shipping	Store at -20°C.
Background	N/A
Usage	Research use only
Conjugate	Unconjugated

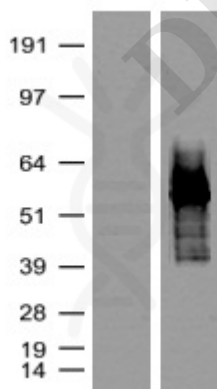


Figure 1. HEK293T cells were transfected with the pCMV6-ENTRY control (Left lane) or pCMV6-ENTRY tdTomato (Right lane) cDNA for 48 hrs and lysed. Equivalent amounts of cell lysates (5 μ g per lane) were separated by SDS-PAGE and immunoblotted with anti-tdTomato (DME900016, 1:2000).

