

PRODUCT INFORMATION

Clone ID	DMC467
Target	TGFBR2
Synonyms	AAT3; FAA3; LDS1B; LDS2; LDS2B; MFS2; RIIC; TAAD2; TBR-ii; TBRll; TGFbeta-Rll; TGFR-2
Host Species	Rabbit
Description	Anti-TGFBR2 antibody(DMC467); IgG1 Chimeric mAb
Delivery	In Stock
Uniprot ID	P37173
IgG type	Rabbit/Human Fc chimeric IgG1
Clonality	Monoclonal
Reactivity	Human
Applications	Flow Cyt
Recommended Dilutions	Flow Cyt 1:100
Purification	Purified from cell culture supernatant by affinity chromatography
Formulation & Reconstitution	Lyophilized from sterile PBS, pH 7.4. Normally 5 % - 8% trehalose is added as protectants before lyophilization. Please see Certificate of Analysis for specific instructions of reconstitution.
Storage & Shipping	Store at -20°C to -80°C for 12 months in lyophilized form. After reconstitution, if not intended for use within a month, aliquot and store at -80°C (Avoid repeated freezing and thawing). Lyophilized proteins are shipped at ambient temperature.
Background	The protein encoded by this gene is a transmembrane protein that has a protein kinase domain; forms a heterodimeric complex with TGF-beta receptor type-1; and binds TGF-beta. This receptor:ligand complex phosphorylates proteins; which then enter the nucleus and regulate the transcription of genes related to cell proliferation; cell cycle arrest; wound healing; immunosuppression; and tumorigenesis. Mutations in this gene have been associated with Marfan Syndrome; Loeys-Deitz Aortic Aneurysm Syndrome; and the development of various types of tumors. Alternatively spliced transcript variants encoding different isoforms have been characterized. [provided by RefSeq; Aug 2017]
Usage	Research use only



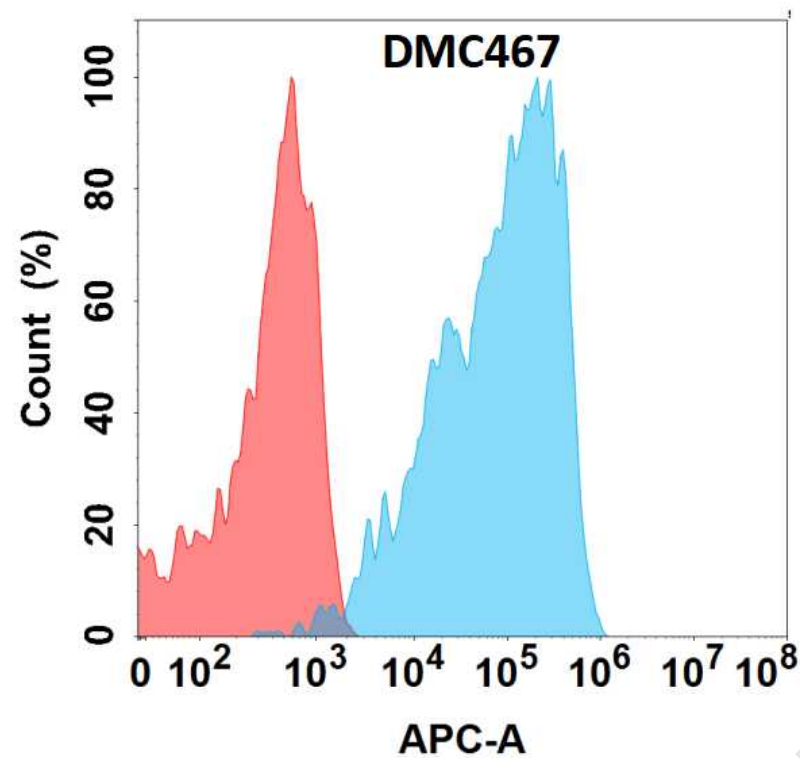


Figure 1. Flow cytometry analysis with Anti-TGFR2 (DMC467) on Expi293 cells transfected with human TGFR2 (Blue histogram) or Expi293 transfected with irrelevant protein (Red histogram).

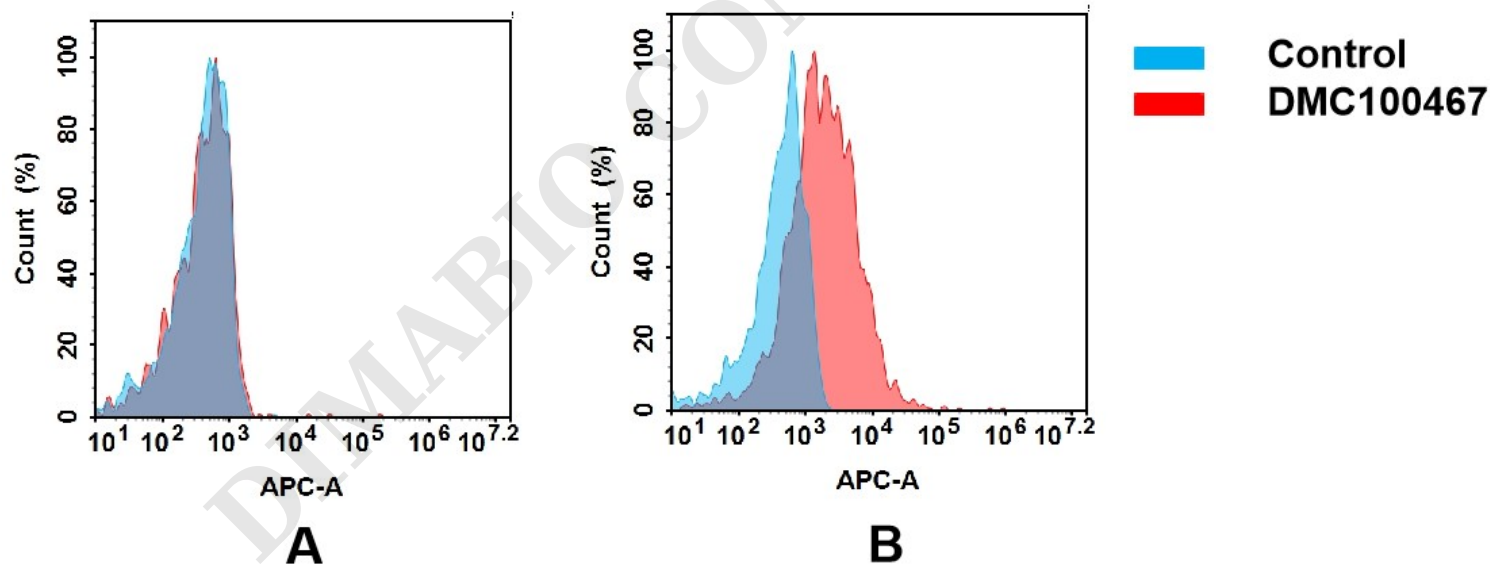


Figure 2. Flow cytometry analysis of antigen binding of anti-human TGFR2 mAb(DMC100467).  
(A) DMC100467 does not bind to CHO-S cells that do not express TGFR2.  
(B) A clear peak shift of DMC100467 was seen compared to the control when incubated with TGFR2-expressing hepG2 cells, indicating strong binding of DMC100467 to TGFR2. Antibodies were incubated at 5 µg/ml.

