

PRODUCT INFORMATION

Common Name	IMC TR1, LY-3022859, LY3022859
Synonyms	TGFR2, TGFR-2
Conjugate	Unconjugated
Applications	ELISA □ Flow Cyt
Recommended Dilutions	ELISA 1:5000-10000 □ Flow Cyt 1:100
Endotoxin	Less than 1.0 EU/μg by the LAL method. For <1 EU/mg requirements, please contact us for customization.
Formulation & Reconstitution	Lyophilized from sterile PBS, pH 7.4. Normally 5% - 8% trehalose is added as protectants before lyophilization. Please see Certificate of Analysis for specific instructions of reconstitution.
Host Species	Humanized
IgG type	Human IgG1(L234A,L235A,G237A) - Kappa
Reactivity	Human
Target	TGFBR2
Uniprot ID	P37173
Description	Anti-TGFBR2(LY3022859 biosimilar) mAb
Delivery	In Stock
Storage & Shipping	Store at -20°C to -80°C for 12 months in lyophilized form. After reconstitution, if not intended for use within a month, aliquot and store at -80°C (Avoid repeated freezing and thawing). Lyophilized antibodies are shipped at ambient temperature.
Sterility	Products are supplied non-sterile. For cell culture applications, dilute in appropriate medium and sterile-filter (0.22 μm) prior to use.
Background	Research grade biosimilar. Not for use in therapeutic or diagnostic procedures for humans or animals.
Usage	Research use only



Anti-TGFBR2(LY3022859 biosimilar) mAb ELISA

0.2 µg of Human TGFBR2, hFc tagged Protein per well

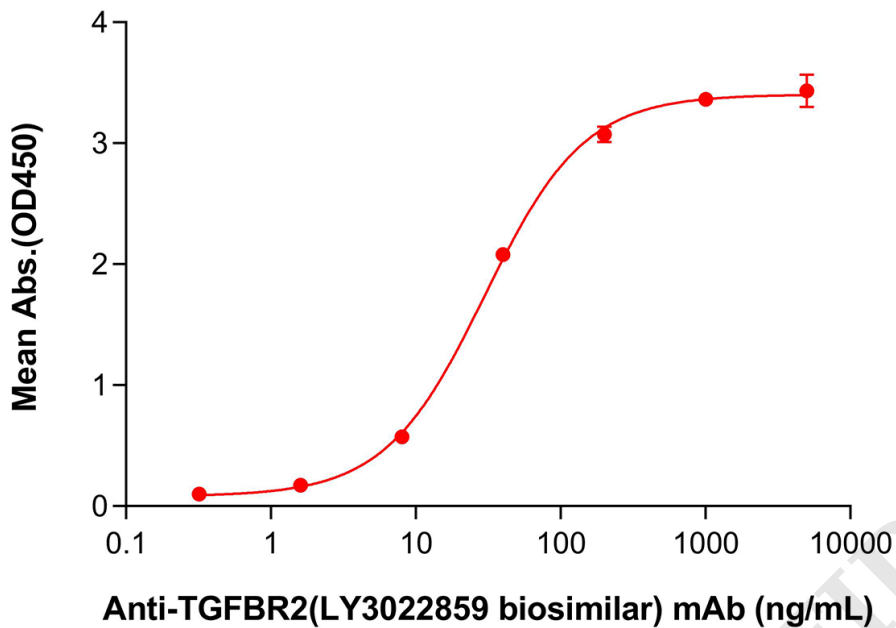


Figure 1. ELISA plate pre-coated by 2 µg/mL (100 µL/well) Human TGFBR2 Protein, hFc Tag (PME101017) can bind Anti-TGFBR2(LY3022859 biosimilar) mAb (BME100302) in a linear range of 8-40 ng/mL. In order to specifically detect BME100302, HRP Conjugated- Goat anti Human Fab was used as detection antibody.

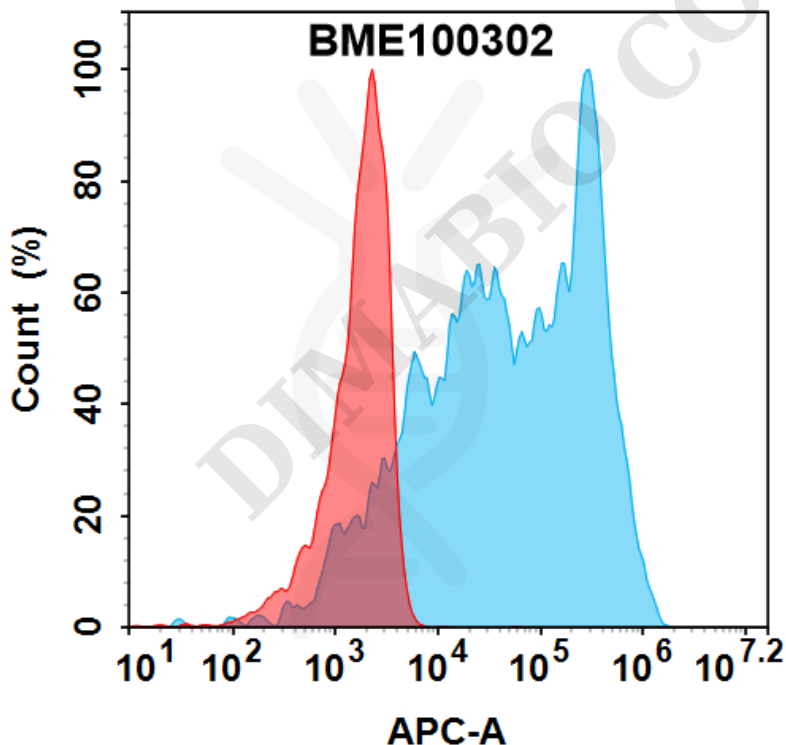


Figure 2. Flow cytometry analysis with 0.5 µg/ml Anti-TGFBR2(LY3022859 biosimilar) mAb (BME100302) on HEK293 cells transfected with Human TGFBR2 protein (Blue histogram) and HEK293 transfected with irrelevant protein (Red histogram) .

