

PRODUCT INFORMATION

| | |
|------------------------------|--|
| Common Name | MBG-453 |
| Conjugate | Unconjugated |
| Synonyms | HAVCR2, TIMD3 |
| Applications | ELISA, Flow Cyt |
| Recommended Dilutions | ELISA 1:5000-10000, Flow Cyt 1:100 |
| Formulation & Reconstitution | Lyophilized from sterile PBS, pH 7.4. Normally 5 % - 8% trehalose is added as protectants before lyophilization. Please see Certificate of Analysis for specific instructions. |
| Host Species | Humanized |
| IgG type | Human IgG4 - Kappa |
| Reactivity | Human |
| Target | TIM3 |
| Uniprot ID | Q8TDQ0 |
| Description | Anti-TIM3(sabatolimab biosimilar) mAb |
| Delivery | In Stock |
| Storage&Shipping | Store at -20°C to -80°C for 12 months in lyophilized form. After reconstitution, if not intended for use within a month, aliquot and store at -80°C (Avoid repeated freezing and thawing).Lyophilized antibodies are shipped at ambient temperature. |
| Background | Research grade biosimilar. Not for use in therapeutic or diagnostic procedures for humans or animals. |
| Usage | Research use only |



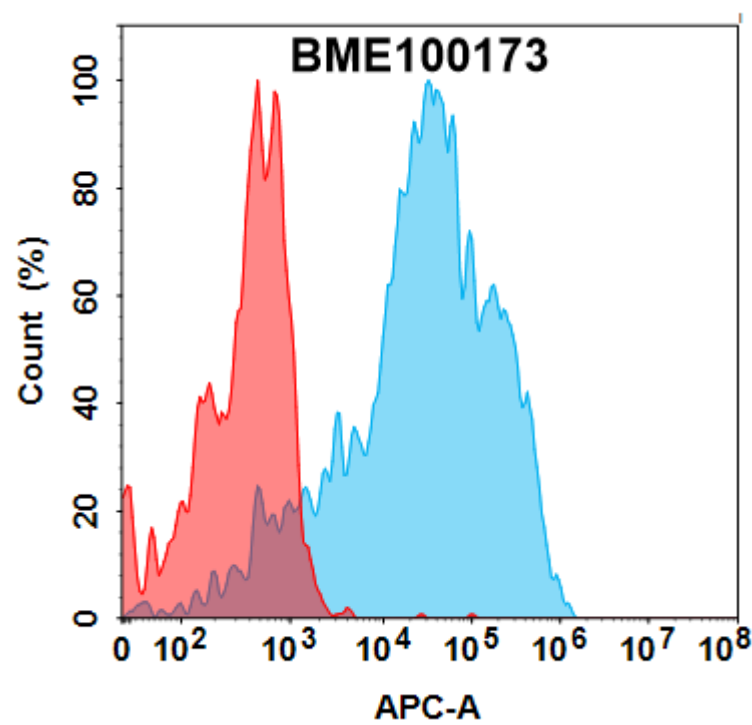


Figure 1. Flow cytometry analysis with 1µg/mL Anti-TIM3(sabatolimab biosimilar) mAb (BME100173) on HEK293 cells transfected with Human TIM3 protein (Blue histogram) or HEK293 transfected with irrelevant protein (Red histogram).

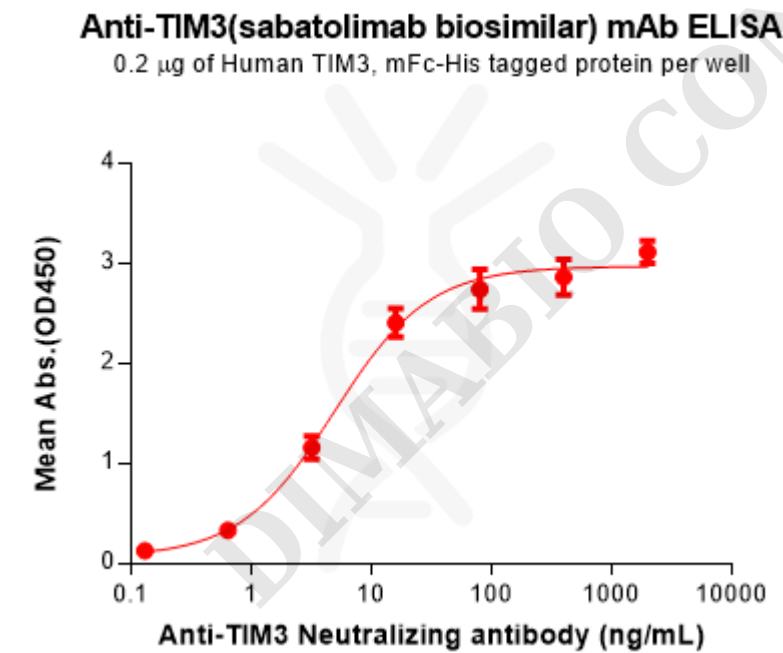


Figure 2. ELISA plate pre-coated by 2 µg/mL (100 µL/well) Human TIM3 Protein, mFc-His Tag(PME100030) can bind Anti-TIM3 (sabotolimab biosimilar) mAb(BME100173) in a linear range of 0.64-16 ng/mL.

