

PRODUCT INFORMATION

| | |
|------------------------------|--|
| Common Name | PF 6480605,PF-6480605,RVT-3101,1D1-1.31,afimkibart |
| Conjugate | Unconjugated |
| Synonyms | TL1;VEGI |
| Applications | ELISA, Flow Cyt |
| Recommended Dilutions | ELISA 1:5000-10000, Flow Cyt 1:100 |
| Formulation & Reconstitution | Lyophilized from sterile PBS, pH 7.4. Normally 5 % - 8% trehalose is added as protectants before lyophilization. Please see Certificate of Analysis for specific instructions of reconstitution. |
| Host Species | Humanized |
| IgG type | Human IgG1(L234A,L235A,G237A) - Kappa |
| Reactivity | Human |
| Target | TNFSF15 |
| Uniprot ID | O95150 |
| Description | Anti-TNFSF15(PF-06480605 biosimilar) mAb |
| Delivery | In Stock |
| Storage & Shipping | Store at -20°C to -80°C for 12 months in lyophilized form. After reconstitution, if not intended for use within a month, aliquot and store at -80°C (Avoid repeated freezing and thawing). Lyophilized antibodies are shipped at ambient temperature. |
| Background | Research grade biosimilar. Not for use in therapeutic or diagnostic procedures for humans or animals. |
| Usage | Research use only |
| DIMA Disclaimer | All DIMA recombinant antibodies are genuinely generated by DIMA Biotech. They are all under patent application. Any protein sequencing or reverse engineering attempt is prohibited. We are actively scrutinizing all patent application to ensure no IP infringement. |



Anti-TNFSF15(PF-06480605 biosimilar) mAb ELISA
0.2 µg of Human TNFSF15, hFc tagged protein per well

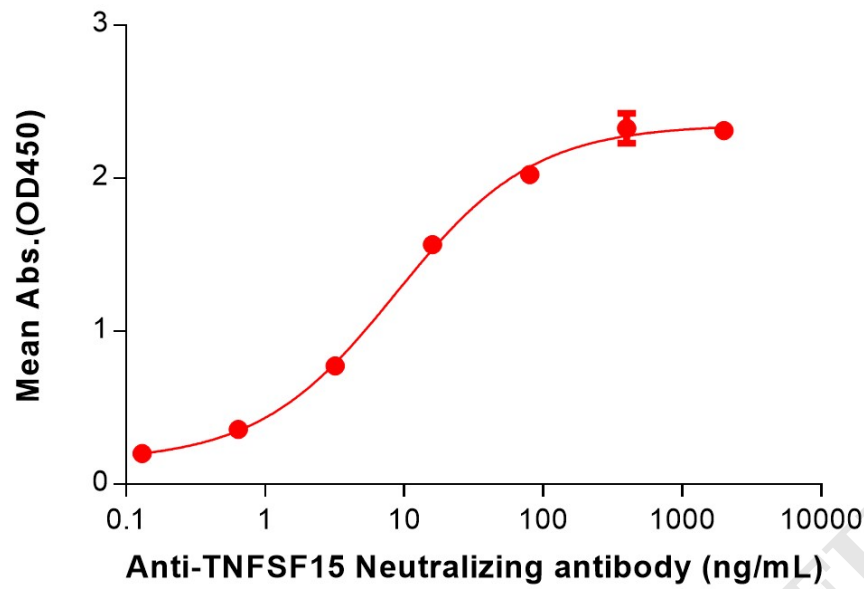


Figure 1. ELISA plate pre-coated by 2 µg/mL (100 µL/well) Human TNFSF15 Protein, hFc Tag (PME100752) can bind Anti-TNFSF15(PF-06480605 biosimilar) mAb (BME100222) in a linear range of 0.64-80 ng/mL. In order to specifically detect BME100222, mouse anti-human Fab-specific antibody was used as detection antibody.

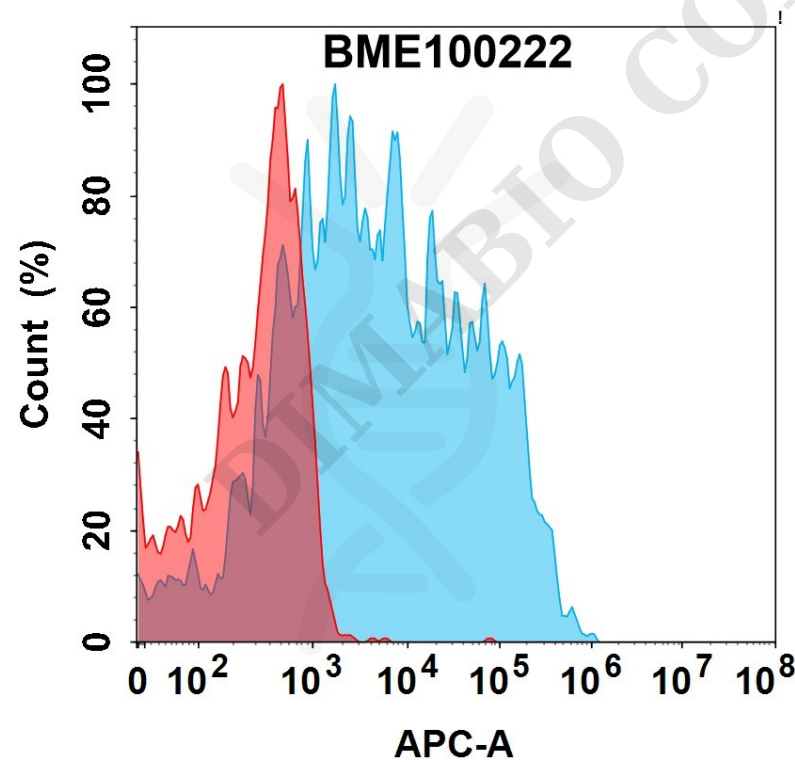


Figure 2. Flow cytometry analysis with 15µg/mL Anti-TNFSF15(PF-06480605 biosimilar) mAb (BME100222) on HEK293 cells transfected with Human TNFSF15 protein (Blue histogram) or HEK293 transfected with irrelevant protein (Red histogram).

