

PRODUCT INFORMATION

Clone ID	OTI10F11 (formerly 10F11)
Target	tYFP
Synonyms	N/A
Host Species	Mouse
Description	Mouse monoclonal turboYFP antibody, clone OTI10F11
Delivery	1-2week
Uniprot ID	N/A
IgG type	IgG1
Clonality	Monoclonal
Reactivity	N/A
Applications	WB IF FC
Recommended Dilutions	WB: 1:2000, IF: 1:50, FC: 1:400
Purification	N/A
Endotoxin	Less than 1.0 EU/ μ g by the LAL method. For <1 EU/mg requirements, please contact us for customization.
Formulation & Reconstitution	PBS (pH 7.3) containing 1% BSA, 50% glycerol and 0.02% sodium azide.
Storage&Shipping	Store at -20°C.
Background	N/A
Usage	Research use only
Conjugate	Unconjugated

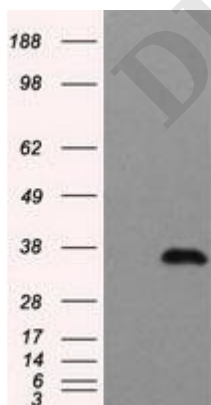


Figure 1. HEK293T cells were transfected with the pCMV6-ENTRY control (left lane) or pCMV6-ENTRY tYFP (right lane) cDNA for 48 hrs and lysed. Equivalent amounts of cell lysates (5 μ g per lane) were separated by SDS-PAGE and immunoblotted with anti-tYFP (DME900003).



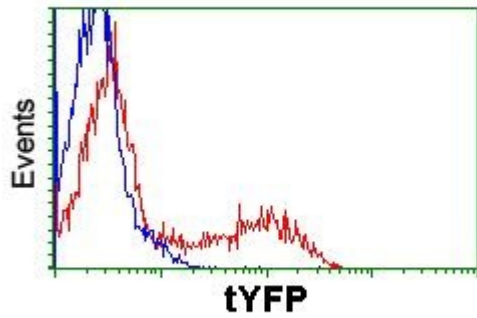


Figure 2. HEK293T cells transfected with either pCMV6-ENTRY tYFP (pCMV6-tYFP) (Red) or empty vector control plasmid (Blue) were immunostained with anti-tYFP mouse monoclonal antibody (DME900003), and then analyzed by flow cytometry.

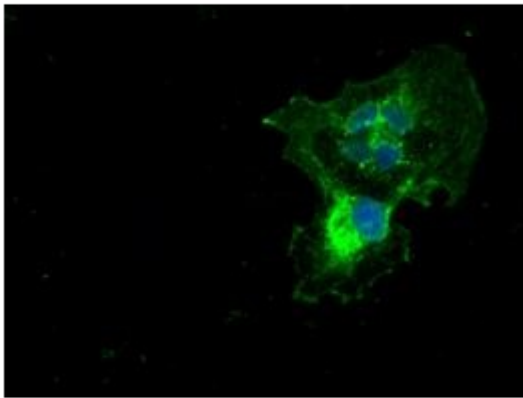


Figure 3. Anti-tYFP mouse monoclonal antibody (DME900003) immunofluorescent staining of COS7 cells transiently transfected by pCMV6-ENTRY tYFP (pCMV6-tYFP).

