

PRODUCT INFORMATION

| | |
|---|---|
| Common Name | LymphoStat-B, hBlySmAb-1.1 |
| Conjugate | Biotinylated |
| Synonyms | TNFSF13B;BAFF;BLYS;CD257;DTL;TALL1;THANK;TNFSF20;ZTNF4;TALL-1 |
| Applications | ELISA; Flow Cyt |
| Endotoxin | Less than 1.0 EU/μg by the LAL method. For <1 EU/mg requirements, please contact us for customization. |
| Recommended Dilutions | ELISA 1:5000-10000; Flow Cyt 1μg/ml |
| Formulation & Reconstitution | Lyophilized from sterile PBS, pH 7.4. Normally 5 % - 8% trehalose is added as protectants before lyophilization. Please see Certificate of Analysis for specific instructions of reconstitution. |
| Host Species | Homo sapiens |
| IgG type | Human IgG1 - Lambda2 |
| Reactivity | Human |
| Target | BAFF |
| Uniprot ID | Q9Y275 |
| Description | Biotinylated Anti-BAFF (belimumab biosimilar) mAb |
| Delivery | In Stock |
| Storage&Shipping | Store at -20°C to -80°C for 12 months in lyophilized form. After reconstitution, if not intended for use within a month, aliquot and store at -80°C (Avoid repeated freezing and thawing). Lyophilized proteins are shipped at ambient temperature. |
| Sterility | Products are supplied non-sterile. For cell culture applications, dilute in appropriate medium and sterile-filter (0.22 μm) prior to use. |
| Background | Research grade biosimilar. Not for use in therapeutic or diagnostic procedures for humans or animals. |
| Usage | Research use only |



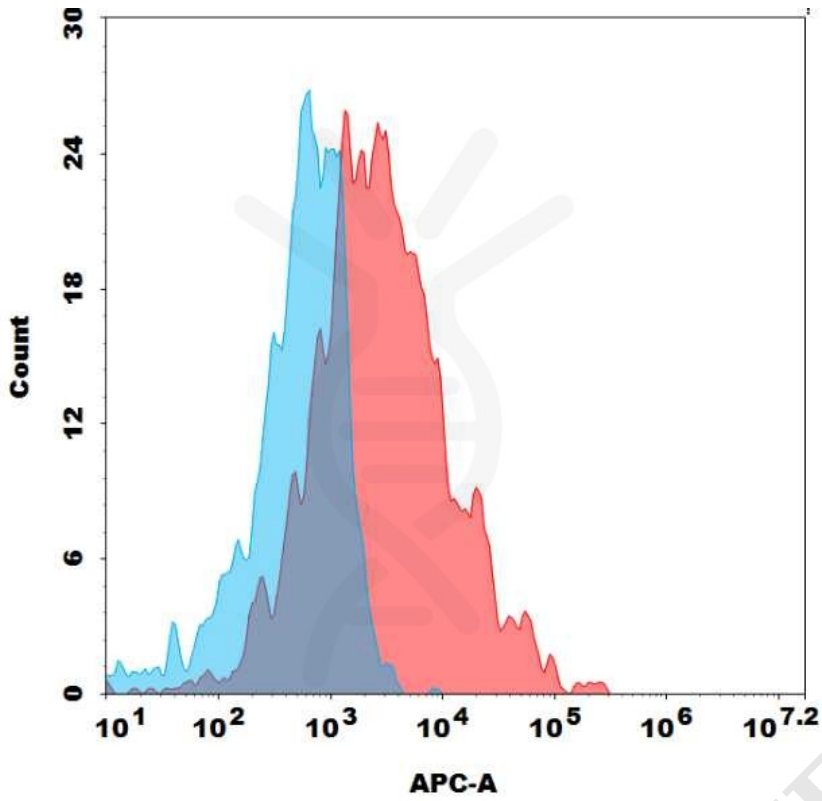


Figure 1. Flow cytometry analysis with 1µg/ml Biotinylated Anti-BAFF (belimumab biosimilar) mAb on Expi293 cells transfected with Human BAFF protein (Blue histogram) or Expi293 transfected with irrelevant protein (Red histogram).

