

PRODUCT INFORMATION

Common Name	LAG-3,CD223
Conjugate	Biotinylated
Synonyms	BMS-986016;ONO-4482
Applications	ELISA
Recommended Dilutions	ELISA 1:5000-10000
Formulation & Reconstitution	Lyophilized from sterile PBS, pH 7.4. Normally 5 % - 8% trehalose is added as protectants before lyophilization. Please see Certificate of Analysis for specific instructions of reconstitution.
Host Species	Homo sapiens
IgG type	Human IgG4 - Kappa
Reactivity	Human
Target	LAG3
Uniprot ID	P18627
Description	Biotinylated Anti-LAG3 (relatlimab biosimilar)mAb
Delivery	In Stock
Storage&Shipping	Store at -20°C to -80°C for 12 months in lyophilized form. After reconstitution, if not intended for use within a month, aliquot and store at -80°C (Avoid repeated freezing and thawing). Lyophilized proteins are shipped at ambient temperature.
Background	Research grade biosimilar. Not for use in therapeutic or diagnostic procedures for humans or animals.
Usage	Research use only



Biotinylated Anti-LAG3 (relatlimab biosimilar) mAb ELISA

0.2 µg of Human LAG3, His tagged protein per well

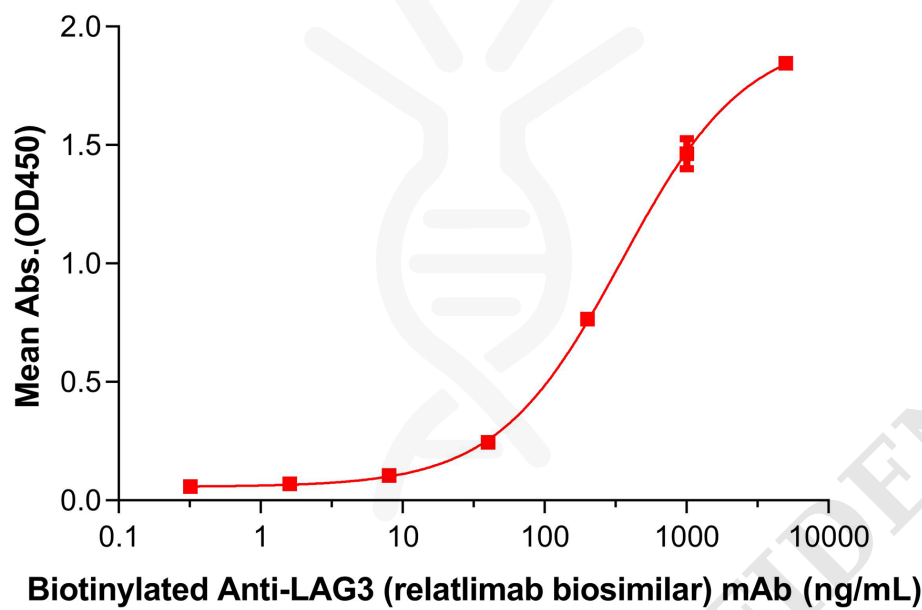


Figure 1. ELISA plate pre-coated by 2 µg/mL (100 µL/well) Human LAG3 Protein, His Tag (PME100512) can bind Biotinylated Anti-LAG3 (relatlimab biosimilar) mAb (BME100062B) in a linear range of 200-1000 ng/mL.

