

PRODUCT INFORMATION

Common Name	BMS-936558;BMS936558;BMS 936558;MDX-1106;MDX1106;MDX 1106;ONO-4538;ONO4538;ONO 4538;OPDIVO;OPDUALAG (combination of Nivolumab and Relatlimab)
Conjugate	Biotinylated
Synonyms	PD1;PD-1;CD279;SLEB2;hPD-1;hPD-l;hSLE1
Applications	ELISA
Recommended Dilutions	ELISA 1:5000-10000
Delivery	In Stock
Formulation & Reconstitution	Lyophilized from sterile PBS, pH 7.4. Normally 5 % - 8% trehalose is added as protectants before lyophilization. Please see Certificate of Analysis for specific instructions of reconstitution.
Host Species	Homo sapiens
IgG type	IgG4
Reactivity	Human
Target	PD-1
Uniprot ID	Q15116
Description	Biotinylated Anti-PD-1(nivolumab biosimilar) mAb
Storage & Shipping	Store at -20°C to -80°C for 12 months in lyophilized form. After reconstitution, if not intended for use within a month, aliquot and store at -80°C (Avoid repeated freezing and thawing). Lyophilized proteins are shipped at ambient temperature.
Background	Research grade biosimilar. Not for use in therapeutic or diagnostic procedures for humans or animals.
Usage	Research use only



Biotinylated Anti-PD-1(nivolumab biosimilar) mAb ELISA

0.2 μ g of Human PD-1, mFc-His tagged protein per well

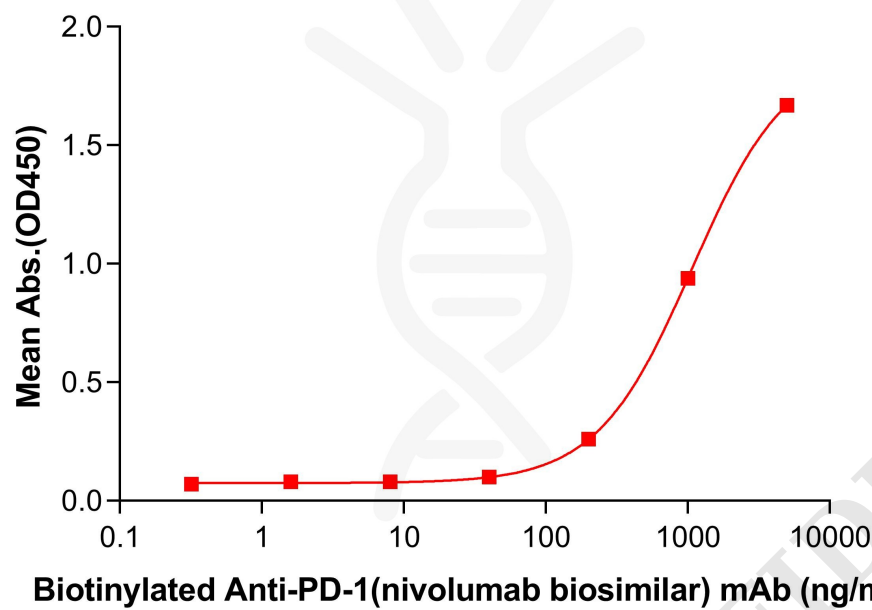


Figure 1. ELISA plate pre-coated by 2 μ g/mL (100 μ L/well) Human PD-1 Protein, mFc-His tag (PME100025) can bind Biotinylated Anti-PD-1(nivolumab biosimilar) mAb (BME100590B) in a linear range of 400-2000 ng/mL.

