

## PRODUCT INFORMATION

<b>Target</b>	IL31
<b>Synonyms</b>	Interleukin-31 □ IL-31
<b>Description</b>	Recombinant Canine IL31 protein with C-terminal 6×His Avi tag
<b>Delivery</b>	In STOCK
<b>Uniprot ID</b>	C7G0W1
<b>Expression Host</b>	HEK293
<b>Tag</b>	C-6×His Avi Tag
<b>Molecular Characterization</b>	IL31(Ser24-Gln159)+6×His tag+Avi tag
<b>Molecular Weight</b>	The protein has a predicted molecular mass of 18.3 kDa after removal of the signal peptide.
<b>Purity</b>	The purity of the protein is greater than 85% as determined by SDS-PAGE and Coomassie blue staining.
<b>Formulation &amp; Reconstitution</b>	Lyophilized from sterile PBS, pH 7.4. Normally 5 % - 8% trehalose is added as protectants before lyophilization. Please see Certificate of Analysis for specific instructions of reconstitution.
<b>Sterility</b>	Products are supplied non-sterile. For cell culture applications, dilute in appropriate medium and sterile-filter (0.22 μm) prior to use.
<b>Storage&amp;Shipping</b>	Store at -20°C to -80°C for 12 months in lyophilized form. After reconstitution, if not intended for use within a month, aliquot and store at -80°C (Avoid repeated freezing and thawing). Lyophilized proteins are shipped at ambient temperature.
<b>Background</b>	IL31, which is made principally by activated Th2-type T cells, interacts with a heterodimeric receptor consisting of IL31RA (MIM 609510) and OSMR (MIM 601743) that is constitutively expressed on epithelial cells and keratinocytes. IL31 may be involved in the promotion of allergic skin disorders and in regulating other allergic diseases, such as asthma (Dillon et al., 2004 [PubMed 15184896]).[supplied by OMIM, Mar 2008]
<b>Usage</b>	Research use only
<b>Conjugate</b>	Biotinylated



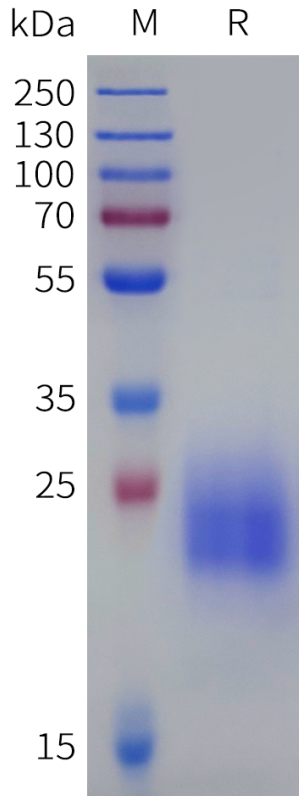


Figure 1. Biotinylated Canine IL31 Protein, His Tag on SDS-PAGE under reducing condition.

### Biotinylated Canine IL31 Protein, His Tagged Protein ELISA

0.2  $\mu\text{g}$  of Anti-Canine IL31(lokivetmab biosimilar) mAb per well

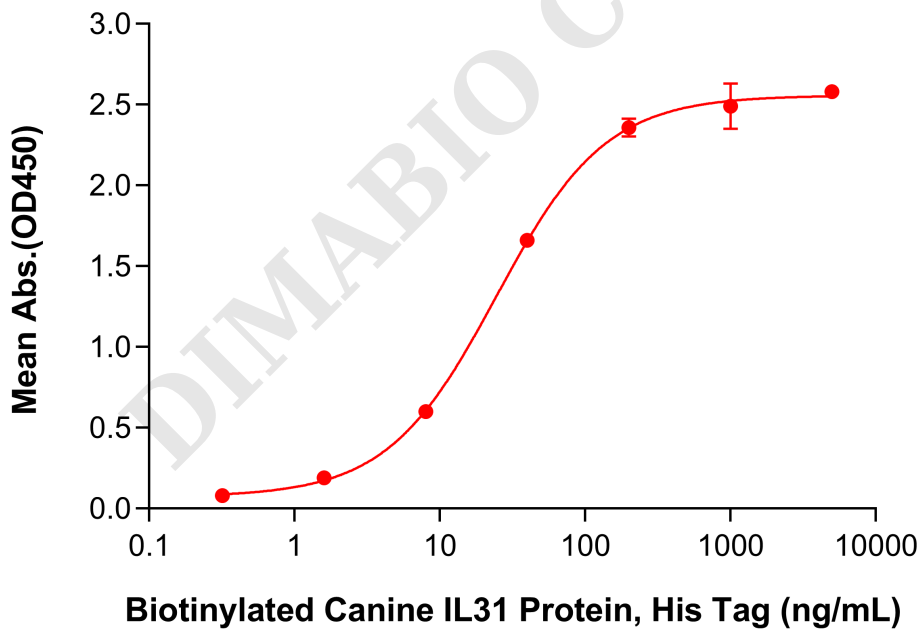


Figure 2. ELISA plate pre-coated by 2  $\mu\text{g}/\text{mL}$  (100  $\mu\text{L}/\text{well}$ ) Anti-Canine IL31(lokivetmab biosimilar) mAb (BME100268) can bind Biotinylated Canine IL31 Protein, His Tag (PME-D100004B) in a linear range of 8-40 ng/mL. In order to specifically detect PME-D100004B, HRP Conjugated-Streptavidin was used as detection antibody.

