

PRODUCT INFORMATION

Target	IL31
Synonyms	Interleukin-31 □ IL-31
Description	Recombinant Feline IL31 protein with C-terminal 6×His Avi tag
Delivery	In STOCK
Uniprot ID	XP_011286140.1
Expression Host	HEK293
Tag	C-6×His Avi Tag
Molecular Characterization	IL31(Ala27-Gln159)+6×His tag+Avi tag
Molecular Weight	The protein has a predicted molecular mass of 18.0 kDa after removal of the signal peptide.
Purity	The purity of the protein is greater than 85% as determined by SDS-PAGE and Coomassie blue staining.
Formulation & Reconstitution	Lyophilized from sterile PBS, pH 7.4. Normally 5 % - 8% trehalose is added as protectants before lyophilization. Please see Certificate of Analysis for specific instructions of reconstitution.
Sterility	Products are supplied non-sterile. For cell culture applications, dilute in appropriate medium and sterile-filter (0.22 μm) prior to use.
Storage&Shipping	Store at -20°C to -80°C for 12 months in lyophilized form. After reconstitution, if not intended for use within a month, aliquot and store at -80°C (Avoid repeated freezing and thawing). Lyophilized proteins are shipped at ambient temperature.
Background	IL31, which is made principally by activated Th2-type T cells, interacts with a heterodimeric receptor consisting of IL31RA (MIM 609510) and OSMR (MIM 601743) that is constitutively expressed on epithelial cells and keratinocytes. IL31 may be involved in the promotion of allergic skin disorders and in regulating other allergic diseases, such as asthma (Dillon et al., 2004 [PubMed 15184896]).[supplied by OMIM, Mar 2008]
Usage	Research use only
Conjugate	Biotinylated



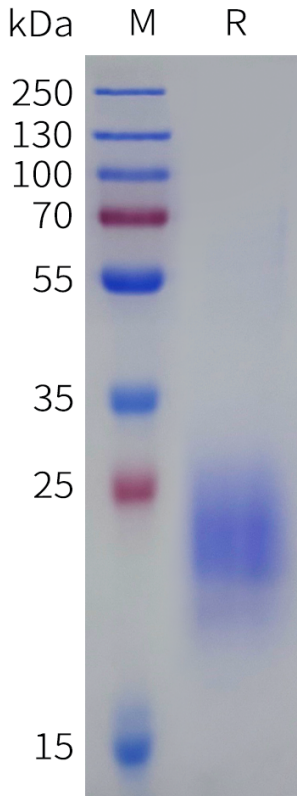


Figure 1. Biotinylated Feline IL31 Protein, His Tag on SDS-PAGE under reducing condition.

Biotinylated Feline IL31, His Tagged Protein ELISA

0.2 µg of Anti-Feline IL31(dovanvetmab biosimilar) mAb per well

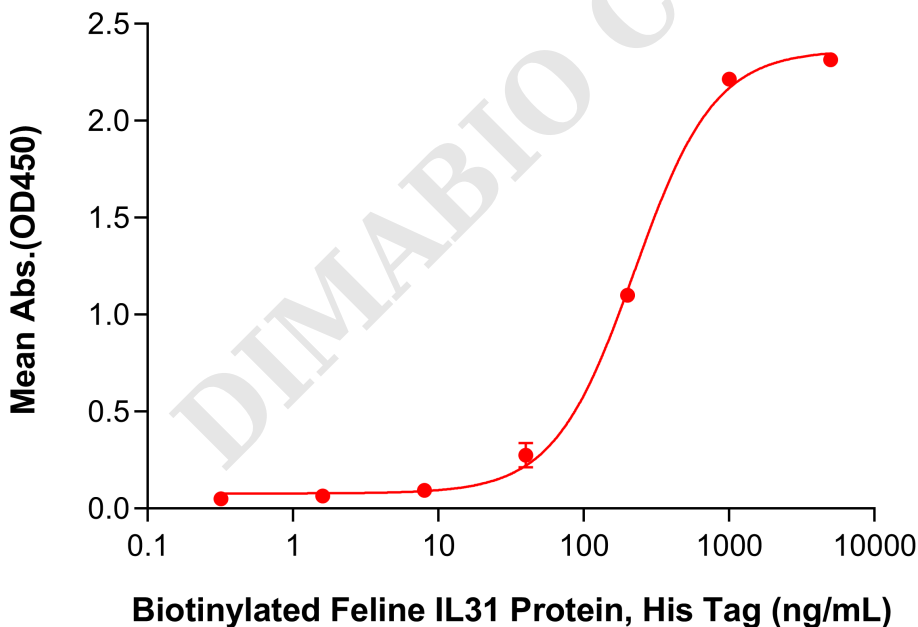


Figure 2. ELISA plate pre-coated by 2 µg/mL (100 µL/well) Anti-Feline IL31(dovanvetmab biosimilar) mAb (BME100269) can bind Biotinylated Feline IL31 Protein, His Tag (PME-F100001B) in a linear range of 200-1000 ng/mL. In order to specifically detect PME-F100001B, HRP Conjugated-Streptavidin was used as detection antibody.

