

PRODUCT INFORMATION

Tag	C-Flag&Avi Tag
Target	CCR2
Synonyms	CC-CKR-2; CCR-2; CCR2A; CCR2B; CD192; CKR2; CKR2A; CKR2B; CMKBR2; MCP-1-R
Description	Biotinylated Human CCR2 full length protein-PeptiNanodisc
Delivery	In Stock
Uniprot ID	P41597
Expression Host	HEK293
Protein Families	Druggable Genome, Transmembrane
Protein Pathways	Chemokine signaling pathway, Cytokine-cytokine receptor interaction
Molecular Weight	The human full length CCR2 protein has a MW of 41.9 kDa
Formulation & Reconstitution	Lyophilized from nanodisc solubilization buffer (20 mM Tris-HCl, 150 mM NaCl, pH 8.0). Normally 5% - 8% trehalose is added as protectants before lyophilization. Please see Certificate of Analysis for specific instructions. Do not use solvents with a pH below 6.5 or those containing high concentrations of divalent metal ions (greater than 5 mM) in subsequent experiments.
Storage&Shipping	Store at -20°C to -80°C for 12 months in lyophilized form. After reconstitution, if not intended for use within a month, aliquot and store at -80°C (Avoid repeated freezing and thawing). Lyophilized proteins are shipped at ambient temperature.
Background	The protein is a receptor for monocyte chemoattractant protein-1, a chemokine which specifically mediates monocyte chemotaxis. Monocyte chemoattractant protein-1 is involved in monocyte infiltration in inflammatory diseases such as rheumatoid arthritis as well as in the inflammatory response against tumors. The encoded protein mediates agonist-dependent calcium mobilization and inhibition of adenylyl cyclase. This protein can also be a coreceptor with CD4 for HIV-1 infection. This gene is located in the chemokine receptor gene cluster region of chromosome 3.
Usage	Research use only
Conjugate	Biotinylated



**ELISA assay to evaluate Biotinylated CCR2-PeptiNanodisc**  
0.2µg Human Biotinylated CCR2-PeptiNanodisc per well

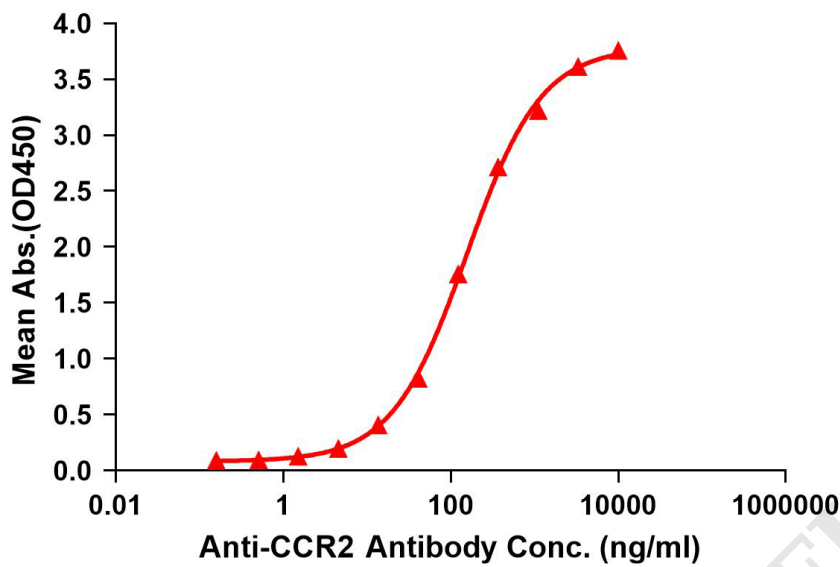


Figure 1. Elisa plates were added with C-Flag&Avi Tag Biotinylated CCR2 peptiNanodisc (0.2µg/per well) on a Streptavidin pre-coated (0.2µg/per well) plate. Serial diluted anti-CCR2 monoclonal antibody (DMC100447) solutions were added, washed, and incubated with secondary antibody before Elisa reading. From above data, the EC50 for anti-CCR2 monoclonal antibody binding with Biotinylated CCR2-PeptiNanodisc is 155.7ng/ml.

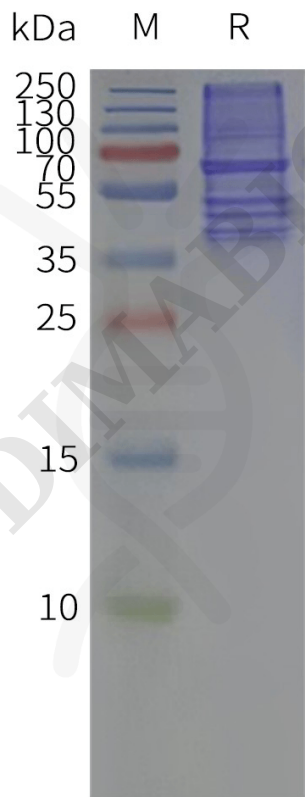


Figure 2. Biotinylated Human CCR2-PeptiNanodisc, C-Flag&Avi Tag on SDS-PAGE



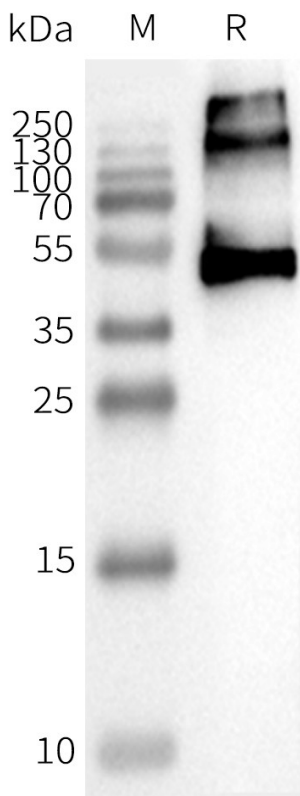


Figure 3. WB analysis of Biotinylated Human CCR2-PeptiNanodisc with anti-CCR2 monoclonal antibody (DMC100447) at 1µg/ml, followed by Goat Anti-Human IgG HRP at 1/5000 dilution

