

PRODUCT INFORMATION

Tag	C-Flag&Avi Tag
Target	CCR8
Synonyms	CC-CCR-8,CCR-8,CDw198,CKRL1,CMKBR8,CMKBRL2,CY6,GPRCY6,TER1
Description	Biotinylated Human CCR8 full length protein-PeptiNanodisc
Delivery	In Stock
Uniprot ID	P51685
Expression Host	HEK293
Protein Families	Druggable Genome, GPCR, Transmembrane
Protein Pathways	Chemokine signaling pathway,cytokine-cytokine receptor interaction
Molecular Weight	The human full length CCR8 Protein has a MW of 40.7 kDa
Formulation & Reconstitution	Lyophilized from nanodisc solubilization buffer (20 mM Tris-HCl, 150 mM NaCl, pH 8.0). Normally 5% – 8% trehalose is added as protectants before lyophilization. Please see Certificate of Analysis for specific instructions. Do not use solvents with a pH below 6.5 or those containing high concentrations of divalent metal ions (greater than 5 mM) in subsequent experiments.
Storage & Shipping	Store at -20°C to -80°C for 12 months in lyophilized form. After reconstitution, if not intended for use within a month, aliquot and store at -80°C (Avoid repeated freezing and thawing). Lyophilized proteins are shipped at ambient temperature.
Background	A member of the beta chemokine receptor family, which is predicted to be a seven transmembrane protein similar to G protein-coupled receptors. Chemokines and their receptors are important for the migration of various cell types into the inflammatory sites. This receptor protein preferentially expresses in the thymus. I-309, thymus activation-regulated cytokine (TARC) and macrophage inflammatory protein-1 beta (MIP-1 beta) have been identified as ligands of this receptor. Studies of this receptor and its ligands suggested its role in regulation of monocyte chemotaxis and thymic cell apoptosis. More specifically, this receptor may contribute to the proper positioning of activated T cells within the antigenic challenge sites and specialized areas of lymphoid tissues. This gene is located at the chemokine receptor gene cluster region.
Usage	Research use only
Conjugate	Biotinylated



**ELISA assay to evaluate Biotinylated CCR8-PeptiNanodisc**  
0.2µg Human Biotinylated CCR8-PeptiNanodisc per well

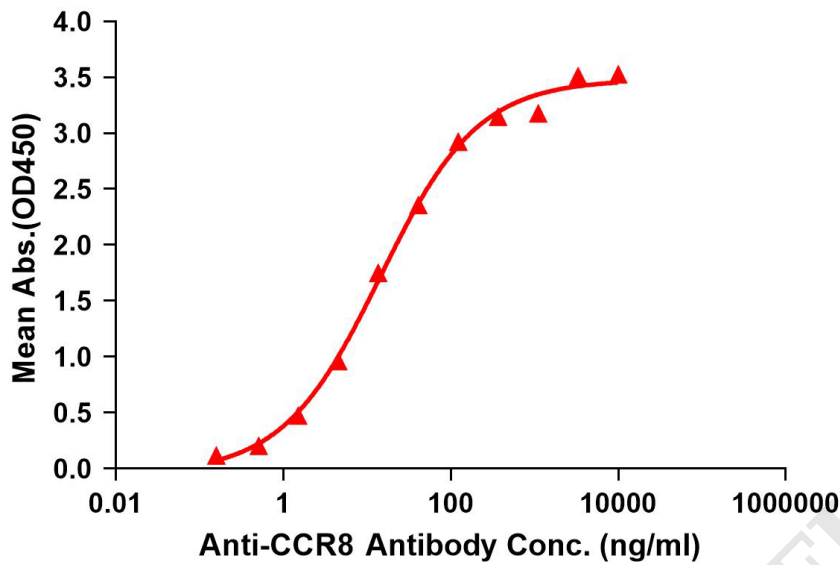


Figure 1. Elisa plates were added with C-Flag&Avi Tag Biotinylated CCR8 peptiNanodisc (0.2µg/per well) on a Streptavidin pre-coated (0.2µg/per well) plate. Serial diluted anti-CCR8 monoclonal antibody (BME100115) solutions were added, washed, and incubated with secondary antibody before Elisa reading. From above data, the EC50 for anti-CCR8 monoclonal antibody binding with Biotinylated CCR8-PeptiNanodisc is 14.48ng/ml.

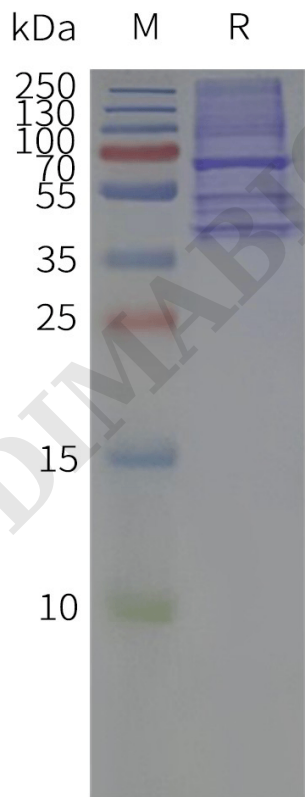


Figure 2. Biotinylated Human CCR8-PeptiNanodisc, C-Flag&Avi Tag on SDS-PAGE



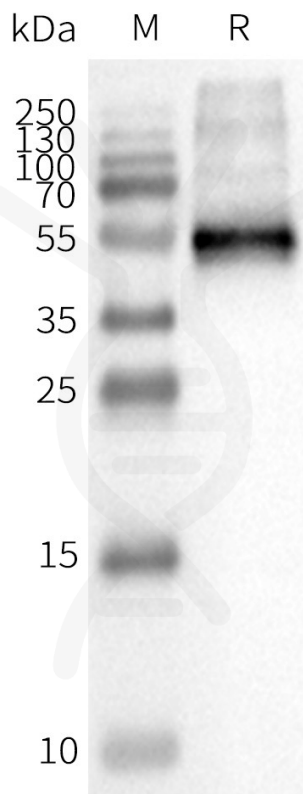


Figure 3. WB analysis of Biotinylated Human CCR8-PeptiNanodisc with anti-CCR8 monoclonal antibody (BME100115) at 1µg/ml, followed by Goat Anti-Human IgG HRP at 1/5000 dilution

