

PRODUCT INFORMATION

Target	PD-1
Synonyms	PDCD1, PD1, CD279, SLEB2
Description	Recombinant human PD-1 protein with C-terminal mouse Fc and 6×His Avi tag
Delivery	In STOCK
Uniprot ID	Q15116
Expression Host	HEK293
Tag	C-Mouse Fc and 6×His Avi tag
Molecular Characterization	PD-1(Phe24-Val170)+mFc(Pro99-Lys330)+6×His+Avi tag
Molecular Weight	The protein has a predicted molecular mass of 45.3 kDa after removal of the signal peptide.
Purity	The purity of the protein is greater than 95% as determined by SDS-PAGE and Coomassie blue staining.
Formulation & Reconstitution	Lyophilized from sterile PBS, pH 7.4. Normally 5 % - 8% trehalose is added as protectants before lyophilization. Please see Certificate of Analysis for specific instructions.
Sterility	Products are supplied non-sterile. For cell culture applications, dilute in appropriate medium and sterile-filter (0.22 µm) prior to use.
Storage&Shipping	Store at -20°C to -80°C for 12 months in lyophilized form. After reconstitution, if not intended for use within a month, aliquot and store at -80°C (Avoid repeated freezing and thawing).Lyophilized proteins are shipped at ambient temperature.
Background	This protein is expressed in pro-B-cells and is thought to play a role in their differentiation. In mice, expression of this gene is induced in the thymus when anti-CD3 antibodies are injected and large numbers of thymocytes undergo apoptosis. Mice deficient for this gene bred on a BALB/c background developed dilated cardiomyopathy and died from congestive heart failure. These studies suggest that this gene product may also be important in T cell function and contribute to the prevention of autoimmune diseases.
Usage	Research use only
Conjugate	Biotinylated



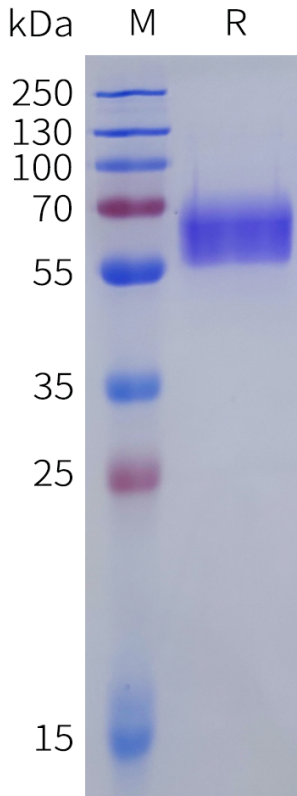


Figure 1. Biotinylated Human PD-1 Protein, mFc-His Tag on SDS-PAGE under reducing condition.

Biotinylated Human PD-1, mFc-His Tagged Protein ELISA

0.2 μ g of Anti-PD-1 (pembrolizumab biosimilar) mAb per well

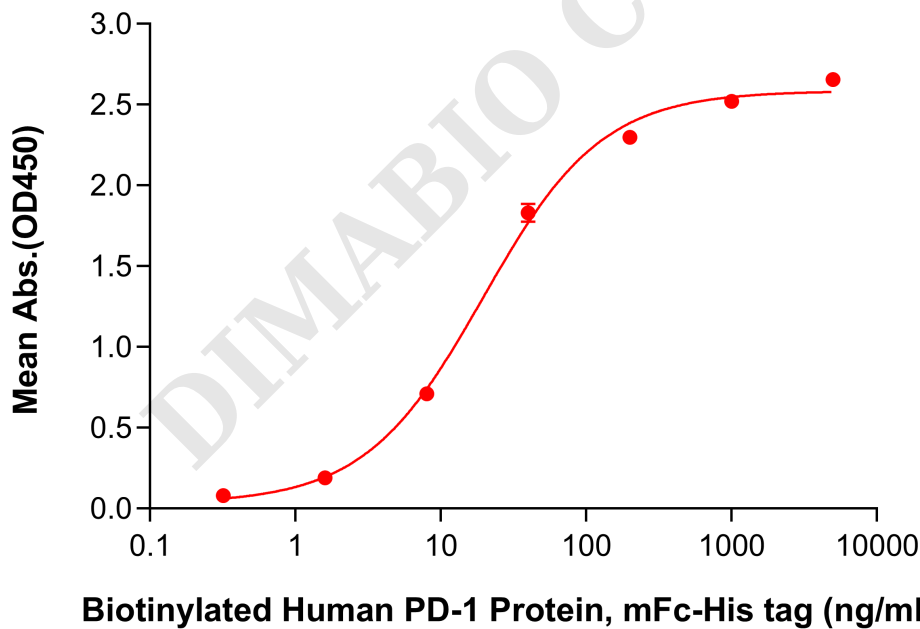


Figure 2. ELISA plate pre-coated by 2 μ g/mL (100 μ L/well) Anti-PD-1 (pembrolizumab biosimilar) mAb (BME100006) can bind Biotinylated Human PD-1 Protein, mFc-His tag (PME100025B) in a linear range of 8–40 ng/mL. In order to specifically detect PME100025B, HRP Conjugated-Streptavidin was used as detection antibody.

