

**PRODUCT INFORMATION**

<b>Target</b>	PD-L1
<b>Synonyms</b>	B7-H; B7H1; PDL1; CD274; ADMIO5; hPD-L1; PDCD1L1; PDCD1LG1
<b>Description</b>	Biotinylated Recombinant human PD-L1 Protein with C-terminal Human Fc Avi tag
<b>Delivery</b>	In Stock
<b>Uniprot ID</b>	Q9NZQ7
<b>Expression Host</b>	HEK293
<b>Tag</b>	C-Human Fc Avi tag
<b>Molecular Characterization</b>	PDL1(Phe19-Arg238) hFc(Glu99-Ala330) Avi tag
<b>Molecular Weight</b>	The protein has a predicted molecular mass of 53.1 kDa after removal of the signal peptide.
<b>Purity</b>	The purity of the protein is greater than 95% as determined by SDS-PAGE and Coomassie blue staining.
<b>Formulation &amp; Reconstitution</b>	Lyophilized from sterile PBS, pH 7.4. Normally 5% - 8% trehalose is added as protectants before lyophilization. Please see Certificate of Analysis for specific instructions of reconstitution.
<b>Storage&amp;Shipping</b>	Store at -20°C to -80°C for 12 months in lyophilized form. After reconstitution, if not intended for use within a month, aliquot and store at -80°C (Avoid repeated freezing and thawing).Lyophilized proteins are shipped at ambient temperature.
<b>Sterility</b>	Products are supplied non-sterile. For cell culture applications, dilute in appropriate medium and sterile-filter (0.22 µm) prior to use.
<b>Background</b>	This gene encodes an immune inhibitory receptor ligand that is expressed by hematopoietic and non-hematopoietic cells, such as T cells and B cells and various types of tumor cells. The encoded protein is a type I transmembrane protein that has immunoglobulin V-like and C-like domains. Interaction of this ligand with its receptor inhibits T-cell activation and cytokine production. During infection or inflammation of normal tissue, this interaction is important for preventing autoimmunity by maintaining homeostasis of the immune response. In tumor microenvironments, this interaction provides an immune escape for tumor cells through cytotoxic T-cell inactivation. Expression of this gene in tumor cells is considered to be prognostic in many types of human malignancies, including colon cancer and renal cell carcinoma. Alternative splicing results in multiple transcript variants. [provided by RefSeq, Sep 2015]
<b>Usage</b>	Research use only
<b>Conjugate</b>	Biotinylated



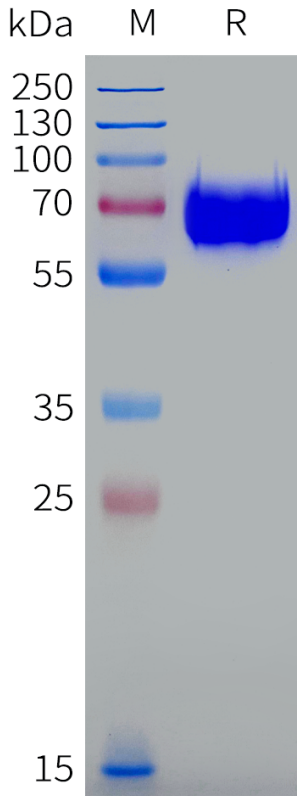


Figure 1. Biotinylated Human PD-L1 Protein, hFc Tag on SDS-PAGE under reducing condition.

### Biotinylated Human PD-L1, hFc Tagged Protein ELISA

0.2 µg of Anti-PD-L1(avelumab biosimilar) mAb per well

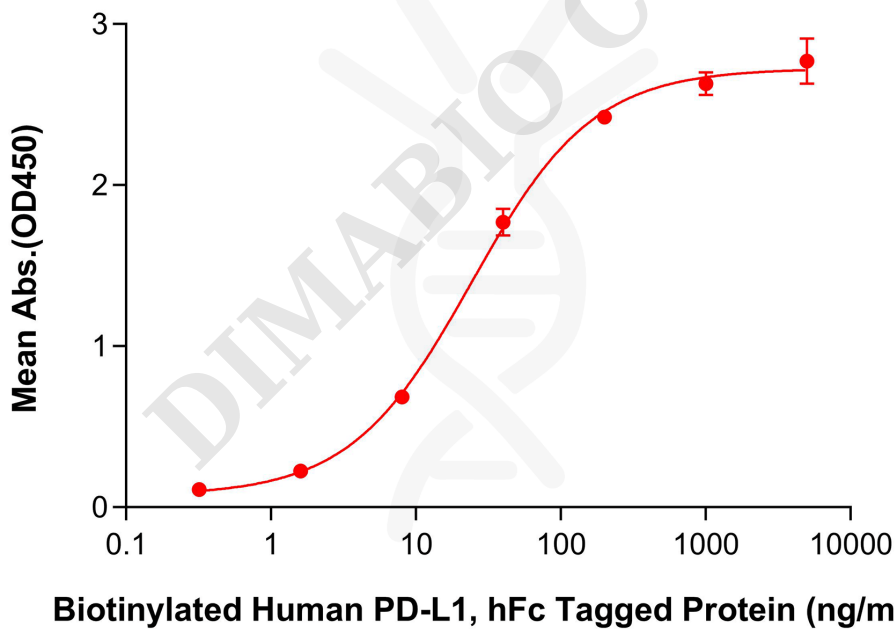


Figure 2. ELISA plate pre-coated by 2 µg/mL (100 µL/well) Anti-PD-L1(avelumab biosimilar) mAb (BME100418) can bind Biotinylated Human PD-L1 Protein, hFc Tag (PME101955B) in a linear range of 8-40 ng/mL.

