

PRODUCT INFORMATION

Target	PD-1
Synonyms	PD1; PDCD1; CD279; SLEB2; hPD-1; hPD-l; hSLE1
Description	Recombinant Canine PD-1 protein with C-terminal 10×His tag
Delivery	In Stock
Uniprot ID	NP_001301026.1
Expression Host	HEK293
Tag	C-10×His tag
Molecular Characterization	PD-1(Leu25-Gly168) 10×His tag
Molecular Weight	The protein has a predicted molecular mass of 17.5 kDa after removal of the signal peptide. The apparent molecular mass of dPD-1-His is approximately 15-35 kDa due to glycosylation.
Purity	The purity of the protein is greater than 85% as determined by SDS-PAGE and Coomassie blue staining.
Formulation & Reconstitution	Lyophilized from sterile PBS, pH 7.4. Normally 5 % - 8% trehalose is added as protectants before lyophilization. Please see Certificate of Analysis for specific instructions of reconstitution.
Storage&Shipping	Store at -20°C to -80°C for 12 months in lyophilized form. After reconstitution, if not intended for use within a month, aliquot and store at -80°C (Avoid repeated freezing and thawing). Lyophilized proteins are shipped at ambient temperature.
Background	Programmed cell death protein 1 (PDCD1) is an immune-inhibitory receptor expressed in activated T cells; it is involved in the regulation of T-cell functions, including those of effector CD8+ T cells. In addition, this protein can also promote the differentiation of CD4+ T cells into T regulatory cells. PDCD1 is expressed in many types of tumors including melanomas, and has demonstrated to play a role in anti-tumor immunity. Moreover, this protein has been shown to be involved in safeguarding against autoimmunity, however, it can also contribute to the inhibition of effective anti-tumor and anti-microbial immunity. [provided by RefSeq, Aug 2020]
Usage	Research use only
Conjugate	Unconjugated



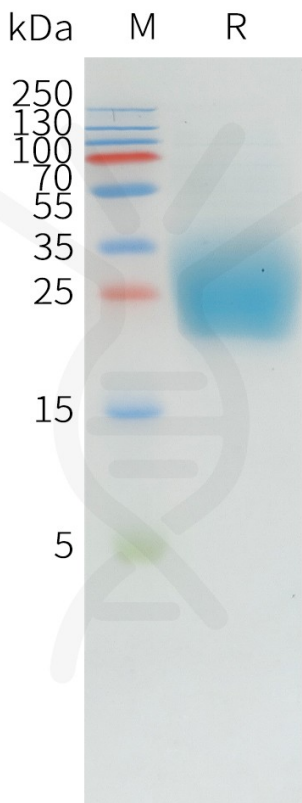


Figure 1. Canine PD-1 Protein, His Tag on SDS-PAGE under reducing condition.

**Canine PD-1, His Tagged protein ELISA**  
0.2 µg of Canine PD-1, His tagged protein per well

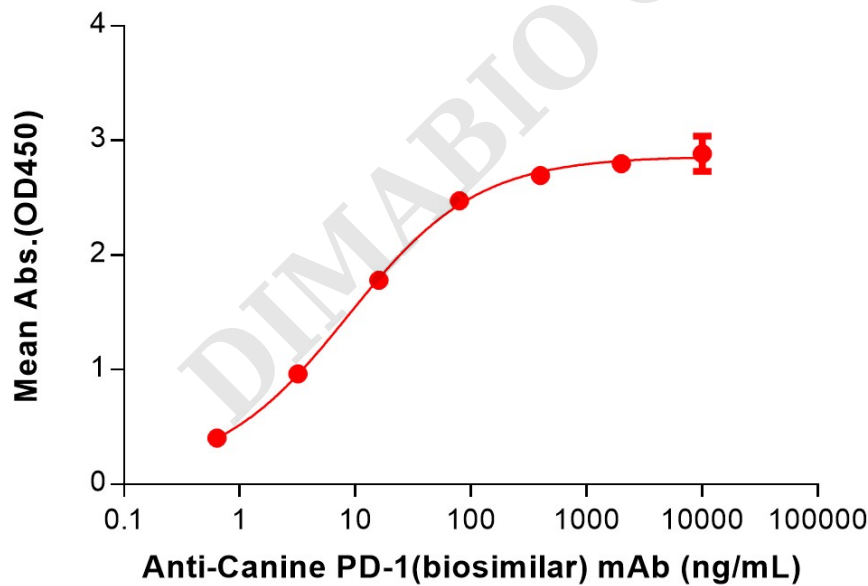


Figure 2. ELISA plate pre-coated by 2 µg/mL (100 µL/well) Canine PD-1 Protein, His Tag (PME-D100005) can bind Anti-Canine PD-1 (INTERVET 4F12) mAb (BME100202) in a linear range of 0.64-80 ng/mL.



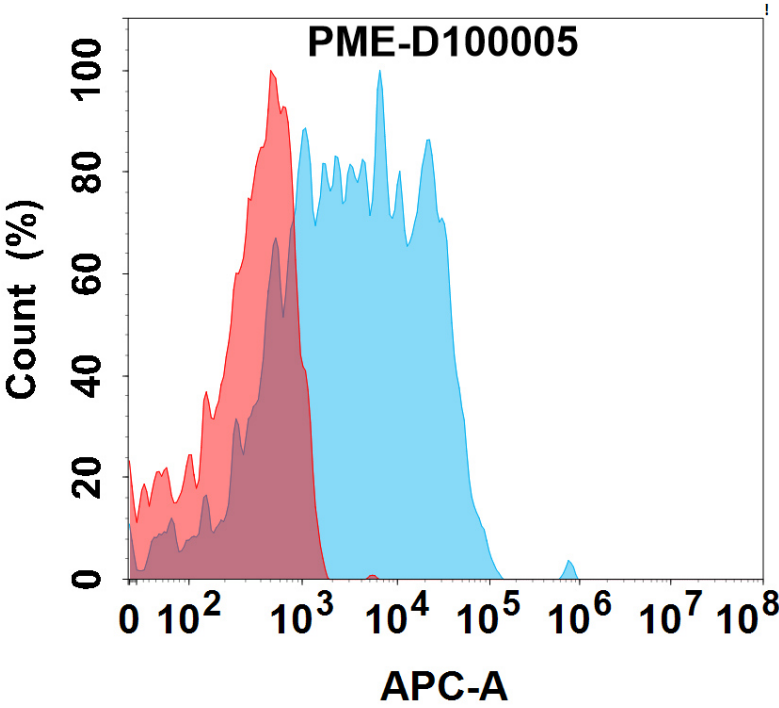


Figure 3. Flow cytometry analysis with 15µg/mL Canine PD-1 Protein, His Tag(PME-D100005) on HEK293 cells transfected with Canine PD-L1 protein (Blue histogram) or HEK293 transfected with irrelevant protein (Red histogram).

