

PRODUCT INFORMATION

Target	CCR1
Synonyms	CKR1; CD191; CKR-1; HM145; CMKBR1; MIP1aR; SCYAR1
Description	Recombinant Cynomolgus CCR1 protein with C-terminal human Fc tag
Delivery	In Stock
Uniprot ID	Q2Y2P0
Expression Host	HEK293
Tag	C-Human Fc tag
Molecular Characterization	Cynomolgus CCR1(Met1-Ala34)+hFc(Glu99-Ala330)
Molecular Weight	The protein has a predicted molecular mass of 30.0 kDa after removal of the signal peptide.
Purity	The purity of the protein is greater than 95% as determined by SDS-PAGE and Coomassie blue staining.
Formulation & Reconstitution	Lyophilized from sterile PBS, pH 7.4. Normally 5 % - 8% trehalose is added as protectants before lyophilization. Please see Certificate of Analysis for specific instructions of reconstitution.
Storage&Shipping	Store at -20°C to -80°C for 12 months in lyophilized form. After reconstitution, if not intended for use within a month, aliquot and store at -80°C (Avoid repeated freezing and thawing). Lyophilized proteins are shipped at ambient temperature.
Background	This gene encodes a member of the beta chemokine receptor family, which is predicted to be a seven transmembrane protein similar to G protein-coupled receptors. The ligands of this receptor include macrophage inflammatory protein 1 alpha (MIP-1 alpha), regulated on activation normal T expressed and secreted protein (RANTES), monocyte chemoattractant protein 3 (MCP-3), and myeloid progenitor inhibitory factor-1 (MPIF-1). Chemokines and their receptors mediated signal transduction are critical for the recruitment of effector immune cells to the site of inflammation. Knockout studies of the mouse homolog suggested the roles of this gene in host protection from inflammatory response, and susceptibility to virus and parasite. This gene and other chemokine receptor genes, including CCR2, CCRL2, CCR3, CCR5 and CCXCR1, are found to form a gene cluster on chromosome 3p. [provided by RefSeq, Jul 2008]
Usage	Research use only
Conjugate	Unconjugated



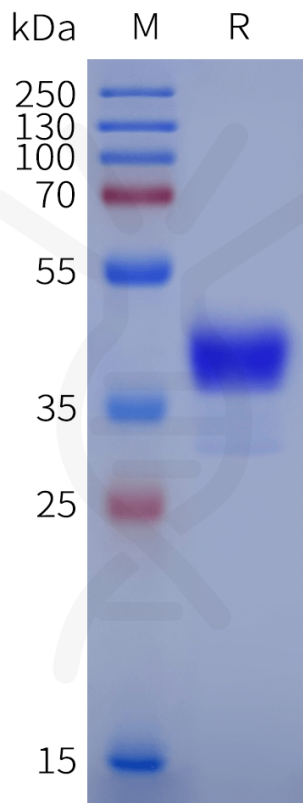
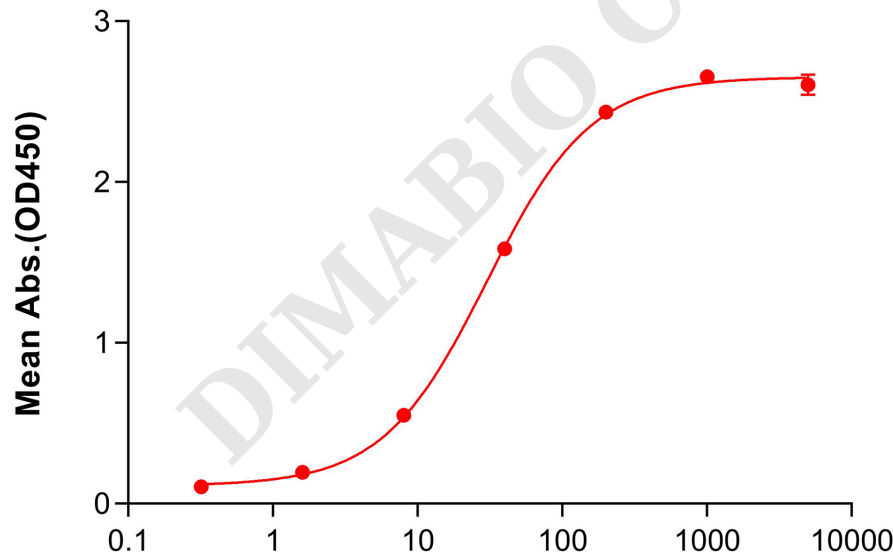


Figure 1. Cynomolgus CCR1 Protein, hFc Tag on SDS-PAGE under reducing condition.

Cynomolgus CCR1, hFc Tagged Protein ELISA

0.2 μ g of Cynomolgus CCR1, hFc tagged protein per well



Anti-CCR1 antibody(DMC465); IgG1 Chimeric mAb (ng/mL)

Figure 2. ELISA plate pre-coated by 2 μ g/mL (100 μ L/well) Cynomolgus CCR1 Protein, hFc Tag (PME-C100096) can bind Anti-CCR1 antibody(DMC465); IgG1 Chimeric mAb(DMC100465) in a linear range of 8-40ng/mL.

