

PRODUCT INFORMATION

Target	CDH17
Synonyms	HPT1; CDH16; HPT-1
Description	Recombinant Cynomolgus CDH17 protein with C-terminal 10×His tag
Delivery	In Stock
Uniprot ID	A0A2K5X8I8
Expression Host	HEK293
Tag	C-10×His tag
Molecular Characterization	CDH17(Lys30-Thr792) 10×His tag
Molecular Weight	The protein has a predicted molecular mass of 86.0 kDa after removal of the signal peptide.
Purity	The purity of the protein is greater than 85% as determined by SDS-PAGE and Coomassie blue staining.
Formulation & Reconstitution	Lyophilized from sterile PBS, pH 7.4. Normally 5 % - 8% trehalose is added as protectants before lyophilization. Please see Certificate of Analysis for specific instructions.
Storage & Shipping	Store at -20°C to -80°C for 12 months in lyophilized form. After reconstitution, if not intended for use within a month, aliquot and store at -80°C (Avoid repeated freezing and thawing). Lyophilized proteins are shipped at ambient temperature.
Background	This gene is a member of the cadherin superfamily, genes encoding calcium-dependent, membrane-associated glycoproteins. The encoded protein is cadherin-like, consisting of an extracellular region, containing 7 cadherin domains, and a transmembrane region but lacking the conserved cytoplasmic domain. The protein is a component of the gastrointestinal tract and pancreatic ducts, acting as an intestinal proton-dependent peptide transporter in the first step in oral absorption of many medically important peptide-based drugs. The protein may also play a role in the morphological organization of liver and intestine. Alternative splicing results in multiple transcript variants. [provided by RefSeq, Jan 2009]
Usage	Research use only
Conjugate	Unconjugated



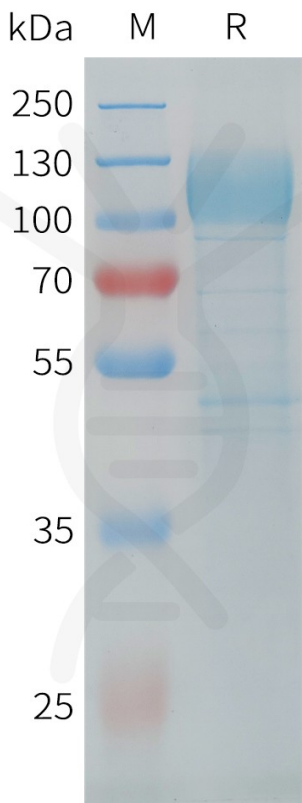


Figure 1. Cynomolgus CDH17 Protein, His Tag on SDS-PAGE under reducing condition.

Cynomolgus CDH17, His Tagged protein ELISA
0.05 µg of Cynomolgus CDH17, His tagged protein per well

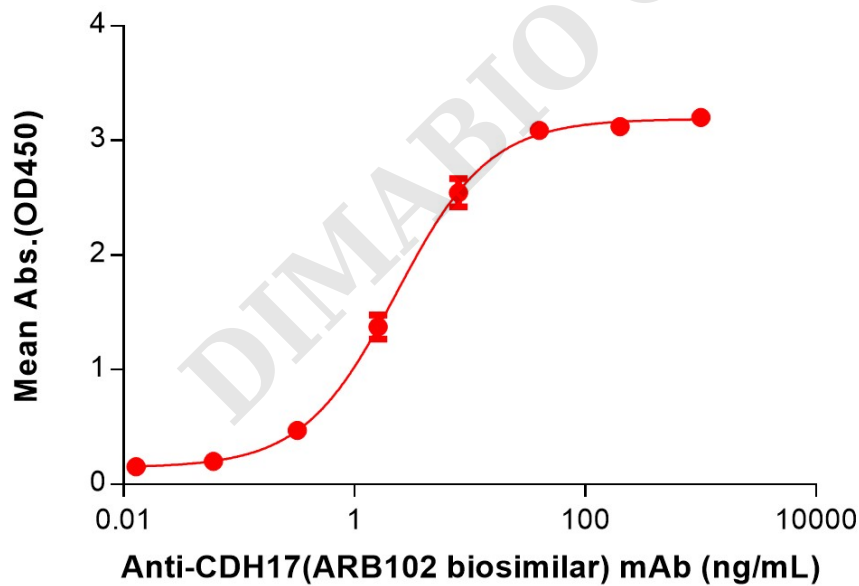


Figure 2. ELISA plate pre-coated by 2 µg/mL (100 µL/well) Cynomolgus CDH17 Protein, His Tag (PME-C100029) can bind Anti-CDH17(ARB102 biosimilar) mAb (BME100198) in a linear range of 3.20-40 ng/mL.



Cynomolgus CDH17, His Tagged protein ELISA

0.05 μ g of Cynomolgus CDH17, His tagged protein per well

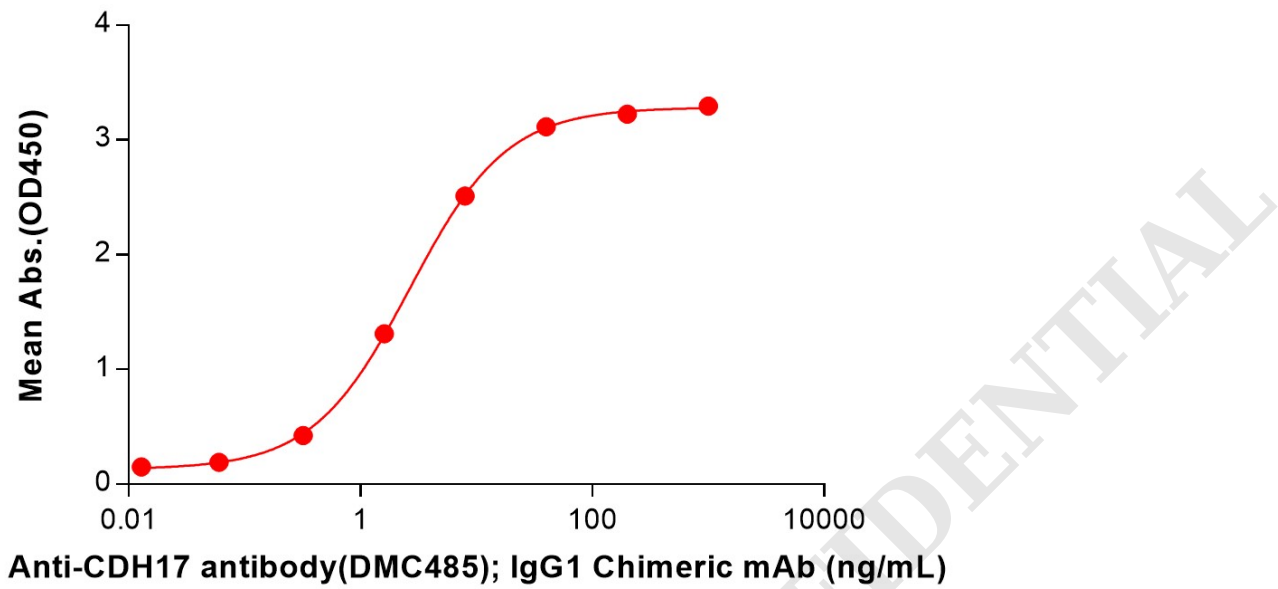


Figure 3. ELISA plate pre-coated by 2 μ g/mL (100 μ L/well) Cynomolgus CDH17 Protein, His Tag (PME-C100029) can bind Anti-CDH17 antibody(DMC485); IgG1 Chimeric mAb (DMC100485) in a linear range of 3.20-40 ng/mL.

