

PRODUCT INFORMATION

Target	CLEC4C
Synonyms	BDCA-2;BDCA2;CD303;CLECSF7;CLECSF11;DLEC;HECL;PRO34150
Description	Recombinant Cynomolgus CLEC4C protein with N-terminal 6×His tag
Delivery	In Stock
Uniprot ID	A0A2K5UWP4
Expression Host	HEK293
Tag	N-6×His Tag
Molecular Characterization	6×His tag CLEC4C(Tyr48-Ile212)
Molecular Weight	The protein has a predicted molecular mass of 20.3 kDa after removal of the signal peptide. The apparent molecular mass of His-cCLEC4C is approximately 15-25 kDa due to glycosylation.
Purity	The purity of the protein is greater than 85% as determined by SDS-PAGE and Coomassie blue staining.
Formulation & Reconstitution	Lyophilized from sterile PBS, pH 7.4. Normally 5 % - 8% trehalose is added as protectants before lyophilization. Please see Certificate of Analysis for specific instructions of reconstitution.
Storage & Shipping	Store at -20°C to -80°C for 12 months in lyophilized form. After reconstitution, if not intended for use within a month, aliquot and store at -80°C (Avoid repeated freezing and thawing). Lyophilized proteins are shipped at ambient temperature.
Background	This gene encodes a member of the C-type lectin/C-type lectin-like domain (CTL/CTLD) superfamily. Members of this family share a common protein fold and have diverse functions, such as cell adhesion, cell-cell signalling, glycoprotein turnover, and roles in inflammation and immune response. The encoded type 2 transmembrane protein may play a role in dendritic cell function. Two transcript variants encoding distinct isoforms have been identified for this gene. [provided by RefSeq, Jul 2008]
Usage	Research use only
Conjugate	Unconjugated



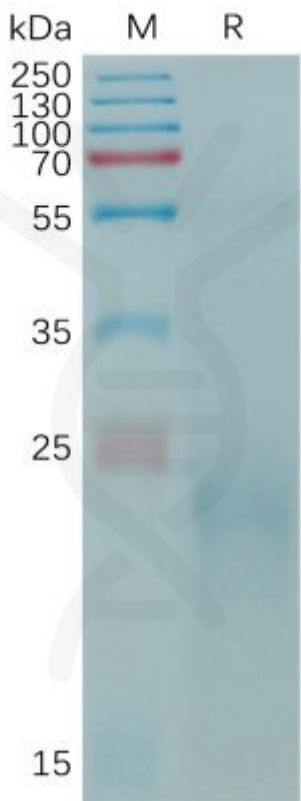


Figure 1. Cynomolgus CLEC4C Protein, His Tag on SDS-PAGE under reducing condition.

