

## PRODUCT INFORMATION

<b>Target</b>	GPC3
<b>Synonyms</b>	SGB; DGSX; MXR7; SDYS; SGBS; OCI-5; SGBS1; GTR2-2
<b>Description</b>	Recombinant Cynomolgus GPC3(24-552) protein with C-terminal 10×His tag
<b>Delivery</b>	In Stock
<b>Uniprot ID</b>	A0A2K5VK50
<b>Expression Host</b>	HEK293
<b>Tag</b>	C-10×His tag
<b>Molecular Characterization</b>	GPC3(Gln24-His552) 10×His tag
<b>Molecular Weight</b>	The protein has a predicted molecular mass of 61.6 kDa after removal of the signal peptide.
<b>Purity</b>	The purity of the protein is greater than 80% as determined by SDS-PAGE and Coomassie blue staining.
<b>Formulation &amp; Reconstitution</b>	Lyophilized from sterile PBS, pH 7.4. Normally 5 % - 8% trehalose is added as protectants before lyophilization. Please see Certificate of Analysis for specific instructions of reconstitution.
<b>Storage&amp;Shipping</b>	Store at -20°C to -80°C for 12 months in lyophilized form. After reconstitution, if not intended for use within a month, aliquot and store at -80°C (Avoid repeated freezing and thawing). Lyophilized proteins are shipped at ambient temperature.
<b>Sterility</b>	Products are supplied non-sterile. For cell culture applications, dilute in appropriate medium and sterile-filter (0.22 µm) prior to use.
<b>Background</b>	Cell surface heparan sulfate proteoglycans are composed of a membrane-associated protein core substituted with a variable number of heparan sulfate chains. Members of the glypican-related integral membrane proteoglycan family (GRIPs) contain a core protein anchored to the cytoplasmic membrane via a glycosyl phosphatidylinositol linkage. These proteins may play a role in the control of cell division and growth regulation. The protein encoded by this gene can bind to and inhibit the dipeptidyl peptidase activity of CD26, and it can induce apoptosis in certain cell types. Deletion mutations in this gene are associated with Simpson-Golabi-Behmel syndrome, also known as Simpson dysmorphia syndrome. Alternative splicing results in multiple transcript variants. [provided by RefSeq, Sep 2009]
<b>Usage</b>	Research use only
<b>Conjugate</b>	Unconjugated



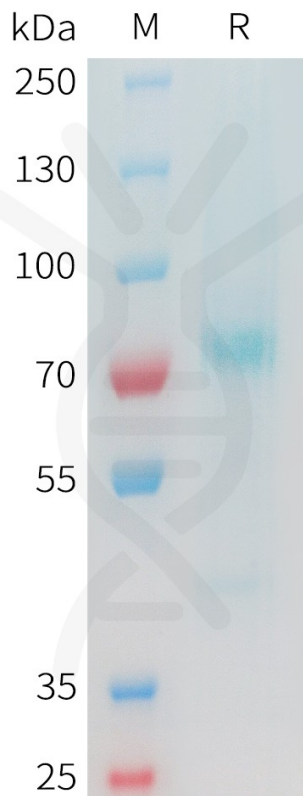


Figure 1. Cynomolgus GPC3(24-552) Protein, His Tag on SDS-PAGE under reducing condition.

