

PRODUCT INFORMATION

Target	KLRG1
Synonyms	2F1; MAFA; MAFA-L; CLEC15A; MAFA-2F1; MAFA-LIKE
Description	Recombinant Cynomolgus KLRG1 protein with N-terminal human Fc tag
Delivery	In Stock
Uniprot ID	A0A2K5WAP9
Expression Host	HEK293
Tag	N-Human Fc tag
Molecular Characterization	hFc(Glu99-Ala330)+Cynomolgus KLRG1(Leu60-Pro189)
Molecular Weight	The protein has a predicted molecular mass of 41.0 kDa after removal of the signal peptide.
Purity	The purity of the protein is greater than 95% as determined by SDS-PAGE and Coomassie blue staining.
Formulation & Reconstitution	Lyophilized from sterile PBS, pH 7.4. Normally 5 % - 8% trehalose is added as protectants before lyophilization. Please see Certificate of Analysis for specific instructions of reconstitution.
Storage & Shipping	Store at -20°C to -80°C for 12 months in lyophilized form. After reconstitution, if not intended for use within a month, aliquot and store at -80°C (Avoid repeated freezing and thawing). Lyophilized proteins are shipped at ambient temperature.
Background	Natural killer (NK) cells are lymphocytes that can mediate lysis of certain tumor cells and virus-infected cells without previous activation. They can also regulate specific humoral and cell-mediated immunity. The protein encoded by this gene belongs to the killer cell lectin-like receptor (KLR) family, which is a group of transmembrane proteins preferentially expressed in NK cells. Studies in mice suggested that the expression of this gene may be regulated by MHC class I molecules. [provided by RefSeq, Jun 2016]
Usage	Research use only
Conjugate	Unconjugated



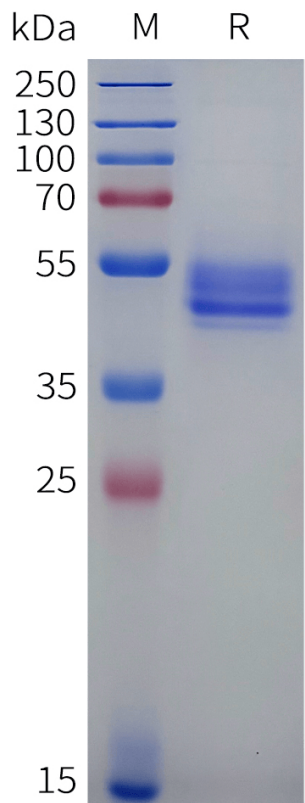


Figure 1. Cynomolgus KLRG1 Protein, hFc Tag on SDS-PAGE under reducing condition.

