

**PRODUCT INFORMATION**

|   |   |
|---|---|
| <b>Target</b>                           | TIM3  |
| <b>Synonyms</b>                         | HAVCR2; CD366; KIM-3; SPTCL; TIMD3; Tim-3; TIMD-3; HAVcr-2  |
| <b>Description</b>                      | Recombinant Cynomolgus TIM3 protein with C-terminal human Fc tag  |
| <b>Delivery</b>                         | In Stock  |
| <b>Uniprot ID</b>                       | A0A2K5U3G7  |
| <b>Expression Host</b>                  | HEK293  |
| <b>Tag</b>                              | C-Human Fc tag  |
| <b>Molecular Characterization</b>       | TIM3(Ser22-Thr194) hFc(Glu99-Ala330)  |
| <b>Molecular Weight</b>                 | The protein has a predicted molecular mass of 45.0 kDa after removal of the signal peptide.   |
| <b>Purity</b>                           | The purity of the protein is greater than 95% as determined by SDS-PAGE and Coomassie blue staining.  |
| <b>Formulation &amp; Reconstitution</b> | Lyophilized from sterile PBS, pH 7.4. Normally 5 % - 8% trehalose is added as protectants before lyophilization. Please see Certificate of Analysis for specific instructions of reconstitution.  |
| <b>Storage&amp;Shipping</b>             | Store at -20°C to -80°C for 12 months in lyophilized form. After reconstitution, if not intended for use within a month, aliquot and store at -80°C (Avoid repeated freezing and thawing). Lyophilized proteins are shipped at ambient temperature.   |
| <b>Sterility</b>                        | Products are supplied non-sterile. For cell culture applications, dilute in appropriate medium and sterile-filter (0.22 µm) prior to use.   |
| <b>Background</b>                       | The protein encoded by this gene belongs to the immunoglobulin superfamily, and TIM family of proteins. CD4-positive T helper lymphocytes can be divided into types 1 (Th1) and 2 (Th2) on the basis of their cytokine secretion patterns. Th1 cells are involved in cell-mediated immunity to intracellular pathogens and delayed-type hypersensitivity reactions, whereas, Th2 cells are involved in the control of extracellular helminthic infections and the promotion of atopic and allergic diseases. This protein is a Th1-specific cell surface protein that regulates macrophage activation, and inhibits Th1-mediated auto- and alloimmune responses, and promotes immunological tolerance. [provided by RefSeq, Sep 2011] |
| <b>Usage</b>                            | Research use only   |
| <b>Conjugate</b>                        | Unconjugated  |



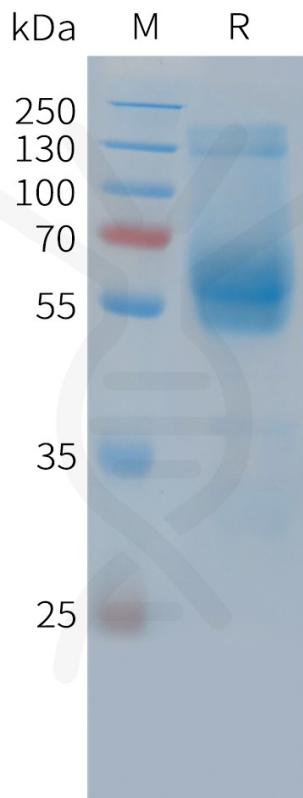


Figure 1. Cynomolgus TIM3 Protein, hFc Tag on SDS-PAGE under reducing condition.

DIMABIO CONFIDENTIAL

