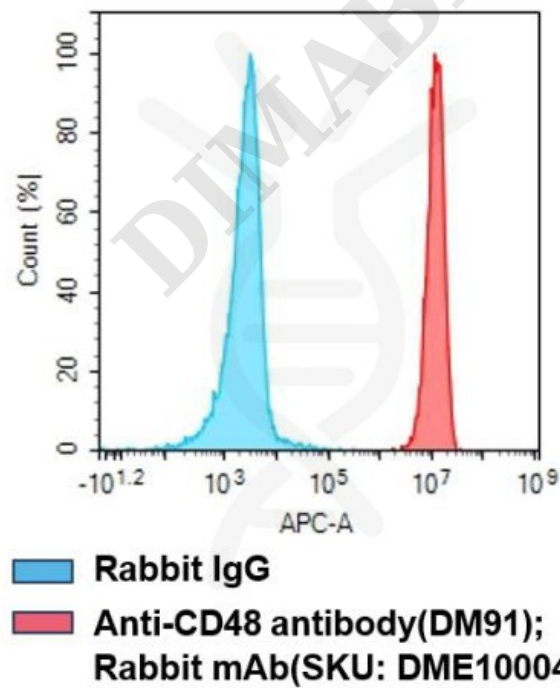


PRODUCT INFORMATION

Target	CD48
Description	Monoclonal Cell Line Derived from K562 Cells, Engineered for Stable Expression of Human CD48 Using Lentiviral Technology
Host Cells	K562
Uniprot ID	P09326
Applications	FACS Data
Growth media	RPMI-1640+10% FBS+1% P.S+2 ug/mL Puromycin
Package	5E6 Cells/mL
Host Species	Human
Suggested Control	SKU: DME100043
Warranty and Disclaimer	1. Please inspect cells upon receipt and report any issues promptly. 2. We offer one-time replacements for issues reported within a week of receipt. 3. User-induced issues are not eligible for free replacements. 4. We do not accept liability for damages resulting from cell use, storage, or loss. 5. Feedback received more than one month after receipt will not be processed.
Storage&Shipping	Cells are shipped using dry ice and require liquid nitrogen storage for long term preservation.
Synonyms	CD48;BCM1;SLAMF2;BLAST;BLAST1;MEM-102;TCT.1;BCM-1;SLAMF-2;BLAST-1
Background	This gene encodes a member of the CD2 subfamily of immunoglobulin-like receptors which includes SLAM (signaling lymphocyte activation molecules) proteins. The encoded protein is found on the surface of lymphocytes and other immune cells, dendritic cells and endothelial cells, and participates in activation and differentiation pathways in these cells. The encoded protein does not have a transmembrane domain, however, but is held at the cell surface by a GPI anchor via a C-terminal domain which maybe cleaved to yield a soluble form of the receptor. Multiple transcript variants encoding different isoforms have been found for this gene.
Usage	For research use only.

Hu_CD48 K562 Cell Line



Hu_CD48 K562 Cell Line

Cat. No. CEL100006



Anti-CD48 antibody(DM44) rabbit mAb (Cat. No. DME100043)

DIMABIO CONFIDENTIAL

Address: Wuhan institute of
Biotechnology B7, Biolake No.666
Gaoxin Road, Wuhan, Hubei, China
Telephone: +1 2409940618(USA)
/+86-18062749453(China)
/+86-400-006-0995(China)

Email: info@dimabio.com
Website: www.dimabio.com

